

10-2011

Librarians on the Move: Embedded Librarians

Linda Masselink

Grand Valley State University, masselil@gvsu.edu

Anne Merkle MSL

Grand Valley State University, merklea@gvsu.edu

Rita Kohrman

Grand Valley State University, kohrmanr@gvsu.edu

Follow this and additional works at: http://scholarworks.gvsu.edu/library_presentations



Part of the [Library and Information Science Commons](#)

Recommended Citation

Masselink, Linda; Merkle, Anne MSL; and Kohrman, Rita, "Librarians on the Move: Embedded Librarians" (2011). *Presentations*. 17.
http://scholarworks.gvsu.edu/library_presentations/17

This Article is brought to you for free and open access by the University Libraries at ScholarWorks@GVSU. It has been accepted for inclusion in Presentations by an authorized administrator of ScholarWorks@GVSU. For more information, please contact scholarworks@gvsu.edu.

Librarians on the Move: Embedded Librarians

Linda Masselink, Anne Merkle, Rita Kohrman

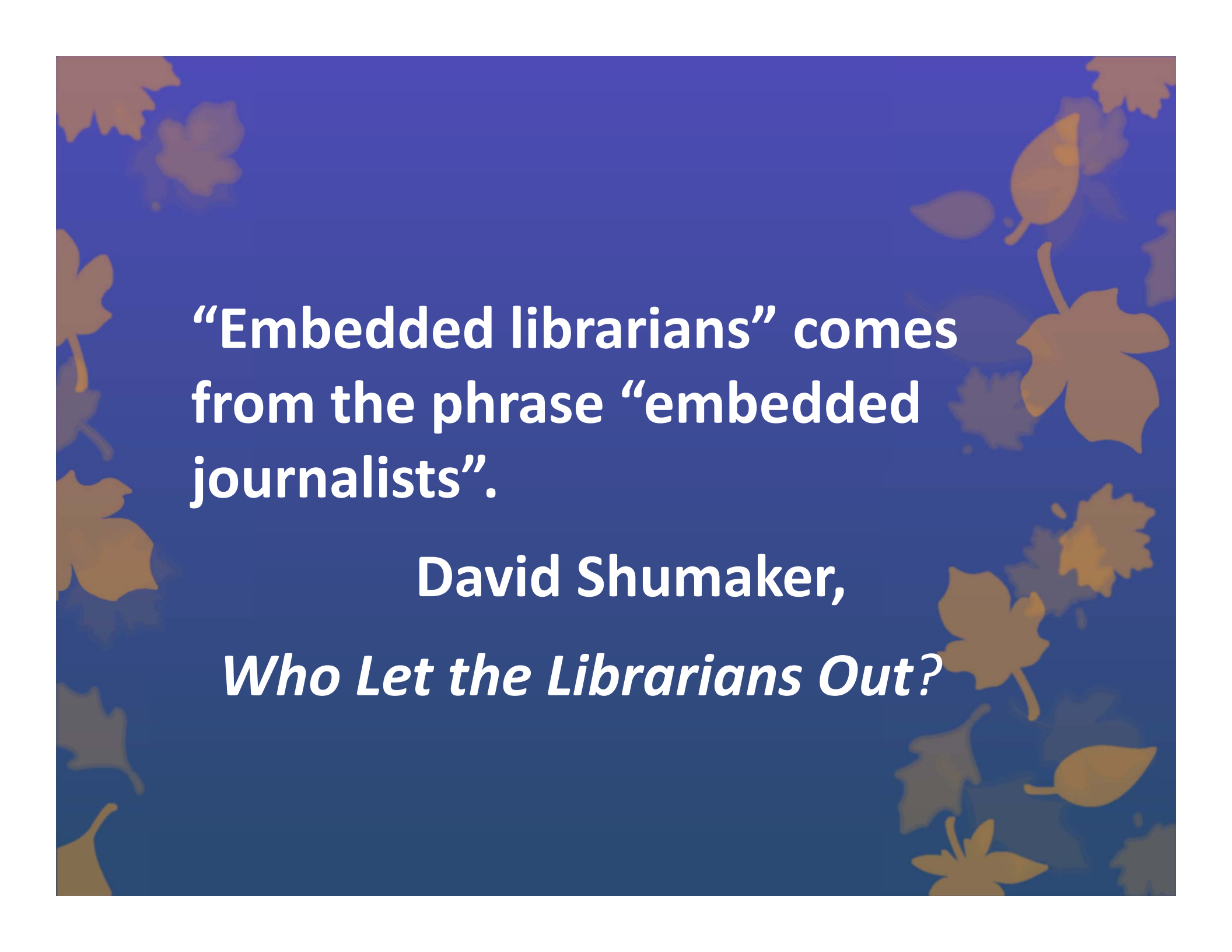
Grand Valley State University Libraries

Michigan Library Association Annual Conference

October 26, 2011



GRAND VALLEY
STATE UNIVERSITY
UNIVERSITY LIBRARIES



“Embedded librarians” comes from the phrase “embedded journalists”.

David Shumaker,

Who Let the Librarians Out?

A word cloud of various terms related to library services and education. The words are arranged in a roughly rectangular shape, with some overlapping. The colors range from dark blue to light cyan. The terms include: research rescue, roving office, library guides, course management system, virtual, f2f, virtual office, iPhone app, research partner, online discussion, community events, programmatic-based, project-based, webinars, outreach, co-teaching, classroom, and information literacy integration.

research rescue

roving office

library guides

course management system

virtual

f2f

virtual office

iPhone app

research partner

online discussion

community events

programmatic-based

project-based

webinars

outreach

co-teaching

classroom

information literacy integration

How do we define it?

Providing library expertise
outside the library

How did we start?

- BlackBoard
- Videos online with Off-Campus Library Services
- A Dark and Stormy Night*

* Madeleine L'Engle and Snoopy

The background is a solid blue color with a pattern of brown, stylized leaves scattered across it. The leaves vary in shape and size, some resembling maple leaves and others more like simple ovals. The text is centered in the middle of the page.

Networking and Supporting

Lights! Camera! Action!

- [Telepresence](#)
- [How to be a Super Searcher](#)
- Slideshare.net/gvsulib

Real Life For Students, Faculty & Librarians

Allendale

21.21
Miles

15.40
Miles

Holland

**Grand
Rapids**

28.60
Miles

Why do we need embedded librarians?

- Develop better relationships
- Build better connections with students
- Increase visibility to faculty and students

and...

Send a Message

- Highlight impact/value of librarians
- Promote library services
- Promote library resources
- Deliver customized service

and....

Students

- Increase student comfort level
- Contribute to the mission of higher education /college experience

Best Practices for Getting Started

- Get support from administration; departments, other librarians
- Meet with Department Chairs
- Investigate best times for service

Publicize, Publicize, Publicize

- Contact faculty
- Provide your contact information
- Locate an area
- Essential: strong wireless signal

Best Practices for Success

- Introduce yourself
- Encourage faculty to direct students to you
- Try an online presence
- Be consistent
- Keep statistics
- Don't be discouraged

Impact/Challenges

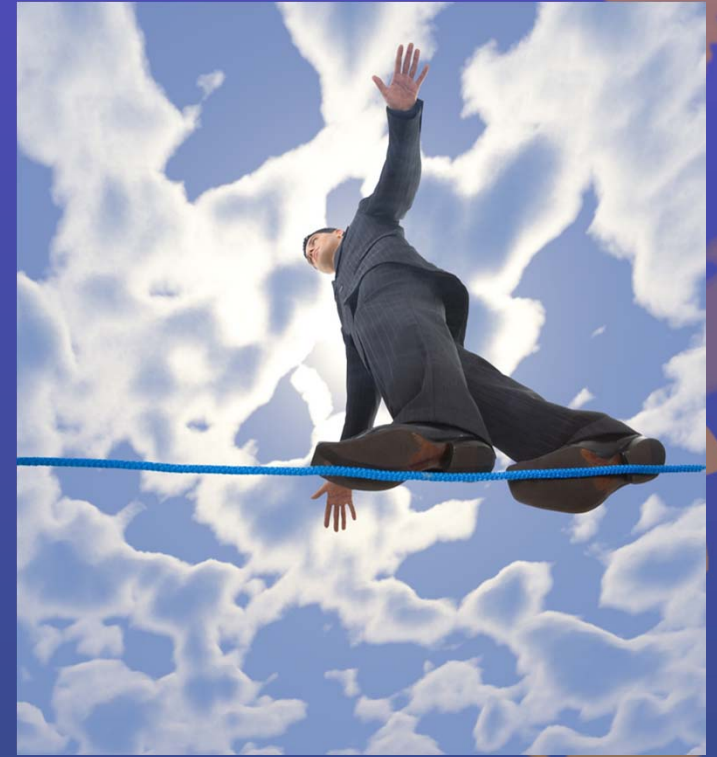
- Workload considerations
- Inconvenience
- Reporting/Assessment
- Accounting of time
- Conflict of loyalty
- Commitment to a service model

Resources that helped us


- Bartnik, L. et al (2010). We will be assimilated: Five experiences in embedded librarianship.
- Kvenlid, C., & Calkins, K. (Eds.). (2011). *Embedded librarians: Moving beyond one-shot instruction*.
- Strothmann, M., & Antgell, K. (2010). The live-in librarian: Developing library outreach to university residence halls.

[Annotated Bibliography](#)

Take the risk!



**Step outside your
comfort zone!**

- 
- Linda Masselink, Liaison Librarian for Seidman College of Business
masselil@gvsu.edu
 - Anne Merkle, Liaison Librarian for Sociology, Honors and the Juvenile Collection
merklea@gvsu.edu
 - Rita Kohrman, Liaison Librarian for the College of Education
kohrmanr@gvsu.edu