

12-2006

## Bachelors Degree or Higher, Grand Rapids, MI 2000

Community Research Institute-Johnson Center

Follow this and additional works at: <https://scholarworks.gvsu.edu/jcpmaps>



Part of the [Demography, Population, and Ecology Commons](#)

---

### ScholarWorks Citation

Community Research Institute-Johnson Center, "Bachelors Degree or Higher, Grand Rapids, MI 2000" (2006). *Community Maps*. 122.

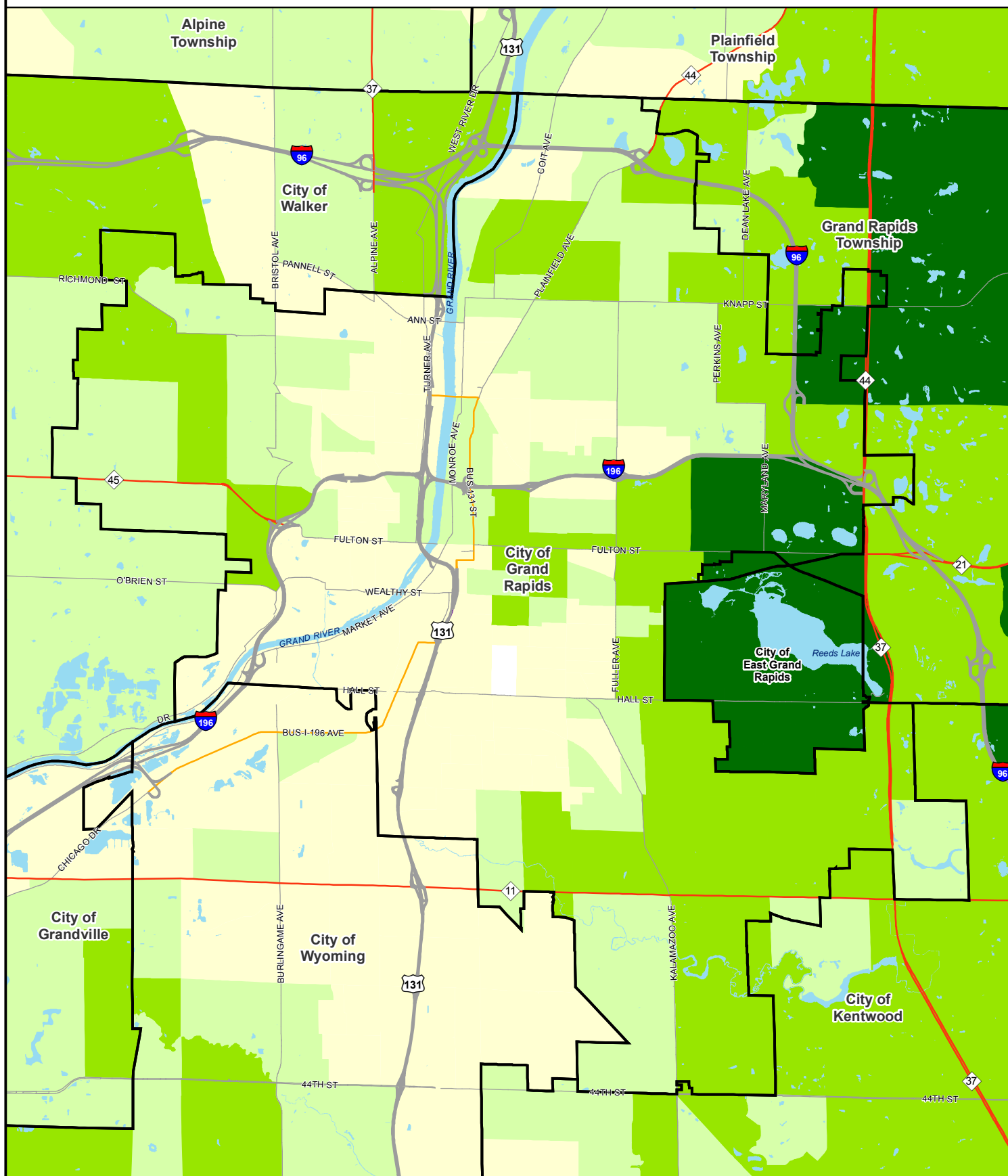
<https://scholarworks.gvsu.edu/jcpmaps/122>

This Article is brought to you for free and open access by the Dorothy A. Johnson Center for Philanthropy at ScholarWorks@GVSU. It has been accepted for inclusion in Community Maps by an authorized administrator of ScholarWorks@GVSU. For more information, please contact [scholarworks@gvsu.edu](mailto:scholarworks@gvsu.edu).

# Bachelors Degree or Higher in 2000

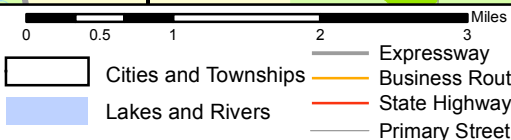
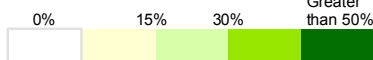
Universe: Persons 25 years and older

Geography: Census Block Groups, Grand Rapids, MI.



## Percent with a Bachelors Degree or Higher

Kent County:  
25.8%  
Michigan:  
21.8%



**Community Research Institute**  
Dorothy A. Johnson Center for Philanthropy  
and Nonprofit Leadership  
Grand Valley State University  
Date: December, 2008  
Prepared by: Joseph Severson  
Projection: Michigan South- NAD 83 Intl. feet  
Sources: 2000 U.S. Census Bureau Table: SF3 P37  
REGIS