

1-16-2012

Grand Valley Forum, volume 036, number 18, January 16, 2012

Grand Valley State University

Follow this and additional works at: <https://scholarworks.gvsu.edu/forum36>



Part of the [Archival Science Commons](#), [Education Commons](#), and the [History Commons](#)

Recommended Citation

Grand Valley State University, "Grand Valley Forum, volume 036, number 18, January 16, 2012" (2012).
2011-2012, Volume 36. 18.

<https://scholarworks.gvsu.edu/forum36/18>

This News Article is brought to you for free and open access by the Grand Valley Forum, 1976-2019 at ScholarWorks@GVSU. It has been accepted for inclusion in 2011-2012, Volume 36 by an authorized administrator of ScholarWorks@GVSU. For more information, please contact scholarworks@gvsu.edu.

FORUM

A NEWSLETTER FOR THE GRAND VALLEY STATE UNIVERSITY COMMUNITY

Published by News & Information Services



Aging population plays role in area health care forecast

Grand Valley released its third edition of "Health Check: Analyzing Trends in West Michigan." The report, supported by a grant from Blue Cross Blue Shield of Michigan and Blue Care Network, identifies significant health-related issues facing Kent, Ottawa, Muskegon and Allegan counties.

Paul Isely, professor and chair of economics, said demographics is one of the biggest stories coming out of the report. "The aging population is one reason why we're seeing increases in obesity, which is leading to increases in diabetes and asthma," said Isely. "The health care needs of the baby boom generation will change dramatically."

Isely said caring for the large number of people with asthma and diabetes totals about \$800 million, more than the compensation costs of the entire furniture industry in West Michigan.

Hari Singh, professor of economics, said the report shows a significant increase in the number of individuals in the 45-64 and the over 65 age groups, and a drop in the number of individuals in the 18-34 age group in West

Michigan. Singh said if the trend continues, the community will face a substantial burden of chronic health problems and, as a result, an increase in health care expenditures.

"The good news is we can change some of the bad trends by modifying our behavior," said Singh. "For example, exercising would reduce obesity, which would bring down health care costs. Another focus is low birth weight babies. These babies tend to have a lifetime of health issues. Better prenatal care would reduce health care costs significantly."

Other challenges include a continued nursing shortage. The report shows that each year in West Michigan, 900 fewer nurses are being trained than needed. On the positive side, the report shows that cancer rates, strokes, heart disease and smoking are all down.

The report provides an ongoing trend analysis



Paul Isely, professor and chair of economics, leads the audience through the third area Health Check, which analyzes health care trends in West Michigan.

Photo by Adam Bird

of three major issues: Knowledge Foundations, Health Care Trends, and Economic Analysis. Jean Nagelkerk, vice provost for health, said, "Our goal is to help the community use this data for strategic planning that will enable us to take actions which address the most pressing health care problems in the region."

Across Campus

Seidman College maintains prestigious accreditation

The Seidman College of Business has maintained both its business and accounting accreditation by AACSB International, the Association to Advance Collegiate Schools of Business.

To maintain accreditation, a business program must undergo a rigorous internal review every five years, during which the program must demonstrate its continued commitment to 21 quality standards relating to faculty qualification, strategic management of resources and interactions of faculty and students.

Only 643 schools of business, or less than 5 percent worldwide, have earned this distinction in management education. Only 177 institutions worldwide have achieved accreditation for

both business and accounting programs.

"Receiving accreditation from the prestigious AACSB is a testimony to our exemplary faculty, superior students, and outstanding business centers that serve both the local and broader communities," said Dean H. James Williams. "We take great pride in having become a leader in business and accounting education in this region."

The achievement will be recognized at the 2012 AACSB International Conference and Annual Meeting in San Diego, California, on April 29.

Faculty member's play gets national attention

An adaptation of the documentary play "Rust," by Austin Bunn, assistant professor of writing, was published in the January 8 issue of the *New York Times Magazine*.

Bunn collaborated with the Iowa-based

Working Group Theatre to develop the play, which focuses on the General Motors metal-stamping plant in Wyoming.

The plant closed in 2008, putting 1,500 people out of work. He spent two years recording conversations with factory workers —

some who had been at the plant for 30 years, as well as historians, area bartenders and others to help develop the play. "Rust" premiered at the Actors' Theatre of Grand Rapids in September and was well received. Working Group Theatre is planning to tour the show later this year.



Austin Bunn

continues on page 2

Across Campus

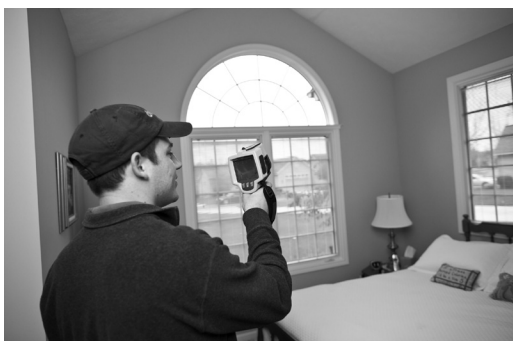
continued from page 1

“We’re hoping that this gives the play a chance to reach new audiences and speak to communities across the country,” said Bunn. “In a way, the *New York Times Magazine* publication is bittersweet. I learned Friday that one of GM workers I had interviewed and who was instrumental in my education about the life and work of the plant, had died.

“He had cancer, and his struggle to go back to work was one the most vivid interviews I did. I’m not sure he liked me, but I think the publication of this article would have made him feel like he hadn’t wasted his time speaking to me.”

Partnership provides home energy assessments for faculty, staff

Faculty and staff members can save money and conserve energy in their homes by participating in a unique partnership with the City of Grand Rapids.



Faculty and staff members can save money on home energy audits through a partnership with the City of Grand Rapids.

Funded by a grant from the American Recovery and Reinvestment Act, the BetterBuildings for Michigan initiative provides a home

energy assessment and other services, incentives and upgrades that improve home energy performance and lower utility bills.

The normal cost of a home energy assessment can range from \$300-500, said Selma Tucker, contract administrator and regional coordinator for BetterBuildings for Michigan in Grand Rapids. Faculty and staff members can participate for \$100. During an assessment, a qualified contractor will uncover where and how much energy a home is wasting, install energy-saving measures such as efficient light bulbs, pipe wrap and

new thermostats, and provide a customized report with recommendations for improvement.

Faculty and staff members living in Grand Rapids will benefit from incentives that include access to no-interest APR home energy loans, utility rebates from energy companies and 20 percent off any improvements made through the program.

Faculty and staff members living outside of Grand Rapids will receive utility rebates and low-interest financing options to make home improvements. The offer will begin January 18 and continue through the winter semester. Faculty and staff members can sign up online at www.bbmgr.org or at information tables on the Pew Grand Rapids and Allendale campuses:

• DeVos Center

January 18-20, 11 a.m.-1 p.m., University Club Room; January 24-February 28, every Tuesday and Thursday from 10 a.m.-2 p.m.

• Kirkhof Center

January 23, 11 a.m.-1 p.m., room 1104; January 24, 11 a.m.-1 p.m., room 2266; January 25, 10:30 a.m.-12:30 p.m., room 2270

“Participating in this program is a no brainer,” said Bart Bartels, project manager for Grand Valley’s Sustainable Community Development Initiative. “We hope this special offer will encourage faculty and staff members to learn more about conserving energy in their homes.”

Survey results reflect alcohol, drug use on campus

The results of a campus-wide alcohol and other drug use survey show the majority of Grand Valley students are aware of alcohol and drug policies on campus.

More than 4,000 Grand Valley students were selected at random to receive an email invitation to participate in a campus-wide alcohol

continues on page 3

FORUM Volume 36, Number 18

The GVSU Forum is published by the News and Information Services Office. The submission deadline is Tuesday noon. Send publication items to Michele Coffill, editor, c/o_forum@gvsu.edu. Telephone: 616-331-2221. Fax: 616-331-2250. Web: www.gvsu.edu/forum.

Faculty and staff members can find an online “Sketches” submission form on the Web at www.gvsu.edu/forum.

News and Information Services Staff:

Mary Eileen Lyon, assistant vice president
Sherry Bouwman, NIS assistant
Dottie Barnes, communications specialist
Michele Coffill, associate director of publications
Nate Hoekstra, communications specialist
Mary Isca Pirkola, communications specialist
Leah Zuber, communications specialist
Bernadine Carey Tucker, photography manager
Elizabeth Lienau, photography coordinator
Amanda Pitts, photographer
Jessica Hines, student writer
Dale Johnson, student writer

Other publications by the News and Information Services Office include:

Grand Valley Magazine, which is published quarterly for the university community. Visit its website at www.gvsu.edu/gvmagazine.

Visit Grand Valley’s online publication, GVN^{ow}, at www.gvsu.edu/gvnow, for daily news updates and video features.

Grand Valley State University is an affirmative action/equal opportunity institution.

GVFaces

Krystal Olson, Office Coordinator, Division of Inclusion and Equity

Krystal Olson began working at Grand Valley while she was a student majoring in education.

While she may never teach in a classroom, Olson said she’s enjoying learning on-the-job in her position for the Division of Inclusion and Equity. Her primary duties are to provide clerical support for Dwight Hamilton, assistant vice president for Affirmative Action, and Sean Huddleston, director of Intercultural Training.

“When I saw this position open, I knew it would be a great fit for me,” Olson said. “I like what this division strives to do: to make everyone on campus feel welcome.”

Olson helps coordinate Huddleston’s intercultural training workshops and is currently helping him create online tutorials. She also works closely with Hamilton, although it’s sometimes a logistical problem as Olson works in Student Services and Hamilton’s office is in Zumberge Library.

Prior to starting her position in September,

Olson had worked for the Charter Schools Office, a job she began as a student worker.

Olson graduated from Grand Valley in April with a bachelor’s degree in secondary education. Although she grew up in Allegan, Olson said while she was in high school, she wasn’t very familiar with Grand Valley.

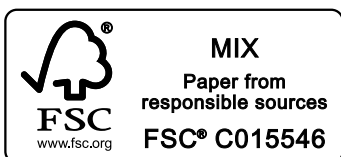
Olson said all it took was a campus visit to Grand Valley and she was sold.

“I just fell in love with the campus,” she said. “I’ve learned so much more about Grand Valley than when I was student.”

Olson enjoys exercising and spending time with family and friends. She and her fiancé, who also graduated from Grand Valley, are busy planning for their wedding in May.



Krystal Olson



What's Ahead



'Coal Mine, 1928,' watercolor by Thomas Hart Benton, is among the works featured in an exhibit about WPA art.

Depression Era art featured in two exhibitions

In a collaborative endeavor between Grand Valley and the Muskegon Museum of Art, the GVSU Art Gallery will host an historic exhibition of works created to provide encouragement and economic relief to citizens of the U. S. who were suffering through the Great Depression.

"Regionalism and the Art of the WPA: Selections from the Muskegon Museum of Art," will open Monday, January 16, at the GVSU Art Gallery, 1121 Performing Arts Center. An opening reception will be held on Thursday, January 19 from 5-7 p.m. The exhibition will be on view through March 23. Both the reception and exhibition are open to the public and free.

This exhibition of more than 40 works drawn from the MMA's collection is in conjunction with "1934: A New Deal for Artists," organized and circulated by the Smithsonian American Art Museum in Washington, D.C., and scheduled in Muskegon for February 16-May 6. Grand Valley is a co-sponsor of that exhibit.

The Regionalist art movement reflects a distinct period in U.S. history when, through the New Deal/Works Progress Administration, the federal government understood how essential art was to sustaining America's spirit, and supported the efforts by artists to define a uniquely American style.

In conjunction with the exhibit, a series of interdisciplinary programs are planned at the Art Gallery, Grand Valley's Hauenstein Center for Presidential Studies and at the Muskegon Museum of Art. For a complete

schedule and more exhibition information, call the GVSU Art Gallery at x12563 or visit www.gvsu.edu/artgallery.

Among the events are a series of films and discussions in the Art Gallery:

- January 26, 6 p.m.: "Artists at Work: A Film on the New Deal Art Projects," produced by Mary Lance; and "The Crash of 1929," produced by Ellen Houve and Muffie Meyer;
- February 2, 6 p.m.: "Hoover Dam," written, produced and directed by Stephen Stept;
- March 1, 6 p.m.: "Civilian Conservation Corps," written, produced and directed by Robert Stone.

'Healthy Mondays' begins today

Health and Wellness begins its "Healthy Mondays" campaign January 16 with presentations from noon-3 p.m. and 6-9 p.m. on multiple campuses each Monday through the winter semester.

Participants can complete a challenge, health screening or attend a presentation and have an opportunity to win prizes. Sign up for updates, fitness and nutrition tips by sending an email to healthandwellness@gvsu.edu.

This program is in conjunction with a national campaign created by Johns Hopkins University in which nonprofit organizations use Mondays to prompt participants to create and sustain healthy behaviors.

Study abroad fair set

The Padnos International Center will host a Study Abroad Fair Wednesday, January 18, from 10 a.m.-4 p.m. in the Henry Hall atrium.

Students can learn about study abroad programs prior to the February 1 application deadline for summer, fall and academic year programs. More information is online at www.gvsu.edu/studyabroad, or call PIC at x13898.

Lunch lectures focus on African diaspora

Sponsored by Area Studies, African Diaspora Conversations will begin next week and continue through the winter semester.

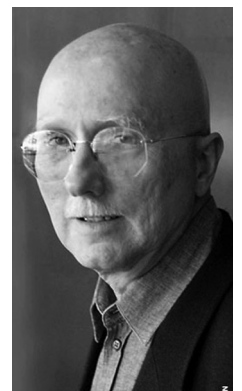
Steeve Buckridge, director of Area Studies, will give a presentation, "Black Skin, White Mask? Race, Class and the Politics of Dress in 19th Century Jamaican Society," on Monday, January 23, noon, in the Kirkhof Center, rooms 2215/2216. Participants are encouraged to bring their lunches; light refreshments will be provided.

The remaining ADC lunch lectures are listed online at www.gvsu.edu/aaas. For more information, contact Area Studies at x18110.

Nobel Peace Prize recipient to speak at SSD

The co-recipient of a Nobel Peace Prize for his work on global warming and climate change will be the keynote speaker for Student Scholars Day in April.

Henry Pollack, who shared the 2007 Nobel Peace Prize with former vice president Al Gore and the Intergovernmental Panel on Climate Change, will speak at the 17th annual Student Scholars Day dinner on April 11 in the Kirkhof Center.



Henry Pollack

Pollack serves as a senior advisor to Gore's Climate Project. He has worked as a professor of geophysics at the University of Michigan for more than 40 years.

His latest book, *A World Without Ice*, focuses on the role ice plays in the development of Earth's landscape, climate and human civilization, and the reciprocal impact of people on the planet's ice. He is also the author of *Uncertain Science . . . Uncertain World*.

Student Scholars Day, sponsored by the Office of Undergraduate Research and Scholarship, will celebrate its 17th year. More than 600 students are expected to showcase their scholarship through poster presentations, panel discussions and presentations, fine arts exhibits and performances. For more information about SSD, visit www.gvsu.edu/ssd.

Registration for students to present on SSD will be available online beginning January 30.

Across Campus

continued from page 2

and other drug use survey last February.

Eric Klingensmith, coordinator of the Alcohol Campus Education and Services office, said the results will be used to plan future services for the campus community.

Grand Valley's results were compared to results from a reference group of more than 74,000 students from 169 institutions who completed the same survey. "We're right on par with others," said Klingensmith. "The amount of alcohol consumed by

students on a monthly and yearly basis is about the same as the national average."

Klingensmith said 85.5 percent of survey participants said they prefer not to have drugs available at social events or parties and 28.6 percent said they would prefer not to have alcohol available.

The survey, created by the Core Institute at Southern Illinois University, was administered by ACES, an outreach program of the Counseling & Career Development Center. ACES will administer the survey again during the winter semester to a

random sample to further examine trends.

Survey results are detailed below.

- 11.9 percent reported using marijuana in the last 30 days, compared to the reference group of 17.3 percent;
- 72.7 percent reported having consumed alcohol in the last 30 days, compared to the reference group of 71.7 percent;
- 88.6 percent of Grand Valley participants know the campus has drug and alcohol policies.

CALENDAR OF EVENTS

Art Gallery

Jan. 16-March 23

Gallery Hours: "Regionalism and the Art of the WPA," Art Gallery, PAC. Call x12563 for more information.

General Events

Mon., Jan. 16

9 a.m.: MLK Celebration Week Breakfasts. Loosemore, DEV, and GRR KC. Visit www.gvsu.edu/mlk for more information.

Noon: MLK Celebration Week Silent March, assembles at JHZ.

Noon-2 p.m.: Health and Wellness hosts Mindful Meditation. 436 CHS. Call x12215 for more information.

12:30 p.m.: MLK Celebration Week Event: Bakari Kitwana, author of "Hip Hop Activism in the Obama Era." 2250 KC. Visit www.gvsu.edu/mlk for more information.

Tues., Jan. 17

11 a.m.: FTLC Workshop: "Preparing a Pew FTLC Grant Proposal." 1104 KC. Call x13498 for more information.

Noon: Health and Wellness hosts "Making Change Happen," by Kim Monaghan. 303C DEV. Visit www.gvsu.edu/seminar to register.

1 p.m.: MLK Celebration Week Event: "Race, Migration and Social Justice: What Would

MLK Say Today," by Melanie Shell-Weiss. 2204 KC. Visit www.gvsu.edu/mlk for more information.

Wed., Jan. 18

7:45 a.m.: Health and Wellness hosts "Meijer Cooking Demo: How to Build a Better Breakfast," by Shari Steinbach. 2266 KC. Visit www.gvsu.edu/seminar to register.

9 a.m.: Excellence Series: "Respect in the Global Workplace," by Sean Huddleston. 2270 KC. Visit www.gvsu.edu/seminar to register.

10 a.m.-4 p.m.: Padnos International Center hosts Study Abroad Fair. HRY. Call x13898 for more information.

Noon: Allendale Toastmasters. 2259 KC. Visit www.gvsu.edu/toastmasters for more information.

Noon: Health and Wellness hosts "Making Change Happen," by Kim Monaghan. 2204 KC. Visit www.gvsu.edu/seminar to register.

Noon: Health and Wellness hosts "Meijer Cooking Demo: How to Build a Better Breakfast." CHS. Visit www.gvsu.edu/seminar to register.

5 p.m.: MLK Celebration Week Event: Michelle Alexander, author of "The New Jim Crow." 2250 KC. Simulcast to Loosemore, DEV. Visit www.gvsu.edu/mlk for more information.

8 p.m.: Guest Artist Series: Christopher Creviston, saxophone, and Oren Fader, electric guitar. 1325 PAC. Call x13484 for more information.

Thurs., Jan. 19

7:30 a.m.: Downtown Toastmasters. University Club Room, DEV. Visit www.gvsu.edu/toastmasters for information.

10 a.m.: MLK Celebration Week Event: Michelle Alexander, author of "The New Jim Crow." CDC. Visit www.gvsu.edu/mlk for more information.

5 p.m.: Opening Reception for "Regionalism and the Art of the WPA." Art Gallery, PAC. Call x12563 for more information.

8 p.m.: Guest Artists Series: Robert Peavler, baritone, Alissa Deeter, soprano, and Arlene Shrut, piano. 1325 PAC. Call x13484 for more information.

Fri., Jan. 20

2 p.m.: Office of Multicultural Affairs hosts CinemAwareness: "Daisy Bates: First Lady of Little Rock." 1240 KC. Call x12177 for more information.

Sat., Jan. 21

9 p.m.: MLK Celebration Week Event: Day of Service. 2204 KC. Visit www.gvsu.edu/mlk for more information.

Sports

Fri., Jan. 20

3 p.m.: Indoor Track and Field hosts Mike Lints Open.

Faculty and Staff Sketches

Sketches

A performance by the **New Music Ensemble**, "Inuksuit," in New York City, was named one of the top 10 classical music events of 2011 by *New York Magazine*.

Bopaiah Biddanda, associate professor of Water Resources, gave a presentation, "Exploring Submerged Sinkholes in Lake Huron and Finding Ancient Life," at the Michigan Space Grants Consortium in Ann Arbor. He gave a presentation, "Earth's Eye: Observatory for Ecosystem Changes in Muskegon Lake," at NOAA's Great Lakes Environmental Research Laboratory.

Alan Steinman, director of the Annis Water Resources Institute, was elected to the Nature Conservancy's Michigan Board of Trustees.

Ranelle Brew, assistant professor of allied health sciences, wrote an article, "Health

Literacy — A Clinical Approach," published in the *Michigan Medical Assistant Journal*.

Patrick Fuliang Shan, associate professor of history, wrote an article, "Becoming Loyal: General Xu Shiyu and Maoist Regimentation," published in the *American Journal of Chinese Studies*.

John Stevenson, associate dean of graduate studies, wrote an article, "Do Student Physical Therapists Learn and Practice Safe Patient Handling in Entry-level Physical Therapy Education Programs?" published in the *American Journal of Safe Patient Handling and Movement*.

Peter Anderson, associate professor of Classics, was profiled in the American Philological Association's highlights of 2011, which included his interview as the recipient of the 2010 Collegiate Teaching Award.

John Kilbourne, professor of movement science, wrote an article, "WE the New PE," published in *Pelinks4U*.

Biology faculty members **Michael P. Lombardo** and **Patrick A. Thorpe** co-wrote an article, "Innate Immune Response Development in Nestling Tree Swallows," published in the *Wilson Journal of Ornithology*.

Kim Walton, MAREC program director, was elected as a member of the Board of Directors for the Michigan Great Lakes Renewable Energy Association.

Kingshuk Majumdar, associate professor of physics, received a grant from Extreme Science and Engineering Discovery Environment for a project, "Quantum Phases of Frustrated Magnetic Spin Systems." He also wrote an article, "Exotic Physics of Frustrated Magnets," published in *Desktop Engineering*.