

2-19-1996

Grand Valley Forum, volume 020, number 28, February 19, 1996

Grand Valley State University

Follow this and additional works at: <https://scholarworks.gvsu.edu/forum20>



Part of the [Archival Science Commons](#), [Education Commons](#), and the [History Commons](#)

Recommended Citation

Grand Valley State University, "Grand Valley Forum, volume 020, number 28, February 19, 1996" (1996).
1995-1996, Volume 20. 28.

<https://scholarworks.gvsu.edu/forum20/28>

This News Article is brought to you for free and open access by the Grand Valley Forum, 1976-2019 at ScholarWorks@GVSU. It has been accepted for inclusion in 1995-1996, Volume 20 by an authorized administrator of ScholarWorks@GVSU. For more information, please contact scholarworks@gvsu.edu.

Forum

A Newsletter for the
GRAND VALLEY
STATE UNIVERSITY
Community

Monday, February 19, 1996

Volume 20, Number 28

Athletics Director Search Committee Finds Good Fit in Selgo

After working as an athletic administrator at the University of Toledo for the last eight years, Tim Selgo says he's ready for a new challenge. He accepted Grand Valley's offer last week to be the university's fifth athletics director, replacing Mike Kovalchik, who resigned in December after serving as AD for seven years.

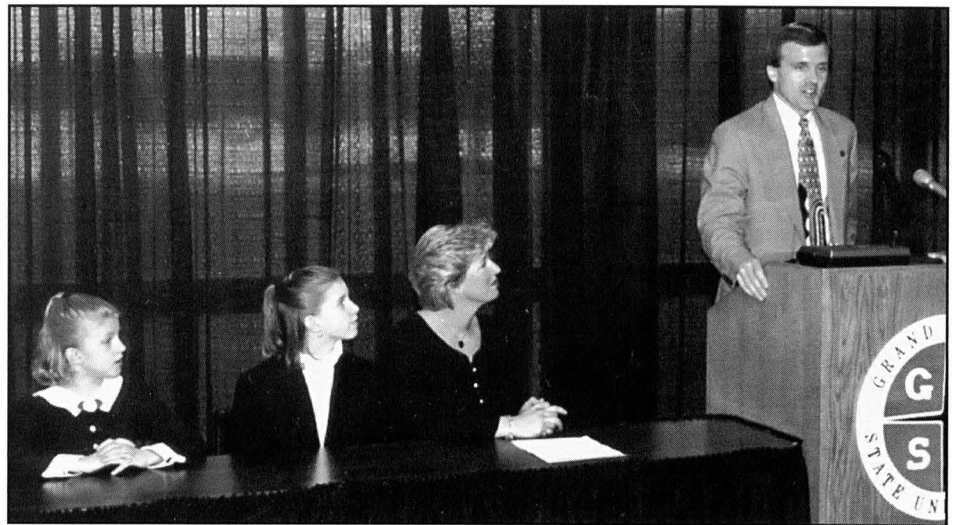
Selgo was introduced last Monday by Ron VanSteeland, vice president for Finance and Administration, during a press conference held at the Fieldhouse. "Tim comes to our institution with excellent credentials," VanSteeland said. "He brings to Grand Valley the administrative and leadership skills which match the needs of our program very effectively."

Selgo, 37, who plans to tackle his new duties at GVSU in mid-March, has 14 years' experience in coaching, athletic fund raising, marketing and running the day-to-day athletic operations at the University of Toledo, which include nine men's and 10 women's sports programs.

"I'm very excited to be here and be a part of the Grand Valley family," said Selgo. "Athletics is a major marketing tool for a school," he said, "and my one pledge is that I will do my very best to lead the athletics program here to success."

The Pettisville, Ohio, native was an All-State basketball player in high school and helped lead his hometown team to the state Class A finals. He won a full scholarship to University of Toledo, where he was an outstanding basketball player and was named the Senior Scholar Athlete of the Year in 1980.

Graduating from UT with a degree in physical education, he



Tim Selgo, newly appointed athletics director, answers questions during a news conference last Monday. His wife Terry and daughters Jennifer and Rachel look on.

then completed work on his master's degree in education administration in Toledo.

Selgo first served as a graduate assistant coach at UT and later as assistant men's basketball coach, from 1982 until 1985 when he began coaching the women's basketball team. "I've had a tremendous amount of experience in all areas of athletics at Toledo," said Selgo. "I hope to make Grand

Valley the best it can be in the Great Lakes Conference and nationally at the Division II level."

Selgo said that he has been an athletics director candidate at other schools, but felt Grand Valley was the right fit for him and for his family. "My wife and I feel good about raising our three kids in the Grand Rapids area," he said.

Across Campus

Manitou Computer Lab To Close Weekends

A recent study of computer usage in the labs has determined that the Manitou lab will no longer need to remain open on weekends.

Based on a study of computer usage in the Manitou lab and the Henry Hall

labs, it has been determined that the number of computers in Henry Hall is sufficient for weekend use.

Recruiting Efforts Completed

Head Football Coach Brian Kelly and his staff have just completed their

continued on page 3



FORUM

The GVSU *Forum* is published by the Office of University Communications every Monday when classes are in session and biweekly during the summer. The submission deadline is Tuesday noon. Send publication items to Kathleen Adams, editor, c/o the *FORUM* cc:Mail box. From off campus, email forum@gvsu.edu. Telephone: 616-895-2221. Fax: 616-895-2250. Visit FORUM ONLINE on the World Wide Web at: <http://www.gvsu.edu/>

Coming Events

COT Staff to Receive Personal Finance Advice

Grand Valley's Clerical, Office and Technical (COT) Development Committee will present a seminar titled "Decisions in Personal Finance" this Wednesday, February 21, from 8 - 10 a.m.

The seminar will be presented simultaneously at 314 Eberhard Center and 111 Henry Hall using the distance learning facilities. Gregg Dimkoff, professor of Finance in the Seidman School of Business, will discuss survival and growth opportunities for various finance topics, including budgets, credit, life insurance and investments.

To register, call Human Resources at x2215 and specify if you wish to reserve a spot in 111 Henry Hall or 314 Eberhard Center. Also indicate if special accommodations are needed.

This workshop is sponsored by the COT Development Committee, whose mission is to make workshops and seminars available to COT staff to enhance their personal and professional growth and to promote good will.

Faculty Forum Presents Cindy Hull

Cindy Hull, assistant professor of Anthropology, will be featured in the next Women

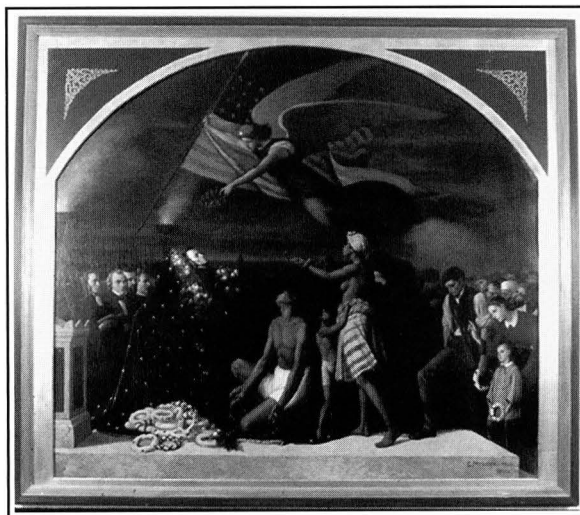
Scholars: Faculty Forum, on February 27 in Kirkhof Center's Muskegon River Room from 12 noon - 1 p.m. Presented by Grand Valley's Women's Studies Program, Hull will lecture on "Si podemos mandar (Yes, we can lead): Women's Changing Economic and Political Involvement in Yucatan." The event is open to all members of the campus community.

In 1992, a women's political party was formed in a Yucatecan village and a new discourse on local power relations was initiated. Hull's paper examines the origins of the "partido de mujeres" (women's party), its innovative members and how the women used political acumen to gain a strong political presence in the village. Contact Doris Rucks, x3732, for more information.

University Club News

Join the fun at the Grand Valley University Club Hawaiian Luau Pool Party on Sunday, February 25, from 1 - 3 p.m. at the Grand Valley Fieldhouse Pool. Tom Butcher will be the host and encourages faculty and staff to attend. Wear a favorite Hawaiian hat or shirt and win a prize. Punch and snacks will be available and organized races and games will be geared for the whole family. For reservations, contact the University Club by cc:Mail or contact Sharon Palmitier at x6770.

Lincoln Collection Goes On the Road



GVSU's Harvey Lemmen Collection on Lincoln and the Civil War had its first off-campus public showing early in February at a meeting of the Grand Rapids Rotary Club. Grand Valley members of Rotary arranged the presentation for nearly 100 people at the Van Andel Museum Center, which included a lecture by Darryl Cochrane, a Lincoln authority. Dean of Minority Affairs Don Williams introduced the program and Bob Beasecker, senior librarian, presented the collection.

Slides of the Lincoln Collection can be viewed on Grand Valley's World Wide Web site; just click on the *GVSU Spotlights* button.

Across Campus

continued from page 1

recruiting efforts for the 1996-97 academic year and report that many faculty and staff helped make their efforts successful.

Kelly named the following faculty, administration and support staff who gave special support: Carl Arendsen, Math and Statistics; Kathleen Bailey and Jonathan White, from Criminal Justice; Tom Yakish and Paul Plotkowski, from Engineering; Kathy Gulembo and Emery Turner, from the Seidman School of Business; Dan Dillingham and John Pedraza, from EXCEL; Paul Doane, Ken Fridsma and Wendy Johnston, from Financial Aid; Leroy Hackley, Health, Recreation and Wellness; Andy Beachnau, Britt Lindholm and Ken James, from Housing; Craig Kolins, Bill Eilola, Patti Leavenworth, Darrell Johnson and Rich Howard, from Admissions; and Janet Robinson, Records/Registration.

Campaign Breaks Record for Faculty/Staff Giving

The 1995 Faculty/Staff Campaign ended with record-breaking success, bringing in 36 percent more in gifts than the previous year. "Grand Valley continues to have one of the best employee giving records among similar institutions," touted campaign coordinator Nancee Miller. "The results stand to support the claim."

Out of 1,006 employees, 546 made contributions for a total \$129,687.65. In addition, 34 retirees donated \$34,540 and 49 adjunct faculty contributed \$7,903, for an overall total of \$172,130.65, compared to \$126,648 in 1994.

"Thanks to all who contributed to the campaign and a very special thanks to the campaign cabinet who contacted colleagues and encouraged them to give," Miller said. "This is truly a grassroots effort that requires the dedication, enthusiasm and generosity of many people."

Those who worked on the campaign attribute its success to several factors:

- New endowment funds attracted several new donors.
- Employees at Physical Plant Services had the highest participation of any

campus group thanks to the efforts of John Scherff and other leaders from the employee group. More than 80 percent of the Physical Plant employees gave to the PSP Descendants Scholarship Endowment Fund.

- The agreement with President Lubbers to use undistributed interest income from the general endowment fund to match faculty and staff giving to designated endowment funds served as a catalyst to donors.
- The campaign cabinet and co-chairs, Dean Mary Seeger and Professor Bill Baum, provided colleague-to-colleague encouragement. They

made personal contacts, answered questions and handled paperwork. Professor Emeritus John Tevebaugh, the link to GVSU retirees, played a similar role.

- Payroll deduction made giving convenient.

Miller offered a special thank you to Dori Gates, Donella Anderson and Judy Story in the Development Office, and Brian VanDoeselaar, Kristi Fosdick and Linda Longnecker in the Payroll Office. "All of these people worked hard to handle all the individual needs associated with payroll deduction and donor preferences," she said.



Campaign cabinet members learned about the new endowments during the Kick Off Breakfast. Volunteers included (left to right): Coordinator of Women's Studies Doris Rucks, Mary Last, instructor of Computer Science, and Janet Vail, research associate from Water Resources Institute.

Faculty and Staff Sketches

Sue Korzinek, GVSU's newly appointed Academic Systems Manager in the Academic Computing department, received her promotion after serving in that position for most of this academic year. Korzinek worked in the Administrative Programming department for nearly three years as a systems analyst, where she was responsible for a variety of projects, including the university's integrated cashiering system. Her new position puts her in charge of the management of Academic Computing's faculty support services, the computer labs, the Information Technology seminar series, the Help Desk, and Computer Store.



Sue Korzinek

"I really enjoy being back at GVSU and seeing all of the changes that have taken place since I graduated," said Korzinek, who received her bachelor's degree in Computer Science from Grand Valley in 1983. "I'm looking forward to the challenges that my position will bring and the opportunities to further my knowledge."

continued on page 4

Calendar of Events

Cultural Events

Arts Hotline: (616) 895-ARTS

Gallery Hours: 10 a.m.-5 p.m. Mon.-Fri., 10 a.m.-7 p.m. Thurs. All activities on Allendale Campus unless otherwise noted.

Thurs., Feb. 1-Thurs., Feb. 29

Gallery Hours: Traditional African Sculpture. Exhibition of African sculpture from local collections. Calder Gallery, CFAC.

Tues., Feb. 20

12 noon: Lunchbreak Series. Mixed Blood Theatre Company. Louis Armstrong Theatre, CFAC.

Sun., Feb. 25

3 p.m.: Music Department Concert. Choral Concert, Ellen Pool, conductor. Louis Armstrong Theatre, CFAC.

General Events

Mon., Feb. 19

8:30-10:30 a.m.: Mail Distribution Seminar. Skunkworks, SER. Call Sec Garcia, x3850.

12 noon: Winter Coaches Luncheon. University Room, MCH. Call Cheryl Anderson, x3259.

7-9:30 p.m.: The Great Wine & Food Symposium sponsored by WGUV-TV, Channel 35 and WGK-TV, Channel 52. Ambassador Ballroom, Amway Grand Plaza Hotel. Call Shirley Dilworth, x6728.

1 p.m.: Faculty Teaching Workshop, "Using Film and Video in the Classroom - Techniques and Resources," Barbara Roos, presenter. 106 STU. Call x2754.

3 p.m.: Adult Children of Alcoholics. First of five sessions, Jody Swartz, leader. 204 STU. Call x3266.

Wed., Feb. 21

8-10 a.m.: COT Development Committee Workshop, "Decisions in Personal Finance." 111 HRY/314 EC. Call x2215.

8:30-10:30 a.m.: Mail Distribution Seminar. Skunkworks, SER. Call x3850.

11 a.m.-3 p.m.: Study Abroad Information Day. 105 STU. Call x3898.

12 noon-5:45 p.m.: TIAA/CREF individual counseling. Human Resources Office, ASH. Call x2220.

1:30 p.m.: TIAA/CREF seminar, "Making Your Money Work as Hard as You Do." Muskegon River Room, KC. Call x2220.

5:15 p.m.: Mystery Readers Club. MCH.

Thurs., Feb. 22

8 a.m.-12 noon: Nonprofit Legal Issues Conference co-sponsored by the Direction Center and the Grand Rapids Bar Association. Dominican Center at Marywood. Call (616) 459-3773.

8:30 a.m.-2:45 p.m.: TIAA/CREF individual counseling. Human Resources Office, ASH. Call x2220.

9 a.m.: TIAA/CREF seminar "Planning and Investing Wisely." Rooms 200A and 200B, KC. Call x2220.

10:30 a.m.: TIAA/CREF Pre-Retirement Workshop. Rooms 200A and 200B, KC. Call x2220.

1:30 p.m.: TIAA/CREF seminar "Jump Starting Your Financial Future." 106 STU. Call x2220.

2:30 p.m.: Black History Month lecture, Nikki Giovanni, presenter. Grand River Room, KC. Call x2177.

Fri., Feb. 23

8:30-10:30 a.m.: Mail Distribution Seminar. Skunkworks, SER. Call x3850.

9 a.m.: Black History Month Bone Marrow Drive. All day. 130 COM. Call x2177.

2-4 p.m.: Faculty Forum. Faculty Teaching Center proposed model. 174 LSH.

Sports

Sports Hotline: 895-3800. Game times subject to change.

Wed., Feb. 21

6 p.m.: Men's & Women's Swimming & Diving. GVSU at GLIAC Diving Championships. WSU, Detroit.

Thurs., Feb. 22-Sat., Feb. 24

11 a.m. & 6 p.m.: Men's & Women's Swimming & Diving. GVSU at GLIAC Championships. WSU, Detroit

Thurs., Feb. 22

5:45 p.m.: Women's Basketball. Ashland University at GVSU.

7:45 p.m.: Men's Basketball. Ashland University at GVSU.

Fri., Feb. 23

11 a.m.: Men's & Women's Track & Field. GLIAC Meet at GVSU.

Sat., Feb. 24

1 p.m.: Women's Basketball. Hillsdale College at GVSU.

3 p.m.: Men's Basketball. Hillsdale College at GVSU.

Faculty and Staff Sketches

continued from page 3

Before coming to GVSU, Korzinek worked for nine years at Universal Companies in Grand Rapids.

Mary Barnum, advertising/marketing manager in the Office of University Communications, was elected in January to the board of Second Harvest Gleaners Food Bank of West Michigan Inc.

Associate Professor of English Ben Lockerd had an article titled "The Heraldean Exchange of Elements in *Four Quartets*" published in *The Modern Schoolman*.

In the News

Emery Turner, dean of the Seidman School of Business, was interviewed by *The Grand Rapids Press* regarding the proposed expansion to Grand Valley's downtown campus. The front-page article appeared in

the February 12 edition. In the same article, Matt McLogan, vice president for University Relations, was also quoted. He explained the private funding needed for the project.

1996 Faculty Workshops Series in Full Swing

A series of workshops is being presented by Grand Valley faculty for the Faculty Teaching Center. Associate Professor of Communications Barbara Roos will present the third workshop in the series, "Using Film and Video in the classroom - Techniques and Resources," today, February 19, from 1 - 2 p.m. in 106 STU. All faculty are welcome to attend. For more information, call Norm Ten Brink at x2754.

Job Openings

Clerical, Office, Technical

Administrative Assistant, Intercollegiate Athletics - \$13.38 - \$15.04.

Secretary, School of Public Administration (25 Commerce Street, Grand Rapids) - \$10.15 - \$11.45.

Confidential Clerical

Executive Secretary, Academic & Student Affairs Division - \$27,126 - \$38,148.

Faculty

Assistant/Associate Professor, Biology/Natural Resource Management - Salary range begins at \$28,600 for assistant and \$34,100 for associate.