

7-2006

## Female Headed Households Below the Poverty Line within Grand Rapids, MI in 2000

Community Research Institute-Johnson Center

Follow this and additional works at: <https://scholarworks.gvsu.edu/jcpmaps>



Part of the [Demography, Population, and Ecology Commons](#)

---

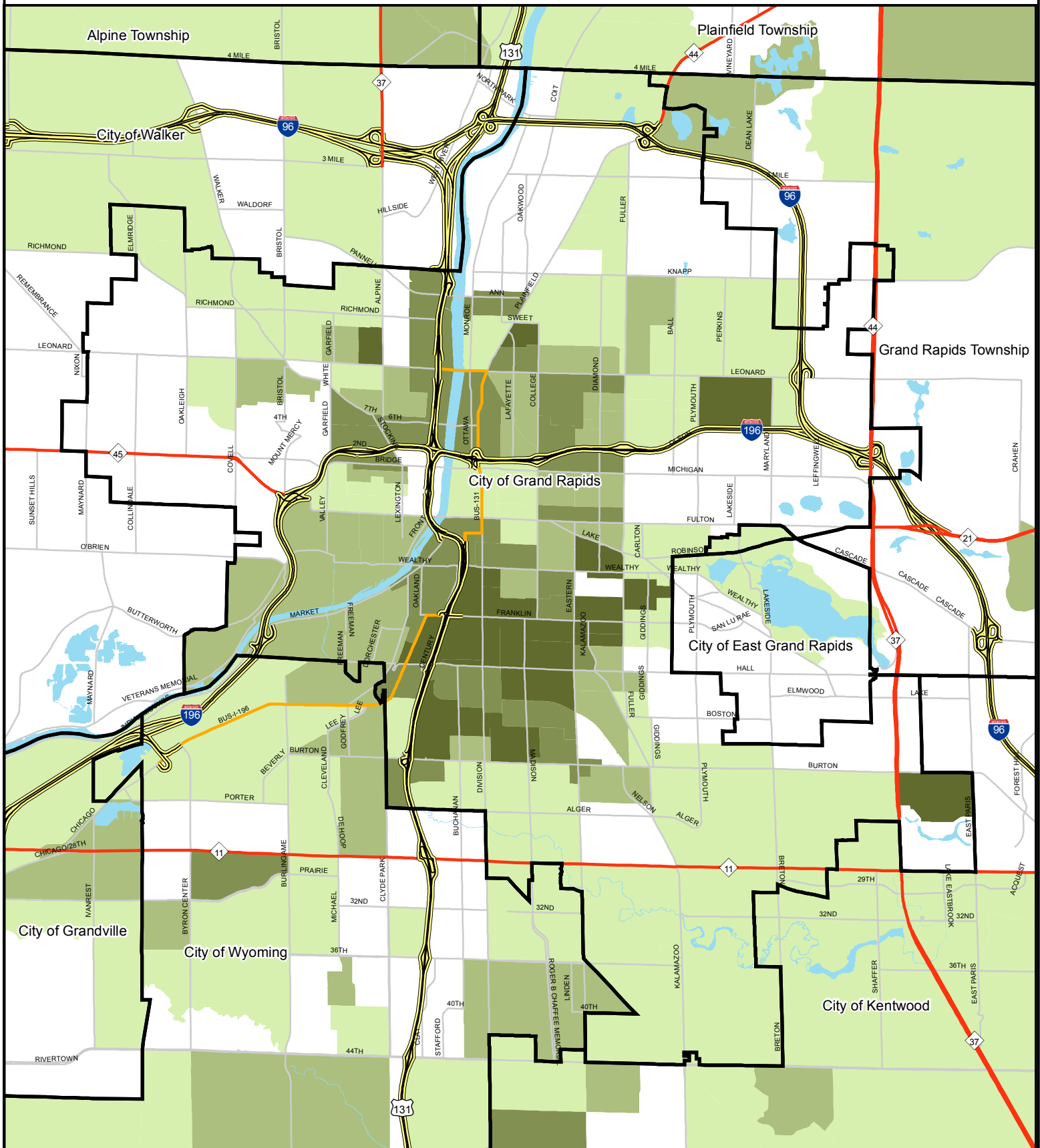
### ScholarWorks Citation

Community Research Institute-Johnson Center, "Female Headed Households Below the Poverty Line within Grand Rapids, MI in 2000" (2006). *Community Maps*. 105.  
<https://scholarworks.gvsu.edu/jcpmaps/105>

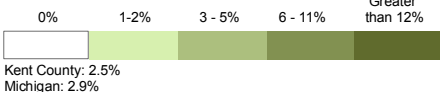
This Article is brought to you for free and open access by the Dorothy A. Johnson Center for Philanthropy at ScholarWorks@GVSU. It has been accepted for inclusion in Community Maps by an authorized administrator of ScholarWorks@GVSU. For more information, please contact [scholarworks@gvsu.edu](mailto:scholarworks@gvsu.edu).

# Female Headed Households Below the Poverty Line within Grand Rapids, MI in 2000

Geography: Census Block Groups Universe: Households



## Legend: Percent Female Headed Households Below the Poverty Line



- Lakes and Rivers
- Cities and Townships

- Expressway
- Business Route
- State Highway
- Primary Street

**Community Research Institute**  
Dorothy A. Johnson Center for Philanthropy and Nonprofit Leadership  
Grand Valley State University  
Date: July, 2006  
Prepared by: Ryan Bosscher and Jeremy Pyme  
Projection: Michigan South- NAD 83 Intl. feet  
Sources: 2000 U.S. Census Bureau Table: SF3 P92  
REGIS