

12-2008

Median Household Income in 2000, Grand Rapids

Community Research Institute-Johnson Center

Follow this and additional works at: <https://scholarworks.gvsu.edu/jcpmaps>



Part of the [Demography, Population, and Ecology Commons](#)

ScholarWorks Citation

Community Research Institute-Johnson Center, "Median Household Income in 2000, Grand Rapids" (2008). *Community Maps*. 50.

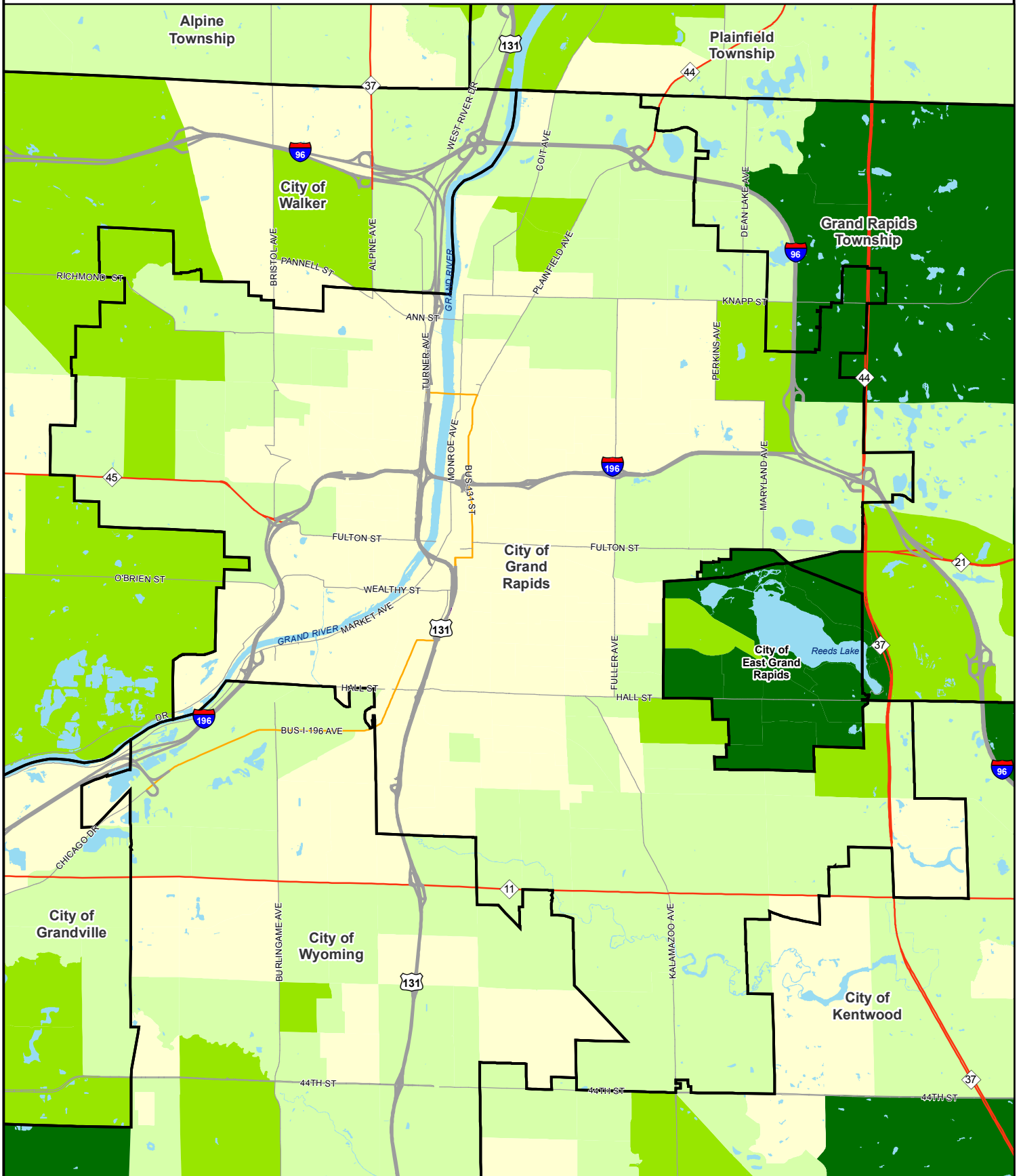
<https://scholarworks.gvsu.edu/jcpmaps/50>

This Article is brought to you for free and open access by the Dorothy A. Johnson Center for Philanthropy at ScholarWorks@GVSU. It has been accepted for inclusion in Community Maps by an authorized administrator of ScholarWorks@GVSU. For more information, please contact scholarworks@gvsu.edu.

Median Household Income in 2000

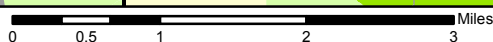
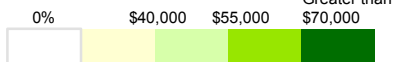
Universe: Households

Geography: Census Block Groups, Grand Rapids, MI.



Median Household Income

Kent County:
\$45,980
Michigan:
\$44,667



- Cities and Townships
- Lakes and Rivers
- Expressway
- Business Route
- State Highway
- Primary Street

Community Research Institute
Dorothy A. Johnson Center for Philanthropy
and Nonprofit Leadership
Grand Valley State University
Date: December, 2008
Prepared by: Joseph Severson
Projection: Michigan South- NAD 83 Int. feet
Sources: 2000 U.S. Census Bureau Table: SF3 P53
REGIS