

12-2008

Median Individual Earnings in 2000, Grand Rapids

Community Research Institute-Johnson Center

Follow this and additional works at: <https://scholarworks.gvsu.edu/jcpmaps>



Part of the [Demography, Population, and Ecology Commons](#)

ScholarWorks Citation

Community Research Institute-Johnson Center, "Median Individual Earnings in 2000, Grand Rapids" (2008). *Community Maps*. 47.

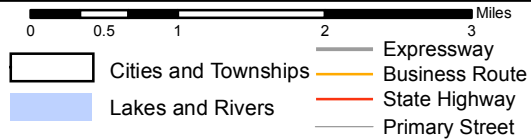
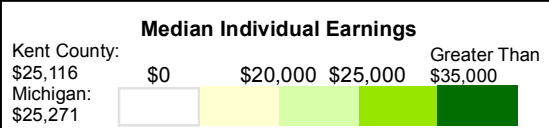
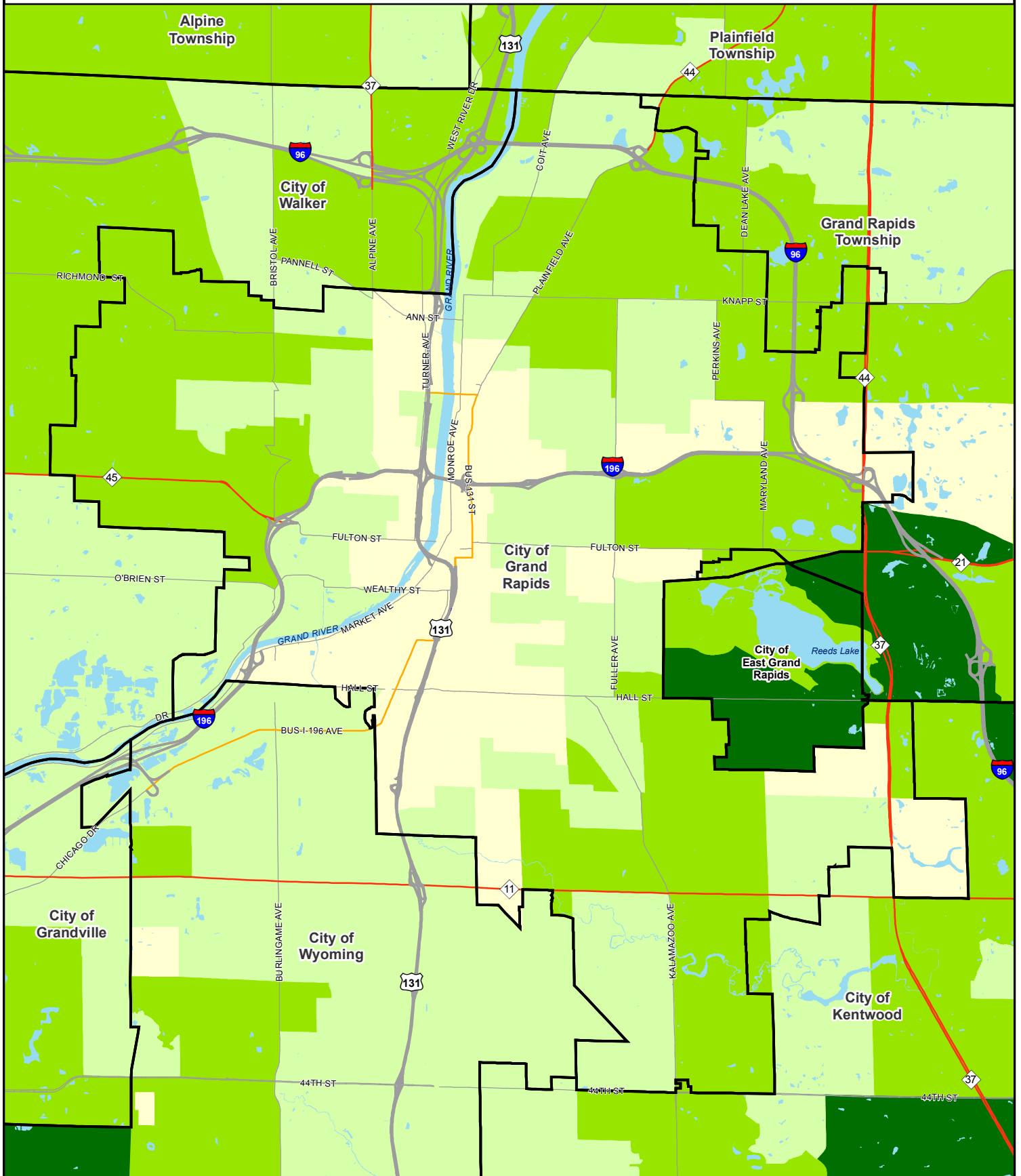
<https://scholarworks.gvsu.edu/jcpmaps/47>

This Article is brought to you for free and open access by the Dorothy A. Johnson Center for Philanthropy at ScholarWorks@GVSU. It has been accepted for inclusion in Community Maps by an authorized administrator of ScholarWorks@GVSU. For more information, please contact scholarworks@gvsu.edu.

Median Individual Earnings in 2000

Universe: Population 16 Years and Older with Earnings

Geography: Census Block Group, Grand Rapids, MI



Community Research Institute
 Dorothy A. Johnson Center for Philanthropy and Nonprofit Leadership
 Grand Valley State University
 Date: December, 2008
 Prepared by: Joseph Severson
 Projection: Michigan South- NAD 83 Int. feet
 Sources: 2000 U.S. Census Bureau Table: SF3 P85
 REGIS