

12-2008

## Percentage of Households Not Owning Vehicles in 2000, Grand Rapids

Community Research Institute-Johnson Center

Follow this and additional works at: <https://scholarworks.gvsu.edu/jcpmaps>



Part of the [Demography, Population, and Ecology Commons](#)

---

### ScholarWorks Citation

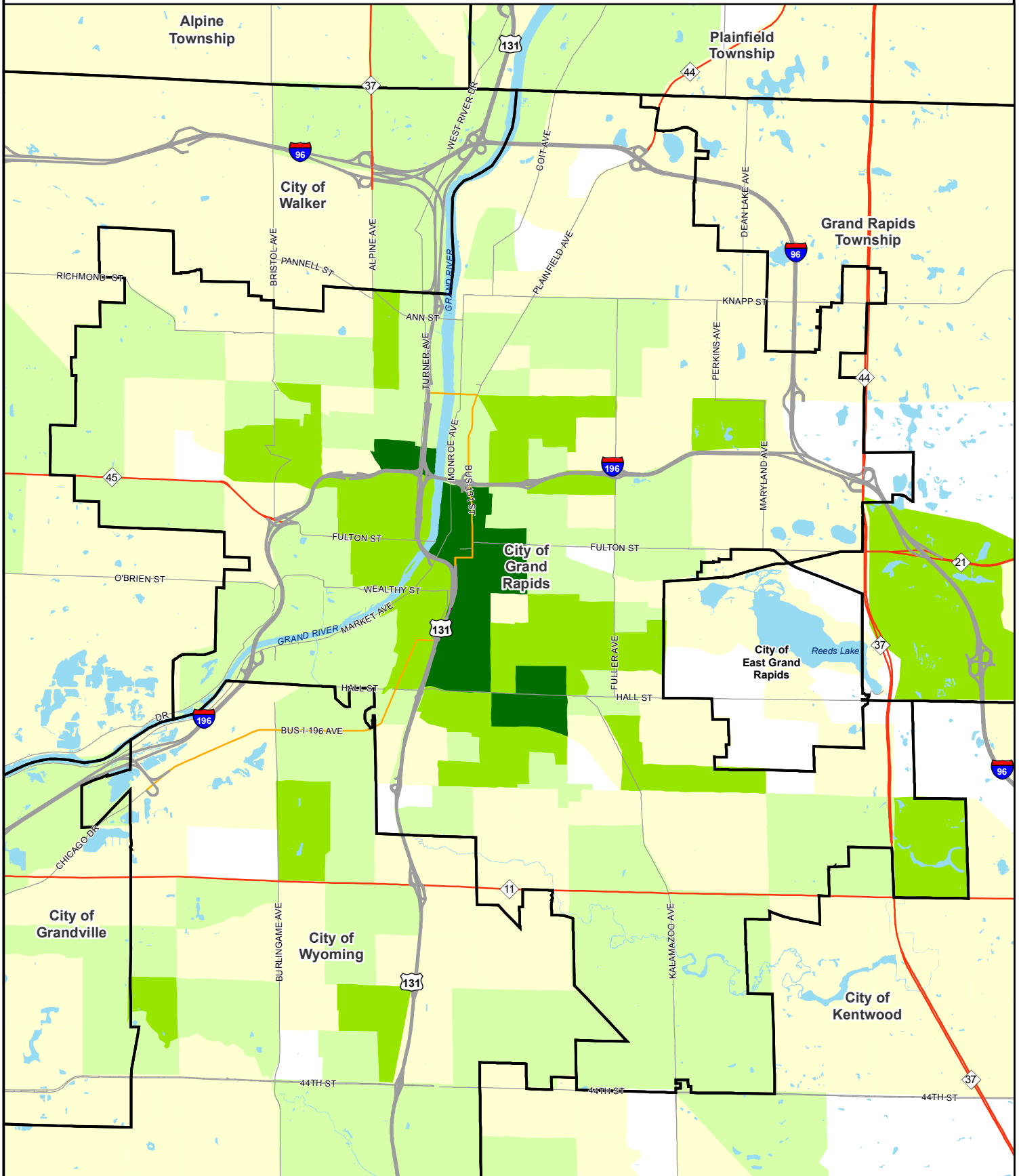
Community Research Institute-Johnson Center, "Percentage of Households Not Owning Vehicles in 2000, Grand Rapids" (2008). *Community Maps*. 36.  
<https://scholarworks.gvsu.edu/jcpmaps/36>

This Article is brought to you for free and open access by the Dorothy A. Johnson Center for Philanthropy at ScholarWorks@GVSU. It has been accepted for inclusion in Community Maps by an authorized administrator of ScholarWorks@GVSU. For more information, please contact [scholarworks@gvsu.edu](mailto:scholarworks@gvsu.edu).

# Percentage of Households Not Owning Vehicles in 2000

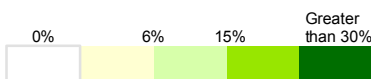
Universe: Households

Geography: Census Block Groups, Grand Rapids, MI

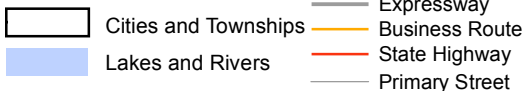


## Percent of Households Not Owning a Vehicle

Kent County:  
7.0%  
Michigan:  
7.7%



0 0.5 1 2 3 Miles



**Community Research Institute**  
Dorothy A. Johnson Center for Philanthropy  
and Nonprofit Leadership  
Grand Valley State University  
Date: December, 2008  
Prepared by: Joseph Severson  
Projection: Michigan South- NAD 83 Int. feet  
Sources: 2000 U.S. Census Bureau Table: SF3 H44  
REGIS