

12-2008

Population Density, Grand Rapids, MI 2000

Community Research Institute-Johnson Center

Follow this and additional works at: <https://scholarworks.gvsu.edu/jcpmaps>



Part of the [Demography, Population, and Ecology Commons](#)

ScholarWorks Citation

Community Research Institute-Johnson Center, "Population Density, Grand Rapids, MI 2000" (2008).
Community Maps. 28.

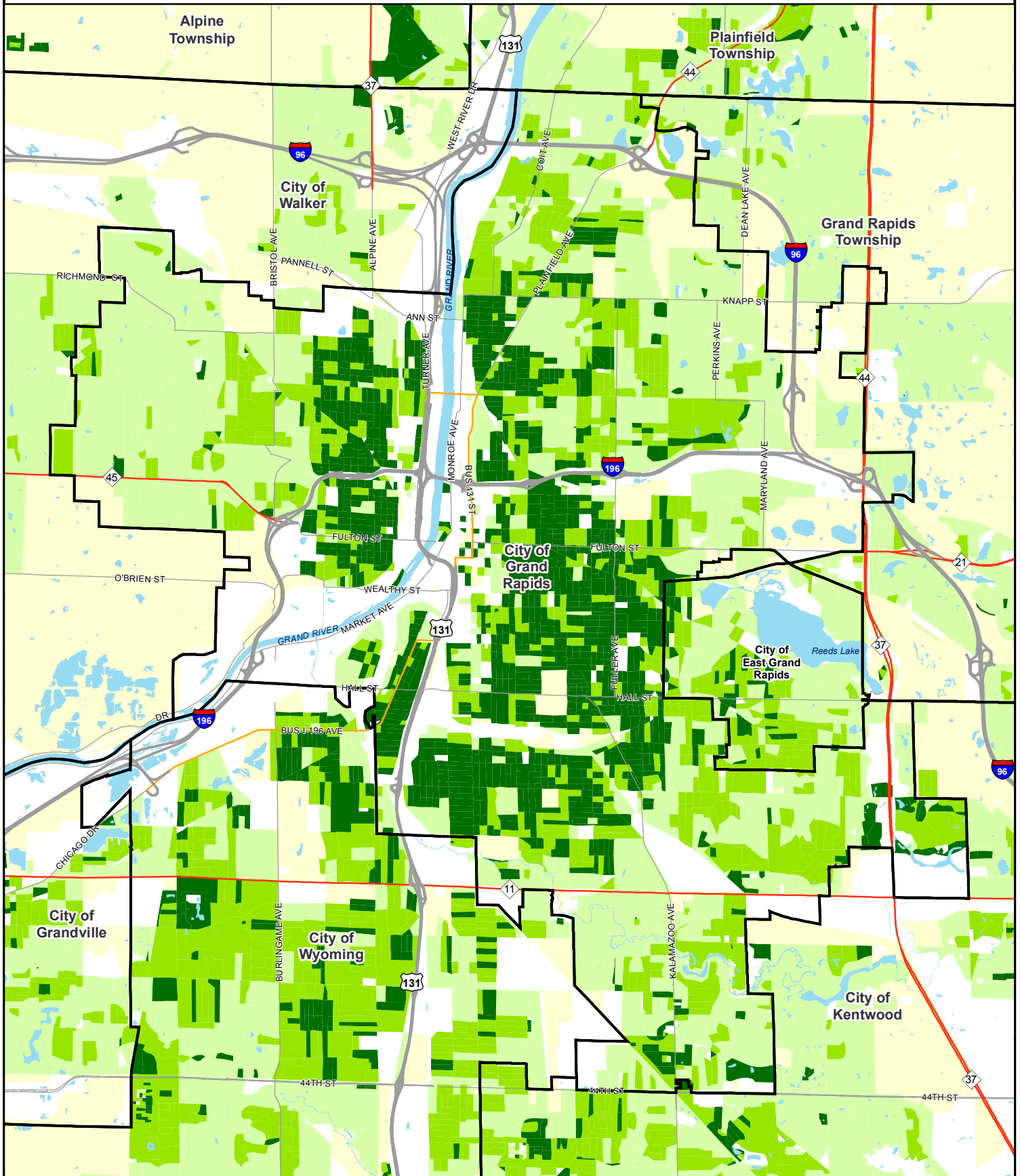
<https://scholarworks.gvsu.edu/jcpmaps/28>

This Article is brought to you for free and open access by the Dorothy A. Johnson Center for Philanthropy at ScholarWorks@GVSU. It has been accepted for inclusion in Community Maps by an authorized administrator of ScholarWorks@GVSU. For more information, please contact scholarworks@gvsu.edu.

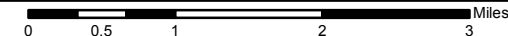
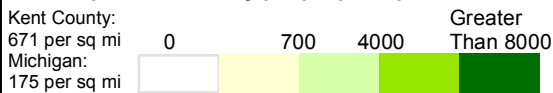
Population Density in 2000

Universe: Total Population

Geography: Census Blocks, Grand Rapids, MI



Population Density people per square mile



- Cities and Townships
- Lakes and Rivers
- Expressway
- Business Route
- State Highway
- Primary Street

Community Research Institute
 Dorothy A. Johnson Center for Philanthropy
 and Nonprofit Leadership
 Grand Valley State University
 Date: December, 2008
 Prepared by: Joseph Severson
 Projection: Michigan South- NAD 83 Int. feet
 Sources: 2000 U.S. Census Bureau Table: SF1 P08
 REGIS