

The Foundation Review

a publication of the Dorothy A. Johnson Center for Philanthropy at Grand Valley State University

Volume 7
Issue 1 *Philanthropy Consulting- Open Access*

3-31-2015

Back Matter

Follow this and additional works at: <https://scholarworks.gvsu.edu/tfr>



Part of the [Nonprofit Administration and Management Commons](#), and the [Public Affairs, Public Policy and Public Administration Commons](#)

Recommended Citation

(2015). Back Matter. *The Foundation Review*, 7(1). <https://doi.org/10.9707/1944-5660.1242>

Copyright © 2015 Dorothy A. Johnson Center for Philanthropy at Grand Valley State University. The Foundation Review is reproduced electronically by ScholarWorks@GVSU. <https://scholarworks.gvsu.edu/tfr>



VOL. 7 ISSUE 1

RESULTS

6 Use of Consultants by U.S. Foundations: Results of a Foundation Center Survey

Lawrence T. McGill, Ph.D., Brenda L. Henry-Sanchez, Ph.D., David Wolcheck, B.A., and Sarah Reibstein, B.A., Foundation Center

While we've known for years that foundations use consultants to support various aspects of their work, we've never had a quantitative picture of how many, how often, and for what purposes. This article presents the results of a survey done in collaboration with National Network of Consultants to Grantmakers to examine use of consultants by community, corporate, and independent foundations whose annual giving totals at least \$100,000. The survey found that while frequency of consultant use rises dramatically as foundation size increases, there are no major differences in frequency by foundation type.

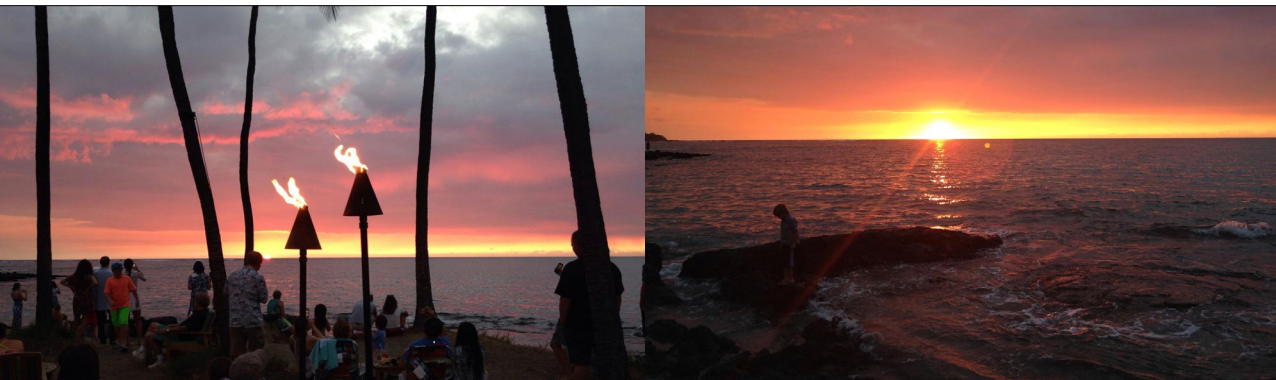
DOI: 10.9707/1944-5660.1231

19 The Family Foundation Life Cycle and the Role of Consultants

Melissa L. Nemon, Ph.D., and Claudia J. Jacobs, M.S.W., Brandeis University, and Mary Phillips, M.S., and Judy Sneath, M.B.A., GMA Foundations

The dynamics unique to family foundations, including a dedication to preserving a legacy and to sharing decision-making among family members, are often a significant influence on a foundation's governance and operations and may extend to how their experiences with consultants differ from those of other foundations or nonprofits. This article looks at common experiences that lead family foundation to seek external help and how these foundations can learn from the experiences of their peers. The authors introduce the Family Foundation Life Cycle as a lens for understanding the stages of operations and provide a Family Foundation/Consultant Guide.

DOI: 10.9707/1944-5660.1232



TOOLS

33 Understanding Philanthropy Consulting: A Tool to Identify the Roles and Capabilities Needed From External Support

Brian Leslie, M.B.A., Kelsey Noonan, B.A., and Clint Nohavec, M.B.A., SwitchPoint LLC

The philanthropy consulting sector has evolved rapidly in the past decade. Philanthropies face increasingly complex strategic challenges and are engaging consultants to play a more diverse set of roles in a broader range of assignments. In this article, the authors categorize the distinct roles played by philanthropy consultants and present a tool and framework for charitable foundations to identify and evaluate the roles and capabilities they need from those consultants. The result is a better decision-making process.

DOI: 10.9707/1944-5660.1233

45 How to Implement a Funder-Supported Advocacy Effort and the Integral Role of Policy Consultants

Deena Margolis, M.P.A., Focali Consulting LLC; and Leah M. Ersoylu, Ph.D., Ersoylu Consulting

Over the past decade, there has been growing recognition in the philanthropic field that advocacy can be a powerful tool for funders to effect systemic change within the communities where they invest programmatically. This article details the key considerations for preparing and launching a successful advocacy effort, as well as specific tools that can help foundations and their grantees make the best use of an external policy consultant.

DOI: 10.9707/1944-5660.1234



SECTOR

56 Both Sides of the Equation

Barbara D. Kibbe, J.D., S. D. Bechtel, Jr. Foundation

Client and consultant can have fundamentally different perspectives on the progress and success of a consulting engagement. This article explores the insights and lessons learned by a dozen professionals who have been on both sides of the equation in consulting to philanthropy. It boils down to this: Consultants need to be better consultants and foundations need to be better clients.

DOI: 10.9707/1944-5660.1235

71 Effective Consulting Partnerships to Philanthropy

Ellen Irie, M.P.H., Kim Ammann Howard, Ph.D., and Ria Sengupta Bhatt, M.P.P., Informing Change; and Naomi Orensten, Ed.M., Center for Effective Philanthropy

The problems our society faces today are too great in number, depth, and complexity for any one organization to tackle alone. As a result, partnerships are formed. This article explores an often-overlooked aspect of working with consultants in philanthropy – the partnerships among the consultants themselves. The authors aim to provide a framework for thinking about and engaging in consulting partnerships in the field of philanthropy.

DOI: 10.9707/1944-5660.1236

82 Balancing Content and Process Expertise in the Practice of Foundation Consulting

Christopher Cardona, Ph.D., TCC Group

Despite foundations' frequent recourse to consultants, little, if anything, has been written on the expertise required of foundation consultants and how they cultivate it. This article looks at the types of expertise that these consultants bring to their work and for which their clients hire them. The author offers examples of how content, process, and/or hybrid expertise might combine to address particular foundation needs, and incorporates the perspectives of 12 consultants to philanthropy, ranging from solo practitioners to members of large firms.

DOI: 10.9707/1944-5660.1237

REFLECTIVE PRACTICE

98 Shine a Light: The Role of Consultants in Fostering a Learning Culture at Foundations

Jared Raynor, M.S., Ashley Blanchard, M.P.P., and Marieke Spence, M.A.L.D., TCC Group

Noticeably absent on the list of reasons foundations cite for engaging consultants is learning – a particularly important attribute for foundations that grapple with complex issues in dynamic environments. This article proposes that being explicit about the value of fostering a learning culture in a foundation within the context of any consulting engagement will enable both parties to more proactively strive for and achieve learning results. The authors' analysis uses this premise as a jumping-off point to deeper exploration of the myriad ways – some simple, some complex - that consultants help foundations cultivate a learning mindset.

DOI: 10.9707/1944-5660.1238

113 Going Beyond Grantmaking: Using External Help to Extend a Foundation's Core Competencies and Increase Its Impact

Gwen Walden, M.A., Lauren Marra, M.P.P., and Katrina Briddell, M.T.S., Arabella Advisors

The drive to achieve impact beyond grantmaking represents a paradigm shift in the way foundations seek to make social change. This article presents three cases: incubating and launching a new organization, effectively deploying impact investments, and collaborating to advocate for policy change. Using these cases and other experience as a reference base, the authors identify five ways funders can use consultants and other intermediaries to pursue impact beyond grantmaking, and explores several common pitfalls.

DOI: 10.9707/1944-5660.1239

REVIEWS

127 Review of *The Social Profit Handbook: The Essential Guide to Setting Goals, Assessing Outcomes, and Achieving Success for Mission-Driven Organizations*

Review by Paul G. Putman, Ph.D., Cleveland Foundation

The Social Profit Handbook carries the subtitle *The Essential Guide to Setting Goals, Assessing Outcomes, and Achieving Success for Mission-Driven Organizations*. Putnam wishes the author had skipped the main title and simply used the subtitle. This book is more aptly described as a guide as it takes you through a series of exercises as though you were attending a facilitated workshop. At its core, this is a book about assessment in the nonprofit/third sector written for executive directors, board members, staff members, and foundation officers who want to do better but have found traditional assessment methodology inaccessible or inadequate. A bonus foot-long bookshelf appears in the appendix.

DOI: 10.9707/1944-5660.1240

Call for Papers

FOR VOLUME 8, ISSUE 1

Abstracts of up to 250 words are being solicited for Volume 8, Issue 1 of *The Foundation Review*. This issue will be an open (unthemed) issue. Papers on any topic relevant to organized philanthropy are invited.

Submit abstracts to submissions@foundationreview.org by May 15, 2015. If a full paper is invited, it will be due Sept. 15, 2015 for consideration for publication in March 2016.

Abstracts are solicited in four categories:

- **Results.** Papers in this category generally report on findings from evaluations of foundation-funded work. Papers should include a description of the theory of change (logic model, program theory), a description of the grant-making strategy, the evaluation methodology, the results, and discussion. The discussion should focus on what has been learned both about the programmatic content and about grantmaking and other foundation roles (convening, etc.).
- **Tools.** Papers in this category should describe tools useful for foundation staff or boards. By “tool” we mean a systematic, replicable method intended for a specific purpose. For example, a protocol to assess community readiness and standardized facilitation methods would be considered a tool. The actual tool should be included in the article where practical. The paper should describe the rationale for the tool, how it was developed, and available evidence of its usefulness.
- **Sector.** Papers in this category address issues that confront the philanthropic sector as whole, such as diversity, accountability, etc. These are typically empirically based; literature reviews are also considered.
- **Reflective Practice.** The reflective practice articles rely on the knowledge and experience of the authors, rather than on formal evaluation methods or designs. In these cases, it is because of their perspective about broader issues, rather than specific initiatives, that the article is valuable.

BOOK REVIEWS: *The Foundation Review* publishes reviews of relevant books. Please contact the editor to discuss submitting a review. Reviewers must be free of conflicts of interest.

Please contact Teri Behrens, Editor of *The Foundation Review*, with questions at behrenst@foundationreview.org or 734-646-2874.

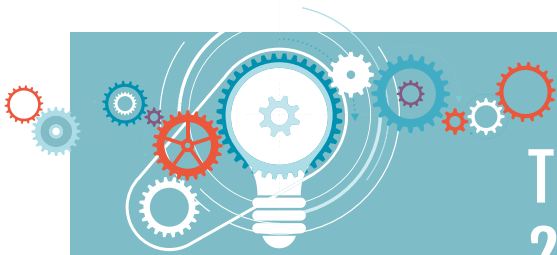


This publication is printed
with soy ink.

Printed in USA



b-e-f.org



THE GRANTMAKING SCHOOL 2015 COURSE SCHEDULE

May

4-5
2015

Advanced Proposal Analysis | Grand Rapids, Mich.

Instructors: Robert Eckardt, Ph.D. & Alvertha Penny, M.S.U.S.

More Info: <http://tinyurl.com/ProposalAnalysisMichigan>

May

14-15
2015

Strategy Development in Grantmaking | Des Moines, Iowa

Instructors: DeDe Esque & Gayle Williams, M.Ed.

More Info: <http://tinyurl.com/StrategyDevelopmentIowa>

June

1-2
2015

Evaluation for Grantmakers | Grand Rapids, Mich.

Instructors: Teri Behrens, Ph.D. & Gale Berkowitz

More Info: <http://tinyurl.com/EvaluationMichigan>

Oct.

1-2
2015

Strategy Development in Grantmaking | Detroit, Mich.

Instructors: Allison Lugo-Knapp & Alvertha Penny, M.S.U.S.

More Info: <http://tinyurl.com/StrategyDevelopmentMichigan>

For more information, visit:

<http://johnsoncenter.org/events/category/foundationsevent/>



JOHNSON CENTER
AT GRAND VALLEY STATE UNIVERSITY

Trusted Guidance for Doing Good

AN ACADEMIC CENTER OF



**GRAND VALLEY
STATE UNIVERSITY**
COLLEGE OF COMMUNITY
AND PUBLIC SERVICE



Putnam Consulting Group

Confident Giving • Dramatic Return

philanthropy nonprofit academia

STERNHEIM CONSULTING

Marci B. Sternheim, Ph.D., *Principal*

marci@sternheimconsulting.com

www.sternheimconsulting.com

203-644-2560

- Governance education and training
- Organizational assessment and capacity building
- Retreat and meeting facilitation
- Customized grantmaking programs
- Strategic and long-range planning
- Mediation, mentoring, and coaching
- Special projects
- Public speaking

We are honored to thank the many members and partners of National Network of Consultants to Grantmakers, and the staff of *The Foundation Review*, who dedicated their ideas, energy, time, and considerable talent to creating this first-ever edition dedicated to the practice of philanthropic consulting.

"Great discoveries and improvements invariably involve the cooperation of many minds."

- Alexander Graham Bell

Kris Putnam-Walkerly, President

www.putnam-consulting.com

ADVERTISE IN:

THE

FoundationReview

Advertising Office:

Pat Nanzer

Phone: 616-331-7593

Email: nanzerp@gvsu.edu

Mechanical Specifics for Print:

Width and Height

Full Page: 6" x 9"

Full Page Bleed: 7.25" x 10.25"

Half Page (H): 6" x 4.25"

Half Page (V): 2.75" x 9"

Quarter Page: 2.75" x 4.25"

YOUR AD HERE

NATIONAL SUMMIT ON FAMILY PHILANTHROPY

June 15-16, 2015 | New York, NY

Organized by the Dorothy A. Johnson Center for Philanthropy
in collaboration with Philanthropy New York



Better Together Stronger Collaboration for Smarter Philanthropy

The National Summit is an invitation-only, donor-focused, highly interactive gathering that brings together current and next generation family donors of all sorts from all over the country, as well as thought leaders, staff, and others who help families become more effective philanthropists. Join us in New York this June for a lively, productive conversation about collaboration in family giving.

For more information, and to inquire about an invitation visit:
johnsoncenter.org/summit/it



JOHNSON CENTER
AT GRAND VALLEY STATE UNIVERSITY

Trusted Guidance for Doing Good

AN ACADEMIC CENTER OF





MASTER OF PHILANTHROPY AND NONPROFIT LEADERSHIP

This new degree program is designed for professionals in the nonprofit and philanthropic field. Through coursework, applied research, a workshop series, professional development, and field experience our program will develop the knowledge and abilities needed for leadership in a fast changing world.

The MPNL curriculum is designed to prepare students to act ethically and effectively in leading and managing philanthropic and nonprofit organizations, and to transcend traditional boundaries in the pursuit of prosperous, safe, and healthy communities.



<https://www.gvsu.edu/spnha/>

THE FoundationReview

ORDER YOUR SUBSCRIPTION

DON'T MISS A SINGLE ISSUE!

ONLINE

Individual: \$80

Institution: \$290

Library: \$584

PRINT AND ONLINE

Individual: \$98

Institution: \$325

EASY WAYS TO ORDER

ONLINE

www.thefoundationreview.org

EMAIL

turpinna@turpin-distribution.com

PHONE

860-350-0041

The Foundation Review is published quarterly by the Johnson Center for Philanthropy at Grand Valley State University in Grand Rapids, Mich.



JOHNSON CENTER

AT GRAND VALLEY STATE UNIVERSITY

AN ACADEMIC CENTER OF



**GRAND VALLEY
STATE UNIVERSITY**

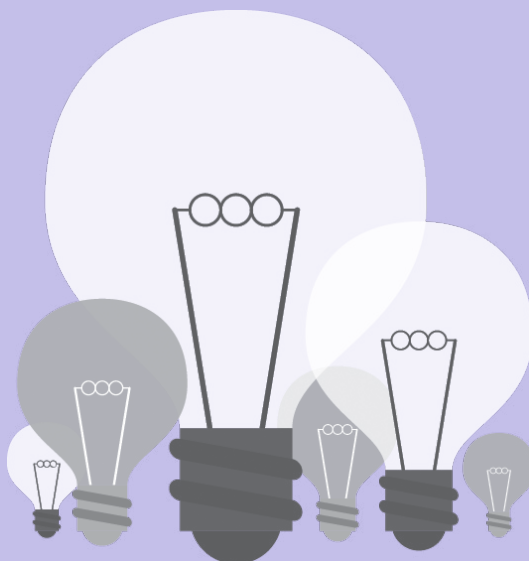
COLLEGE OF COMMUNITY
AND PUBLIC SERVICE

Dorothy A. Johnson Center for Philanthropy

TRUSTED GUIDANCE FOR DOING GOOD

Philanthropy is changing faster than ever. We believe learning curves shouldn't get in the way of impact. We guide foundations, nonprofits, professionals, and donors to strengthen their work and navigate the field. With original research, tools, trainings, and more, we can help you find trusted guidance for doing good.

Learn more at www.johnsoncenter.org.



JOHNSON CENTER

AT GRAND VALLEY STATE UNIVERSITY



AN ACADEMIC CENTER OF:

**GRAND VALLEY
STATE UNIVERSITY**

www.gvsu.edu

"What Is Philanthropy?" is by far the most definitive and well-produced presentation in video format on the subject of the practice of philanthropy." – *Journal of Nonprofit Education and Leadership*

"This movie was a huge eye opener for me. I never realized how much you can do with a philanthropist attitude." – Sam, High School student, Muskegon, MI

"I was impressed first with the magnitude of the project and then because philanthropy was presented with a diverse, inclusive and broad focus." – Michele Kimmel-Fors, Executive Director, COMPASS

"Many different vignettes included about ways people are giving and making a difference. Kudos for producing something really valuable and useful!" – Ira Silver, Professor of Sociology, Framingham State University



IF YOU THINK YOU KNOW ABOUT GIVING, THINK AGAIN.

What is Philanthropy?

A DOCUMENTARY BY SALVATORE ALAIMO

THOUGHT PROVOKING FILMS PRESENTS "WHAT IS PHILANTHROPY?"

DIRECTOR OF PHOTOGRAPHY: SALVATORE ALAIMO EDITED BY JASON WOODS

WITH MUSIC FROM ZIGGY MARLEY, PATTI SMITH, PETER KAUKONEN & MIKE KILLEEN

EXECUTIVE PRODUCER: SALVATORE ALAIMO PRODUCED BY SALVATORE ALAIMO ASSOCIATE PRODUCER: CYNTHIA KAY



www.whatisphilanthropy.org



THE **FoundationReview**

www.thefoundationreview.org

Our mission: To share evaluation results, tools, and knowledge about the philanthropic sector in order to improve the practice of grantmaking, yielding greater impact and innovation.



JOHNSON CENTER
AT GRAND VALLEY STATE UNIVERSITY



**GRAND VALLEY
STATE UNIVERSITY**
www.gvsu.edu