

4-23-2014

Police Incidents in Good Samaritan Ministry Neighborhoods

Veronica Burt
Grand Valley State University

Patrick Herta
Grand Valley State University

Follow this and additional works at: <https://scholarworks.gvsu.edu/honorsprojects>

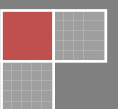
ScholarWorks Citation

Burt, Veronica and Herta, Patrick, "Police Incidents in Good Samaritan Ministry Neighborhoods" (2014).
Honors Projects. 281.
<https://scholarworks.gvsu.edu/honorsprojects/281>

This Open Access is brought to you for free and open access by the Undergraduate Research and Creative Practice at ScholarWorks@GVSU. It has been accepted for inclusion in Honors Projects by an authorized administrator of ScholarWorks@GVSU. For more information, please contact scholarworks@gvsu.edu.

2014

Police Incidents in Good Samaritan Ministry Neighborhoods



Introduction

This document tries to answer the following questions:

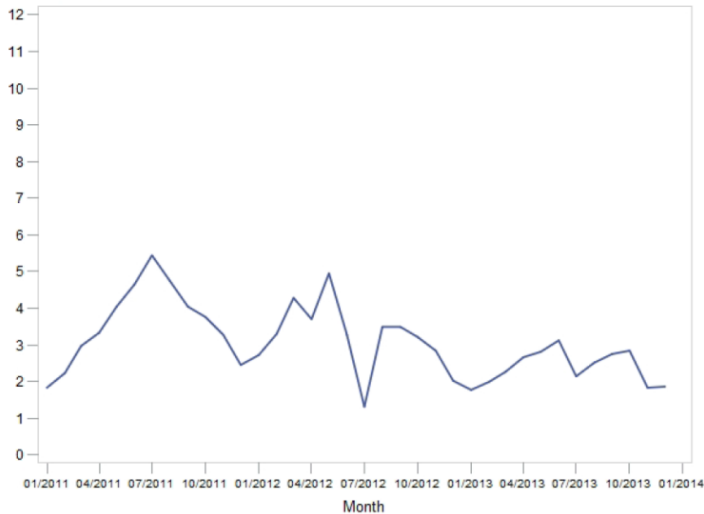
- 1) Does [site] have a problem with police incidents?
- 2) How does [site] compare to the city?
- 3) How can [site] improve?

Note: Throughout this document, any reference to “Holland City”, “Holland Township”, or “Zeeland” is understood to mean the municipality *excluding* any GSM neighborhoods that exist within its borders. Thus, “Holland City” means the city of Holland, excluding any neighborhood connection sites.

Police Incidents per 100 People

REGION=EAST CENTRAL

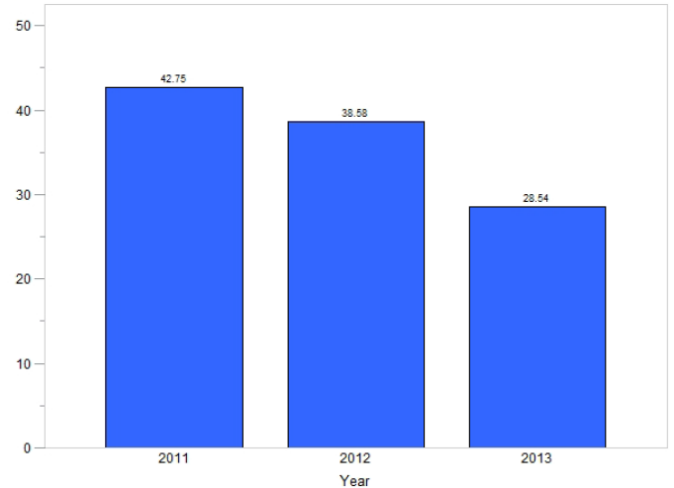
Police Incidents per 100 People



Police Incidents Per 100 People

REGION=EAST CENTRAL

Police Incidents per 100 People

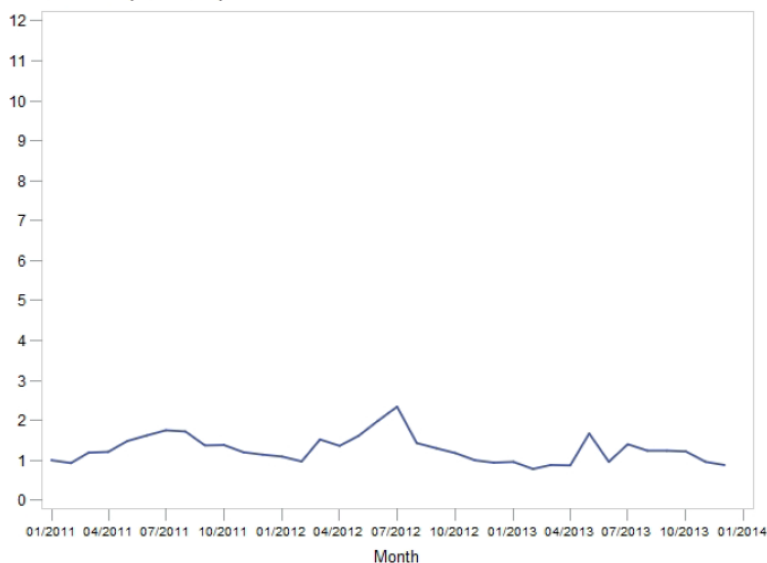


- **East Central experienced an initial decline in police incidents per 100 people in 2012, the year after GSM began actively working in the area.** East Central is also the only neighborhood that **continued the decline** in the following year. In 2011, before Neighborhood Connections began in East Central, the neighborhood had 42.75 police incidents per 100 people but after 2 years of Neighborhood Connections activity, the police incidents per 100 people has decreased to 28.54.
- **In general, East Central appears to have roughly double the number of police incidents per month as the city of Holland.** In 2011, there were 42.75 police incidents per 100 residents as compared to only 15.99 in the city. In 2013, the neighborhood experienced 28.54 incidents per 100 people compared to only 13 in the city. This pattern is also evident during the summer peak of 2013. The rate of incidents per 100 people is 2.14 for East Central, while the rate for Holland City is 0.96.

Police Incidents per 100 People

REGION=HOLLAND CITY

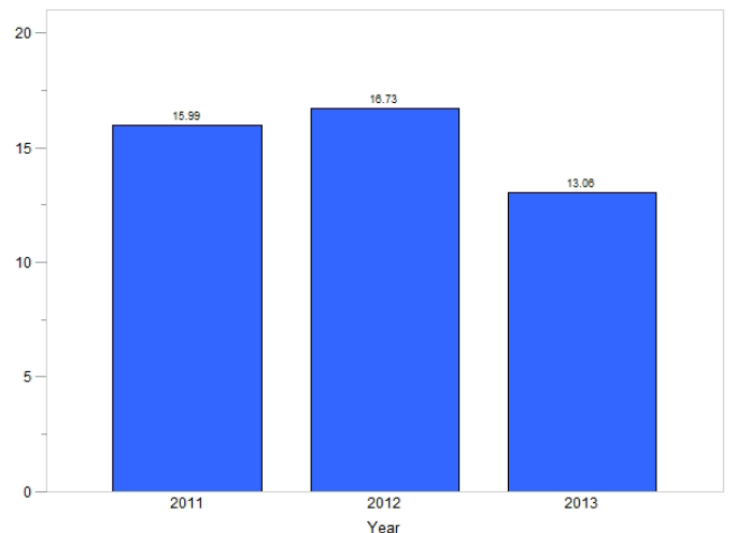
Police Incidents per 100 People



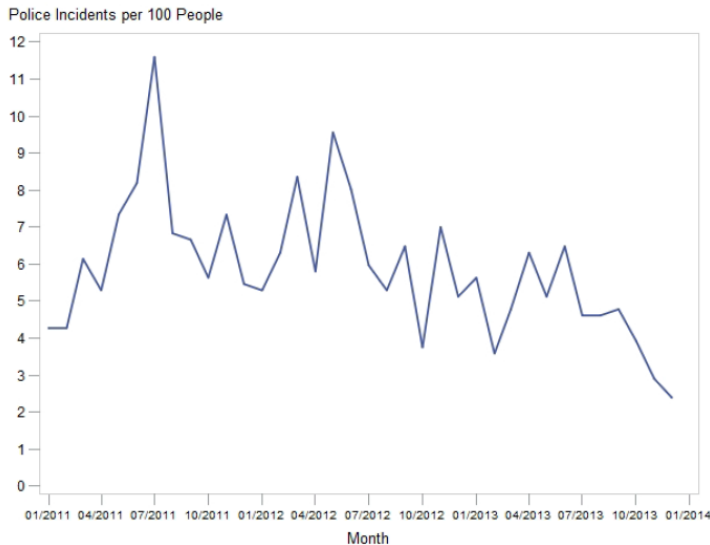
Police Incidents per 100 People

REGION=HOLLAND CITY

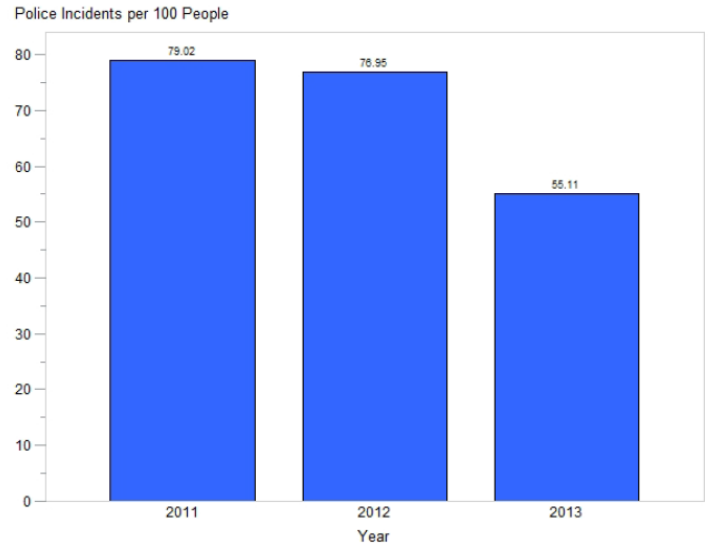
Police Incidents per 100 People



Police Incidents per 100 People
REGION=HEIGHTS OF HOPE

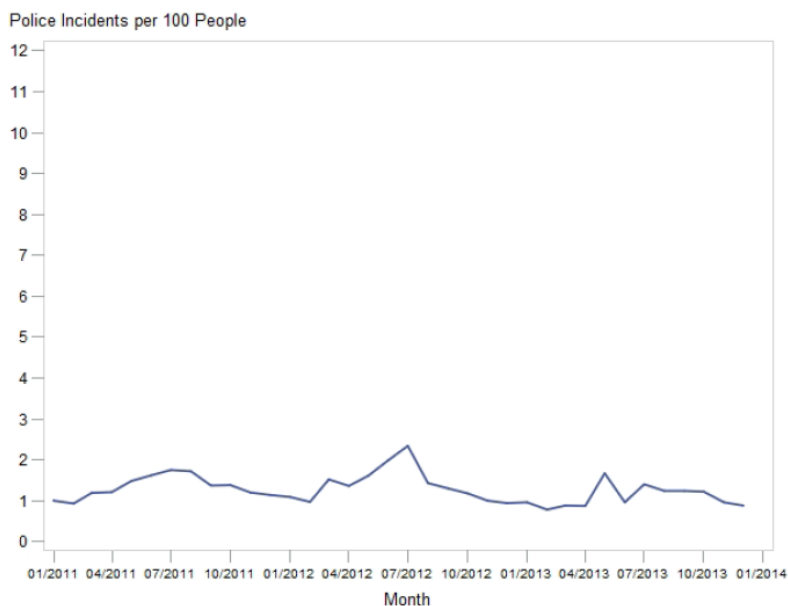


Police Incidents Per 100 People
REGION=HEIGHTS OF HOPE

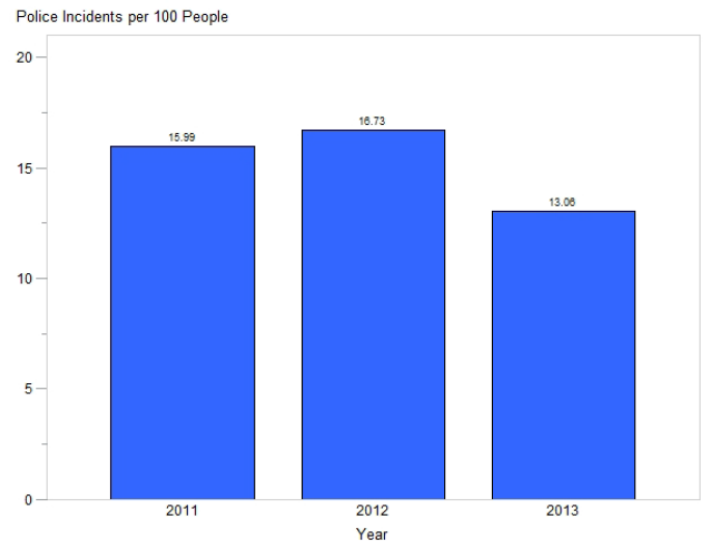


- The rate of police incidents per 100 people in Heights of Hope has steadily decreased in from 2011 to 2013, with a rate of 79.02 in 2011 and 55.11 in 2013
- Despite the rapid decline in incidents in Heights of Hope from 2011-2013, the rate of incidents per 100 people remains much higher in Heights of Hope than the rest of the city. In 2011, there were only 15.99 incidents per 100 people in the city compared to 79.02 in Heights of Hope. In 2013, the rate for the city declined to only 13 incidents per 100 people, but Heights of Hope experienced 55.11 incidents per 100 people in the same year.

Police Incidents per 100 People
REGION=HOLLAND CITY

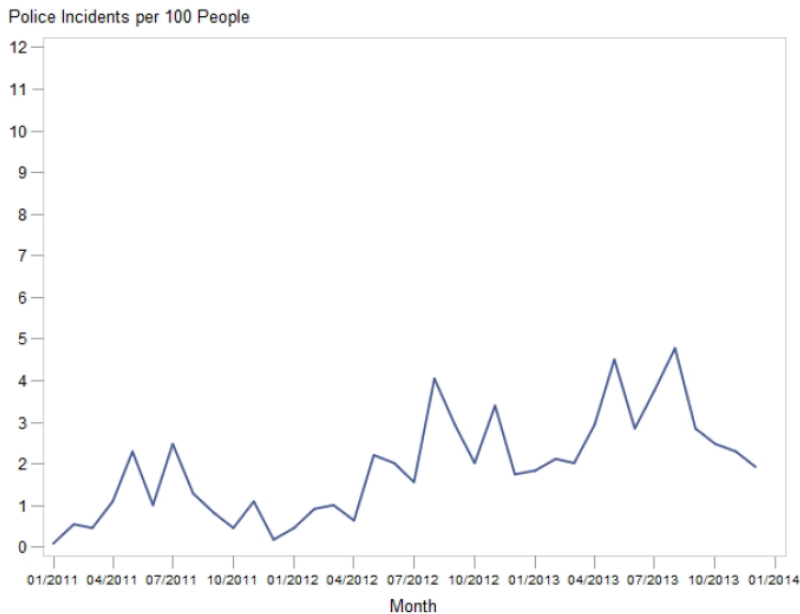


Police Incidents per 100 People
REGION=HOLLAND CITY



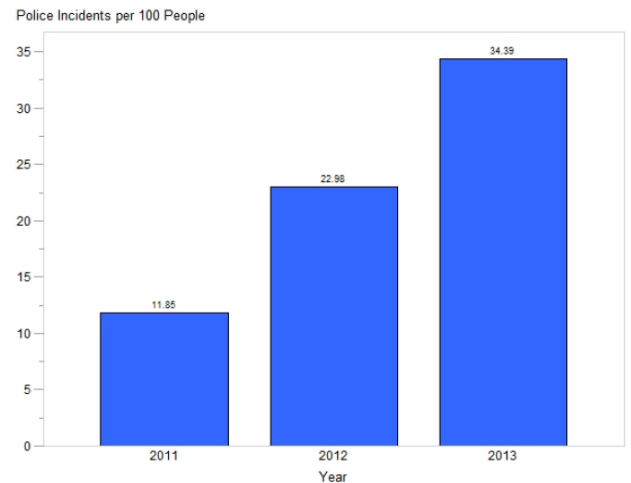
Police Incidents per 100 People

REGION=WASHINGTON



Police Incidents Per 100 People

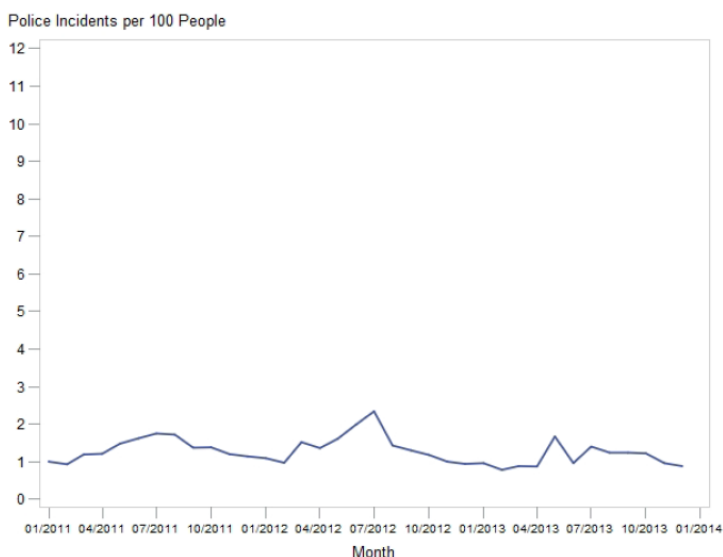
REGION=WASHINGTON



- **The Washington School neighborhood has experienced a steady increase in police incidents per 100 people since 2011. In 2011, there were 11.85 incidents per 100 people in Washington School Neighborhood, and, in 2013, this increased threefold to 34.39.** However, the increase in police incidents may be due to an increase in the willingness of neighbors to report crimes thanks to GSM encouragement and support. For example, the number of incidents listed as “miscellaneous criminal conduct” has increased from about 8% of total incidents in 2011 to over 25% of police incidents in 2013. This may reflect an increase in the number of times police came to investigate a *possible* crime as opposed to being called in after the fact to deal with a definite crime.
- As can be seen from the bar graph, although police incidents in Washington School has been on the rise since 2011, incidents in Holland city declined between 2011 and 2013. . In 2011, there were 15.99 incidents per 100 people in the city of Holland which decreased slightly to 13 incidents per 100 people in 2013. Notably, as mentioned above, there has been a threefold increase in police incidents in Washington School since 2011 which is also nearly three times the incident rate for the rest of the city of Holland.

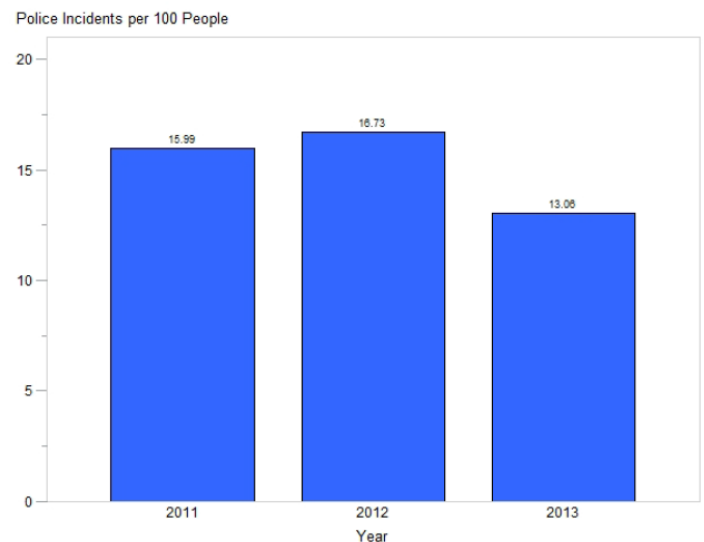
Police Incidents per 100 People

REGION=HOLLAND CITY



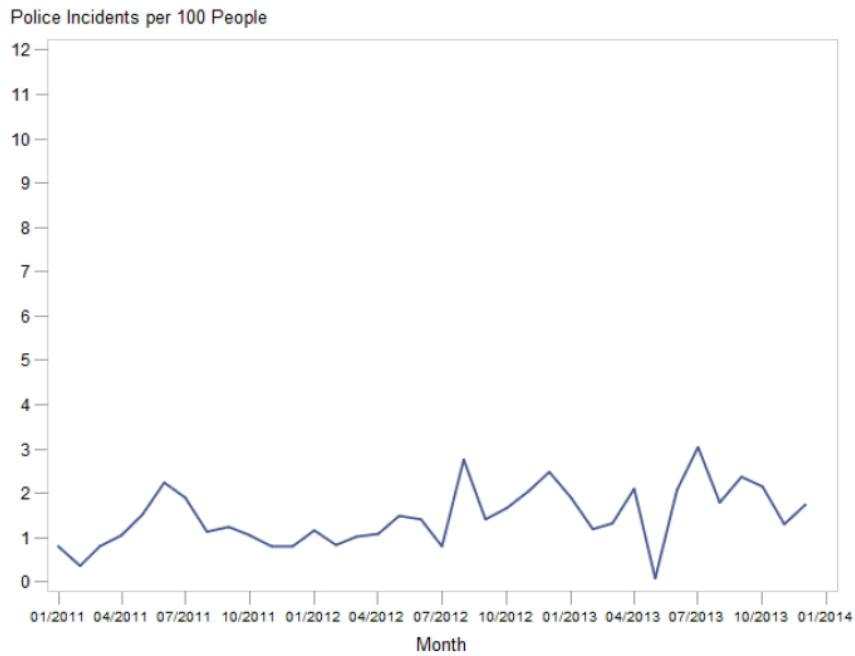
Police Incidents per 100 People

REGION=HOLLAND CITY



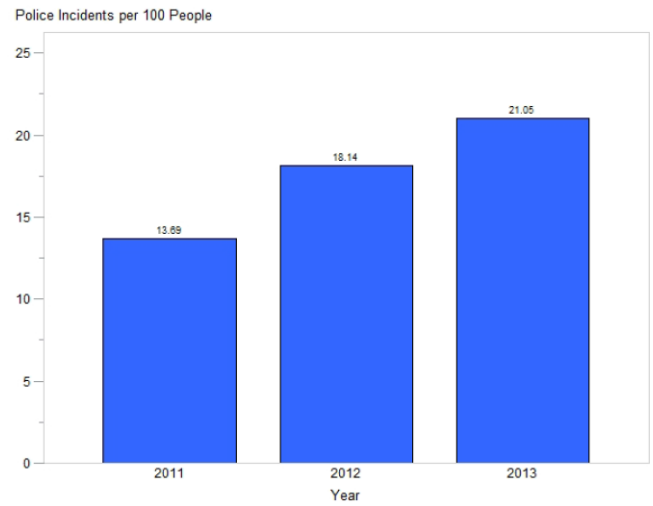
Police Incidents per 100 People

REGION=WESTCORE



Police Incidents Per 100 People

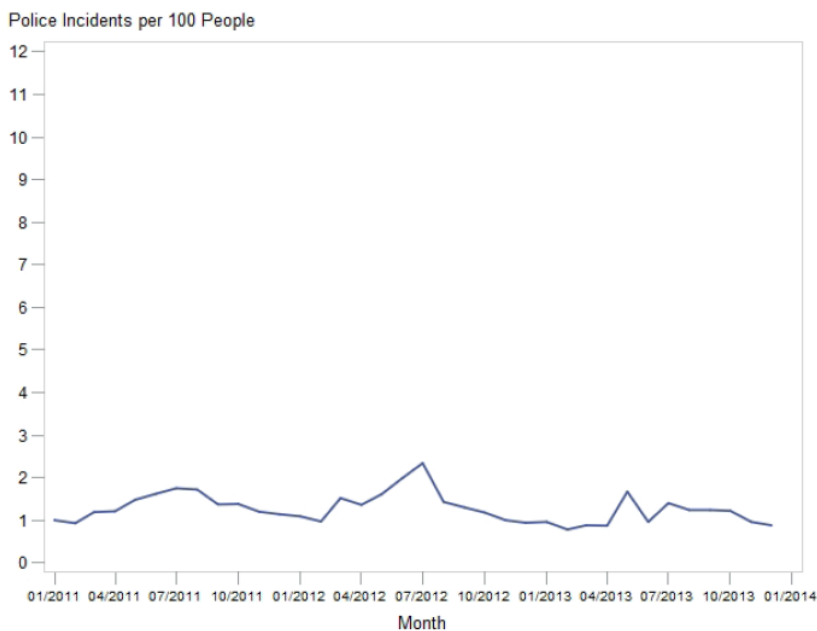
REGION=WESTCORE



- **Westcore experienced a steady increase in police incidents from 2011-2013.** In 2011, there were 13.09 incidents per 100 people in Westcore which increased significantly to 21.05 in 2013.
- **While Westcore had an incident rate slightly lower than that of the city in 2011, they have since exceeded the rate for the city.** In 2013, the city experienced 13.00 police incidents per 100 people, compared to 21.05 police incidents per 100 people in Westcore.

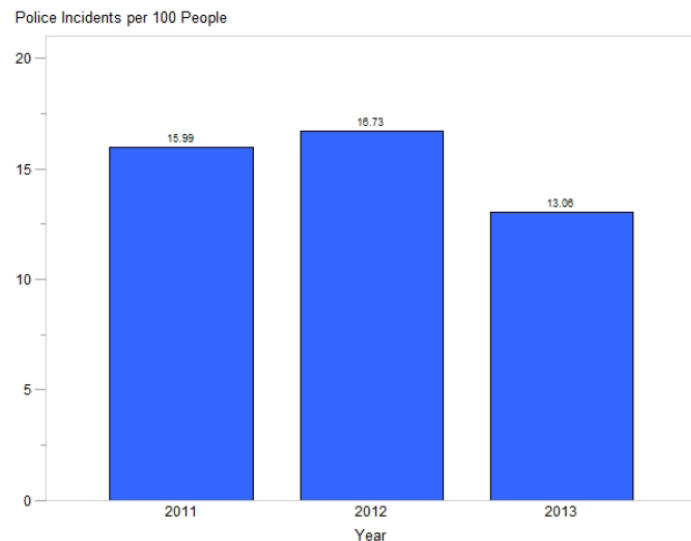
Police Incidents per 100 People

REGION=HOLLAND CITY



Police Incidents per 100 People

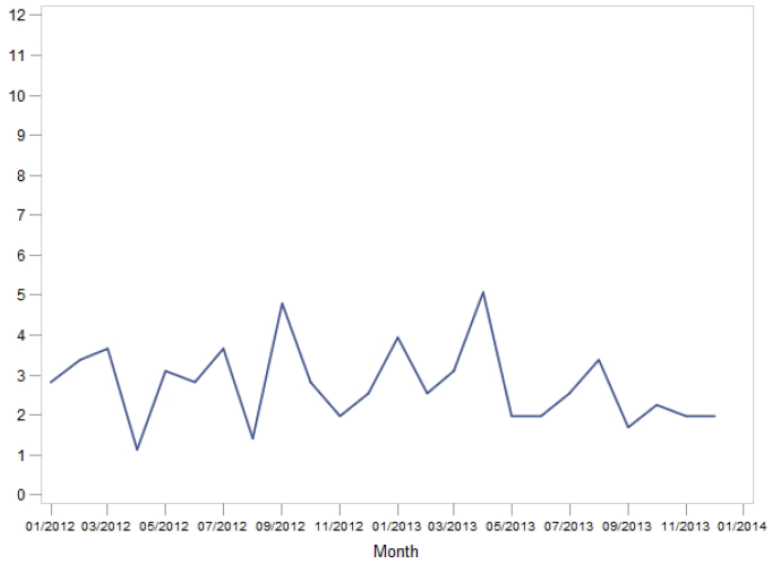
REGION=HOLLAND CITY



Police Incidents per 100 People

REGION=NORTHSIDE

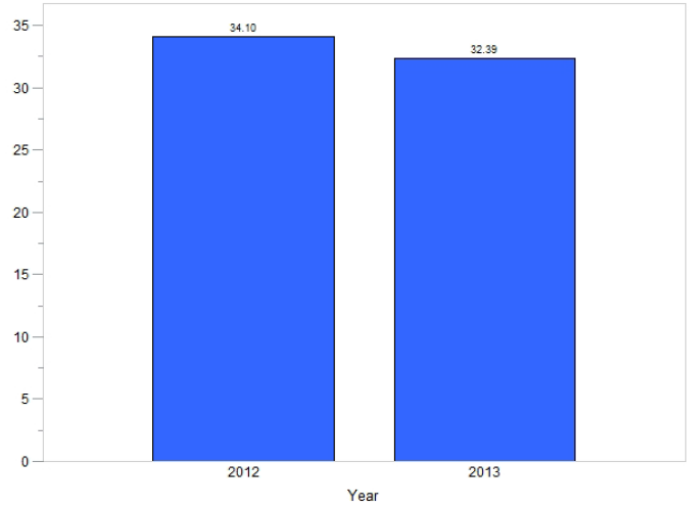
Police Incidents per 100 People



Police Incidents Per 100 People

REGION=NORTHSIDE

Police Incidents per 100 People

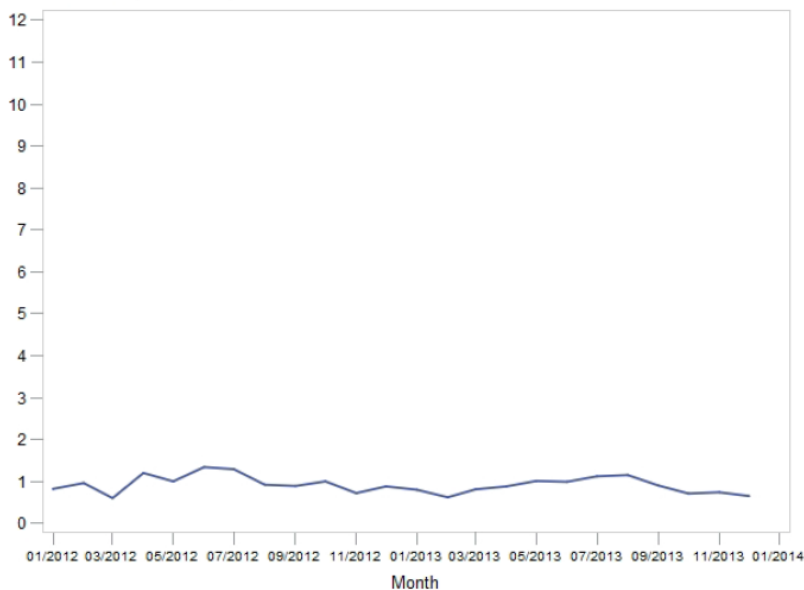


- **Police incidents per 100 people in Northside have remained relatively constant during 2012 to 2013, as has Holland Township, excluding neighborhood connection sites.** In 2013, the year after the introduction of GSM, there was no significant difference in crime total for either location.
- **However, the number of police incidents per 100 people in Northside is 3 times that of Holland Charter Township** in both 2012 and 2013. In 2012, there were 34.1 incidents per 100 people in the Northside Neighborhood as compared to only 11.02 in Holland Charter Township. In 2013, there was a rate of 32.39 incidents in Northside compared to only 10.38 in Holland Charter Township.

Police Incidents per 100 People

REGION=HOLLAND TOWN

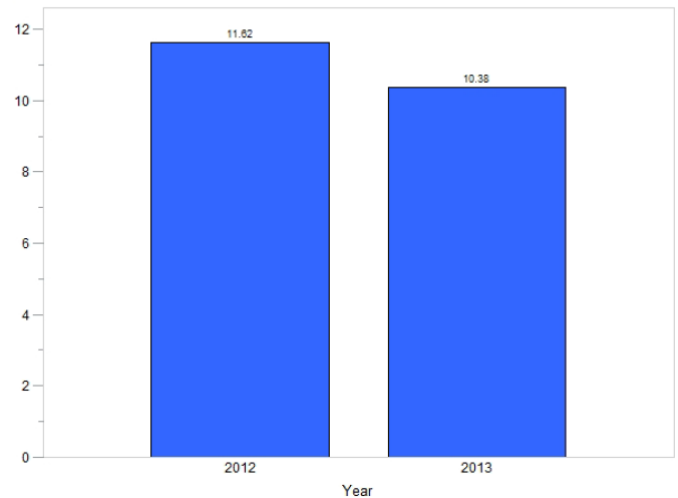
Police Incidents per 100 People



Police Incidents per 100 People

REGION=HOLLAND TOWN

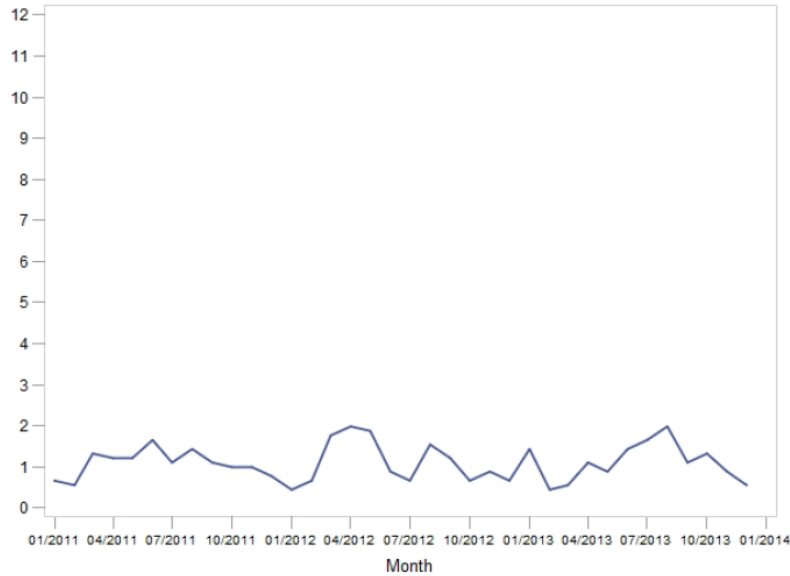
Police Incidents per 100 People



Police Incidents per 100 People

REGION=MCKINLEY

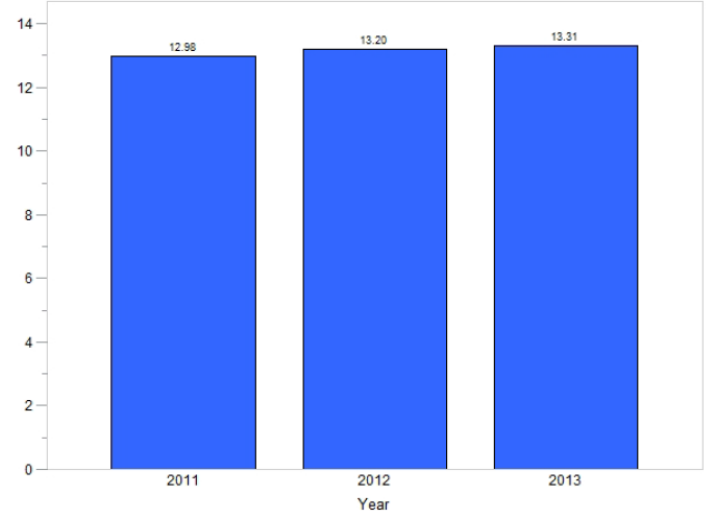
Police Incidents per 100 People



Police Incidents Per 100 People

REGION=MCKINLEY

Police Incidents per 100 People

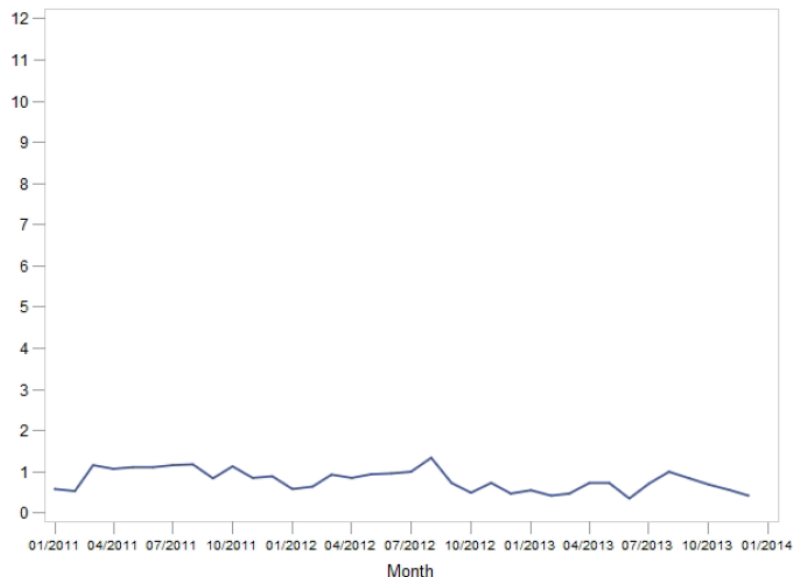


- **Police incidents per 100 people in McKinley remained relatively constant from 2011 to 2013, while police incidents in Zeeland City, excluding neighborhood connection sites, have decreased.** In 2011, there were 12.98 incidents per 100 people in McKinley and, in 2013, there were 13.31 incidents per 100 people. However, in 2011, the city of Zeeland experienced 11.01 incidents per 100 people while in 2013 the rate of police incidents decreased to 7.47.
- Overall, while the number of police incidents per 100 people in McKinley was very close to that of the city in 2011, this is no longer the case. In 2013, the city of Zeeland saw a decrease in police incidents per 100 people (to 7.47), but the rate in McKinley has remained relatively unchanged at 13.31 – nearly double the rate of the city.
- It can be seen from the graphs that police incidents per 100 people in Zeeland are decreasing over time, while police incidents per 100 people in McKinley are remaining constant.

Police Incidents per 100 People

REGION=ZEELAND

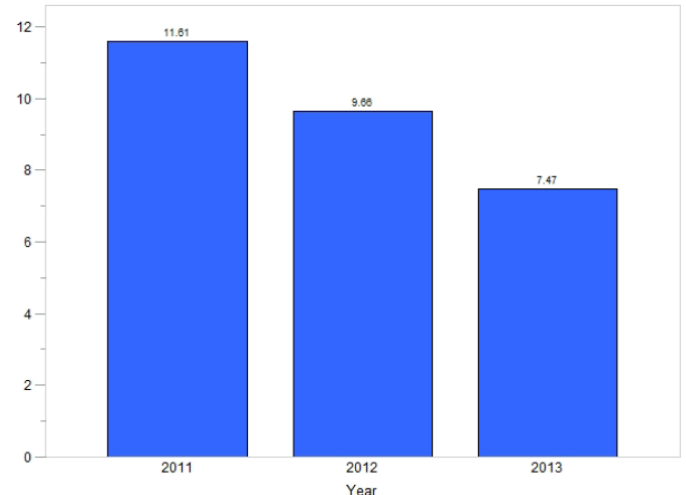
Police Incidents per 100 People



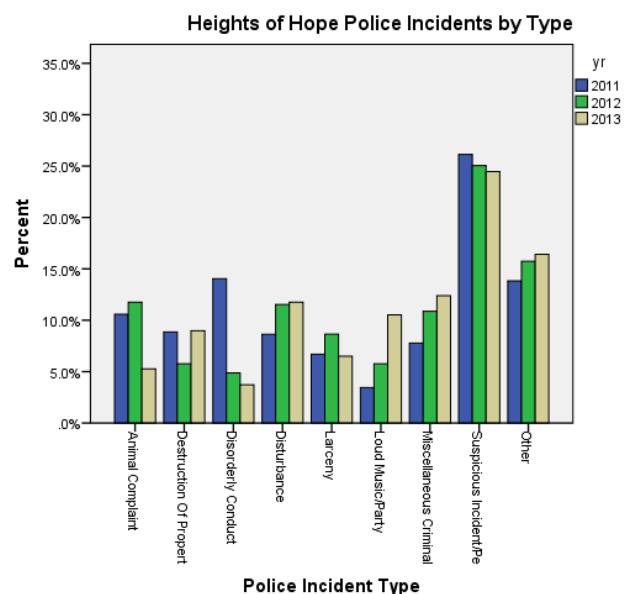
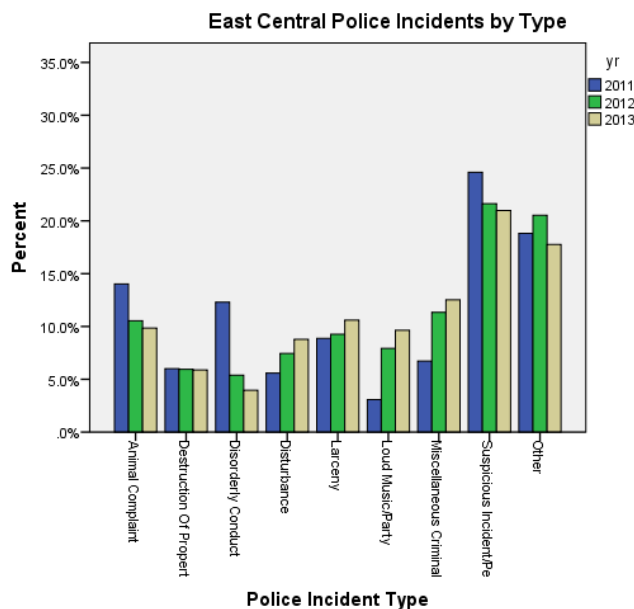
Police Incidents per 100 People

REGION=ZEELAND

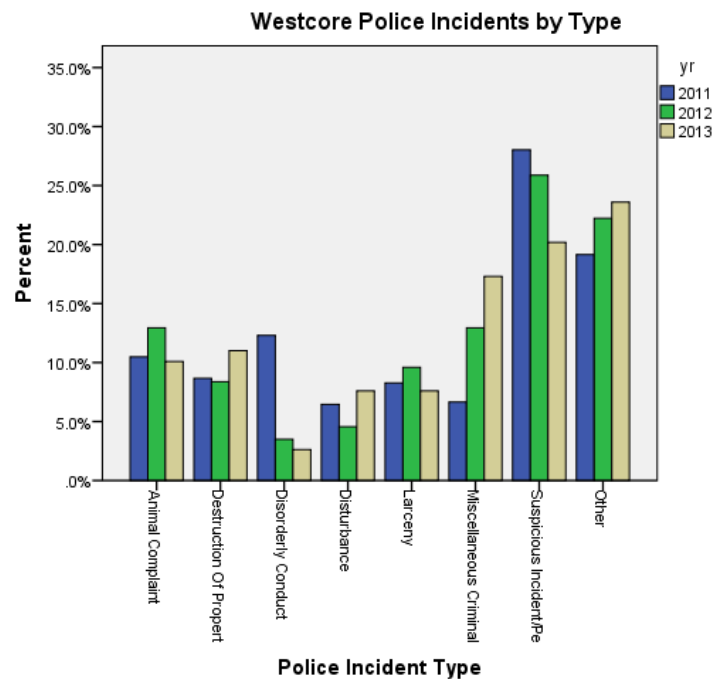
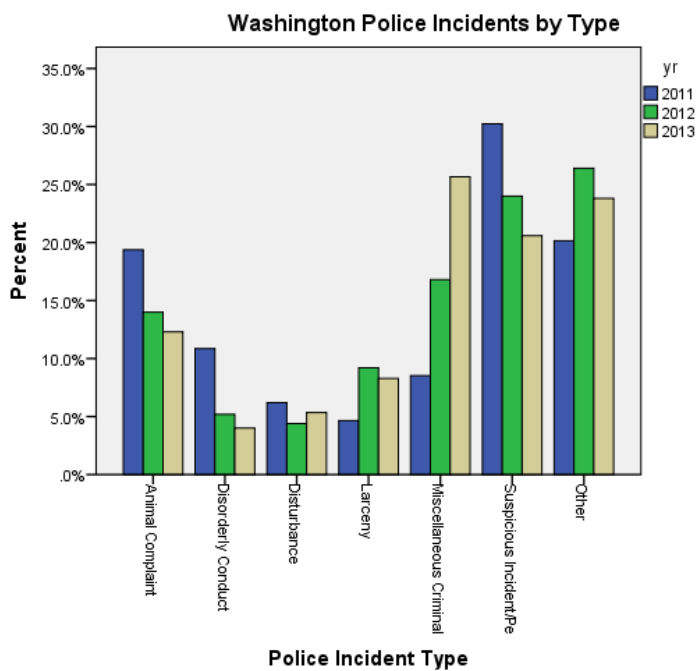
Police Incidents per 100 People



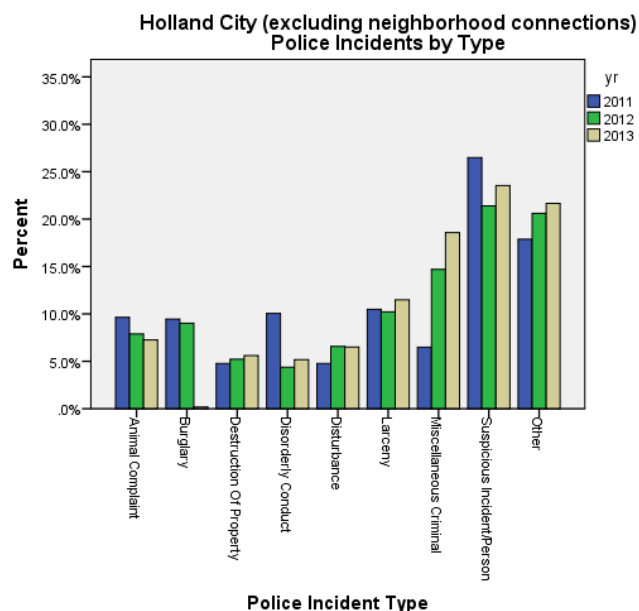
- The following graphs show the relative proportion of different types of police incidents that occur in the neighborhoods. Most noticeably, **“suspicious activity” is the most prevalent type of incident** in all neighborhoods and the municipalities. All incident types seem to be increasing over time in Holland except for Disorderly Conduct and Suspicious Incidents. In Holland Charter Township, all types of incidents appear to be decreasing over time, except for suspicious incidents, miscellaneous incidents, and destruction of property. In Zeeland, all incidents appear to be decreasing except for miscellaneous criminal which is increasing. Overall, the patterns between the neighborhoods are very similar to that of the city. Noteworthy distinctions will be outlined here.

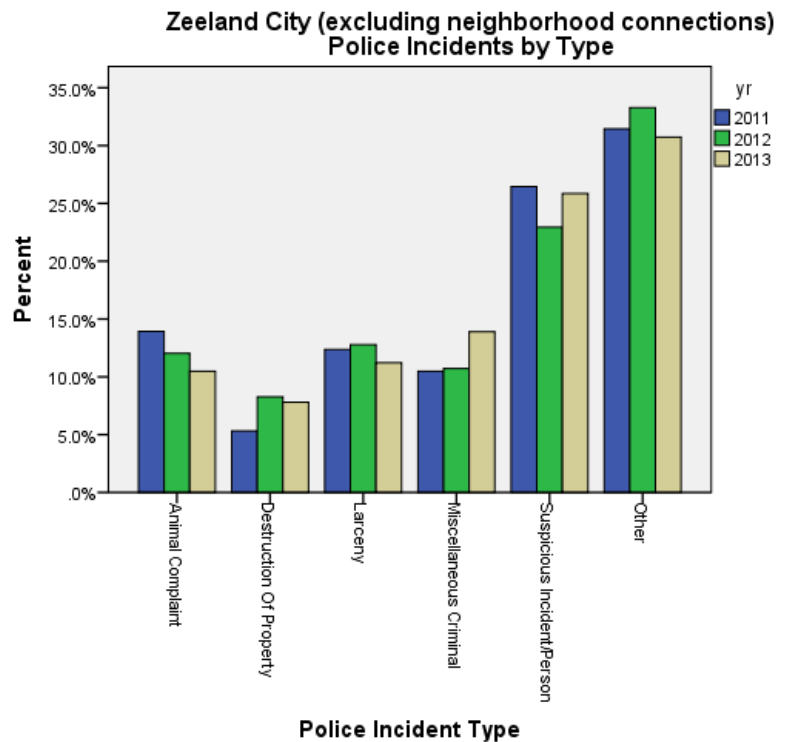
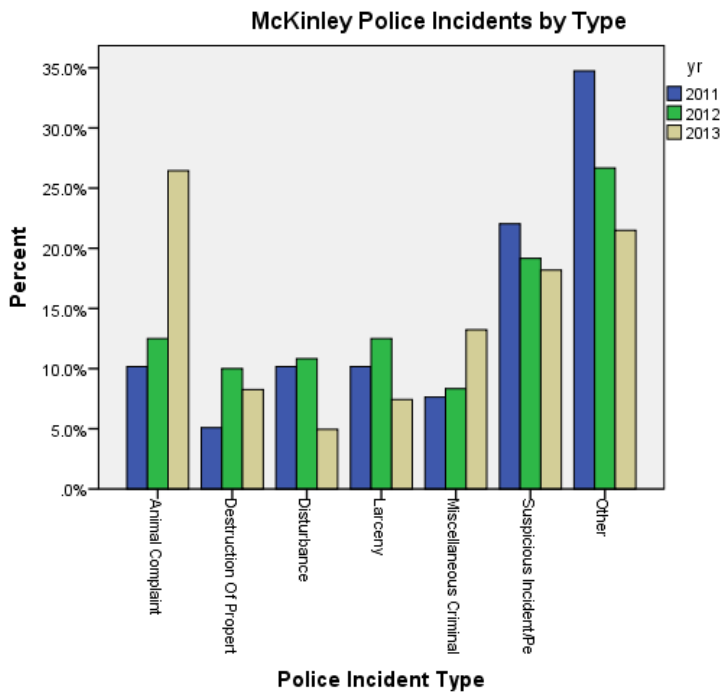


- Animal complaints, although not usually criminal in nature, are considered a safety concern by residents of Good Sam neighborhoods. Animal complaints have been decreasing since 2011 in both East Central and the city of Holland. However, **there is greater incidence of animal complaints in East Central**. In 2011, animal complaints made up only 10% of total incidents in Holland while they accounted for nearly 15% in East Central. In 2013, the city saw it decrease slightly to 8-9% but in East Central animal complaints still make up at least 10% of the incidents.
- The patterns of incidents in Heights of Hope differs quite a bit from the city of Holland. Suspicious incidents are still the most prevalent incident type by far. However, **miscellaneous incidents, larcenies, disorderly conduct, and animal complaints occur less frequently in Heights of Hope** than in the city. For example, larcenies account for greater than 10% of incidents in the city in 2013, but are only 6-8% of incidents in Heights of Hope in 2013. Likewise, miscellaneous incidents account for nearly 20% of incidents in 2013, but little more than 10% in 2013 in Heights of Hope. Notably, while disorderly conducts have decreased in both the city and Heights of Hope since 2011, Heights of Hope saw these incidents reduced from nearly 15% to less than 5% of total incidents. In the city, disorderly conducts only decreased from 10% of the total to 5%.



- As stated previously, the proportion of total incidents that are categorized as **miscellaneous** has **increased significantly in Washington School Neighbors** since 2011 from less than 10% to nearly 25%. The city also saw an increase in miscellaneous incidents however, they have not gone above 20% of the total incidents. Both **larceny** and **disturbances** have increased in the city since 2011, but **have decreased in Washington School Neighbors**. **Animal complaints have decreased** in both Holland and Washington School Neighbors, but the incidents in Washington School remain much higher than the city. From 2011- 2013, the percent of total incidents that are animal complaints for the city never goes above 10% while the percent for Washington School never goes below 10%.
- In the city of Holland, the proportion of incidents of larceny has remained very close to 10% increasing only slightly from 2011-2013. However, in **Westcore, larcenies have decreased slightly from 2011 and have never exceeded 10% of the total**. Incidences of **destruction of property** in the city have remained close to 5% of the total since 2011, but in Westcore, these incidents have **increased from just below 10% to just above 10%**. Disorderly conduct incidents have decreased in both Westcore and the city, but **Westcore saw a much more significant decrease in disorderly conducts**. In the city, disorderly conduct incidents decreased by only 5% whereas, in Westcore, they decreased by nearly 10%.





- In McKinley, the proportion of incidents labeled as “animal complaints” has increased significantly since 2011 from approximately 10% to roughly 25% of the total incidents. In the city of Zeeland, animal complaints have decreased and have never been greater than 10% of the total. Larcenies have decreased in both Zeeland and the McKinley neighborhood; however, **larcenies have never accounted for greater than 10% of the incidents in McKinley** and have never been fewer than 10% in Zeeland.
- Northside has seen a significant increase in the proportion of incidents labeled destruction of property and disturbance. In Holland Charter Township, the proportion of incidents that are destruction of property or disturbances have changed only slightly since 2012 and have never been greater than 10%. However, in **Northside Neighbors, both destruction of property incidents and disturbances have increased significantly** from 2012-2013 to between 15-20%. On the other hand, **miscellaneous criminal incidents have never been below 10% in Holland Charter Township, but have never been greater than 10% in Northside Neighbors.** This may be due to the fact that Northside Neighbors entirely consists of a single apartment complex. This may mean that residents are more likely to know the residents involved and, therefore, more likely to be specific about the problem when calling the police.

