

1988

Contributors

Follow this and additional works at: <https://scholarworks.gvsu.edu/gvr>

Recommended Citation

(1988) "Contributors," *Grand Valley Review*. Vol. 4: Iss. 1, Article 25.

Available at: <https://scholarworks.gvsu.edu/gvr/vol4/iss1/25>

This Article is brought to you for free and open access by ScholarWorks@GVSU. It has been accepted for inclusion in Grand Valley Review by an authorized editor of ScholarWorks@GVSU. For more information, please contact scholarworks@gvsu.edu.

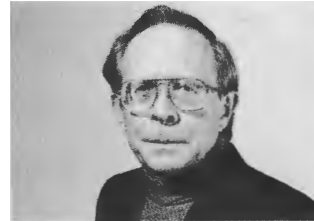
Contributors

John Batchelder, Professor of Political Science, has been with Grand Valley since 1969. His interests are Western and Eastern Europe. Also, he regularly presides over a section of freshman composition, where he shares in the pain and pleasure of daring to write something in the English language.



Pat Bridges, Visiting Instructor with the English Department, is a poet now living in Grand Rapids. Before pursuing her graduate studies in Oregon, she received her B.S. from William James College in 1982.

William Buchanan has been adjuncting in various courses (Classical Civilization, Mythology, Freshman English, etc.) since 1986. He spent much of his academic career promoting a Great Books curriculum, but recently his major interest has become East-West dialogue.



Edward Cole has taught history at Grand Valley since 1971.

Ronald Dwelle, Associate Professor of English, has been a member of the department since 1969.





Thomas Herzog, Associate Professor of Psychology, has been doing research on environmental preferences since the early 70's. He has also published research on visual information processing, kinesthetic perception, and the psychology of humor.



Benjamin G. Lockerd, Jr., Assistant Professor of English, has taught at Grand Valley State since 1982. Last year Buchnell University Press published his book on Edmund Spenser's *Faerie Queene*.



Stephen Ford has been Library Director at Grand Valley since its inception. After thirty-nine years working in college and university libraries he will retire this year to the pleasures of his personal library.



Carl Kobernik is a member of the Foreign Language Department. He has made several trips to East Germany and was the director of the German study program in Weimar last summer.



Lynn Mapes, Professor of History, was the first director of Grand Valley's summer program in Aix-en-Provence, and will direct it again this year.

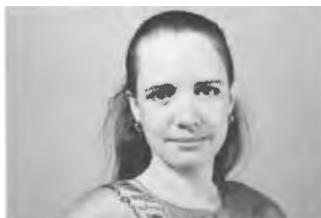
Stephen T. Margulis is the Eugene Eppinger/BIFMA Professor of Facilities Management at the Seidman School of Business. A frequent author and editor of technical publications, these are his first, but not his last, submissions of poetry.



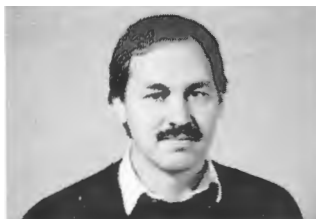
William Osborn joined the Grand Valley English Department in the Fall of 1988.



Mary Katharine Parks, formerly managing editor of the *Michigan Quarterly Review* and adjunct instructor in English at GVSU, is happy to be "home" again at Grand Valley, this time as Assistant Director of Admissions for Publications.



Jim Persoon, Assistant Professor of English, has moved to an office with windows since his last contribution to the *Grand Valley Review*, and it has made his poetry lighter.



Louise Peacock is a newly appointed visiting instructor in the English Department.





Margaret Proctor, Associate Professor of Communications at GVSU, has taught a course on Southern literature and teaches fiction writing.

Wayne Snyder, Professor of Economics, has been at Grand Valley since 1980, and his presently on leave in Aix-en-Provence

Beverly Seley, Associate Professor of Art, has been at Grand Valley since 1972.



Mindy Taylor has been an adjunct instructor in the English Department for the past several years.

Sharon Whitehill, Professor of English, graduated from GVSU in its early years and has been teaching in the English Department since 1970. She will be making her ninth trip to England next summer to lead the 1989 summer study abroad program.

