



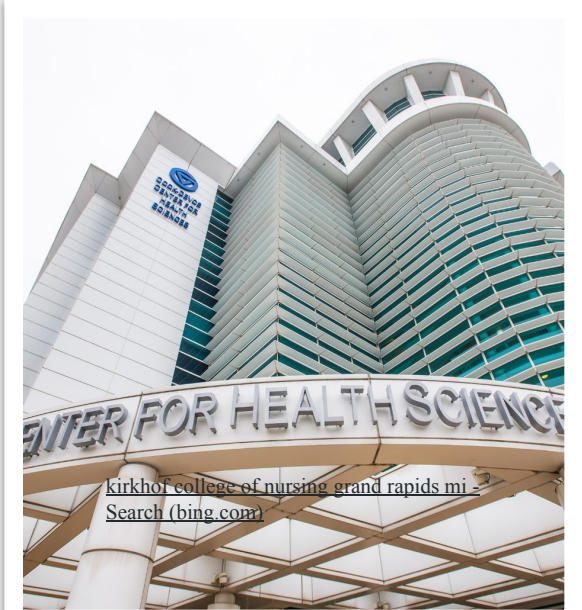
[life ems grand rapids - Search \(bing.com\)](#)



[kent county health department grand rapids mi - Search \(bing.com\)](#)

TANDEM365
CARE IS BETTER TOGETHER

[tandem365 grand rapids mi - Search \(bing.com\)](#)



[kirkhof college of nursing grand rapids mi - Search \(bing.com\)](#)

INTERPROFESSIONAL EDUCATIONAL WORKSHOP: IMPROVING EMERGENT CARE

Emily Farkas, Mia Fedon, Ashley Komosinski, Anna Preuss, Kaitlyn Rompala, Rebecca-Jean Rouwhorst, Marty O'Neill, & Jalen VanDyke

Turkey Mascot - Titus

**Kent County Health
Department
700 Fuller N.E.
Grand Rapids, MI**



**“To Serve, Protect,
and Promote a
Healthier
Community for All”**

**(Health Department Kent County Michigan, 2020,
para 1)**

KCHD OPERATIONAL GOALS

BLUE SECTIONS PERTAIN TO CAPSTONE

Decrease transmission of infectious disease

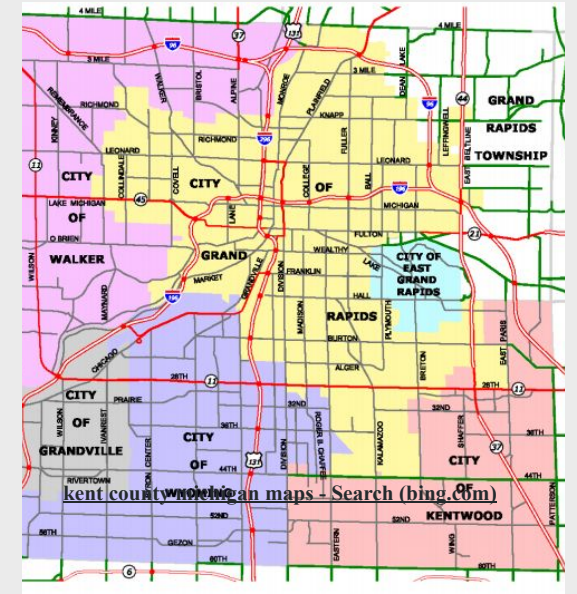
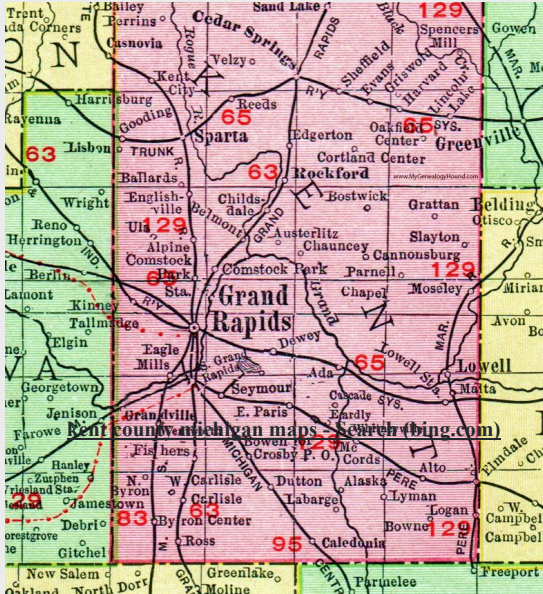
Improve health among women of childbearing age, pregnant individuals and children

Improve access to health care & reduce barriers

Reduce preventable illnesses, injuries, and deaths

Provide protection & education against vaccine-preventable diseases

Administer vaccines & provide assurance of effectiveness



WINDSHIELD SURVEY BOUNDARIES

CENTER: FULLER N.E.

EAST: EAST BELTLINE

SOUTH: 28TH STREET

WEST: GRANDVILLE AVE

NORTH: PLAINFIELD



[health kent county michigan - Search \(bing.com\)](#)

COMMUNITY CORE

HISTORY: NAMED AFTER JAMES KENT, NEW YORK SCHOLAR

History – Created 1831



(ada covered bridge ada michigan - Search (bing.com))

Organized 1836

Heritage Hill District

Ada Covered Bridge

Aldrich Building

Meyer May House

Mathias J. Alten House & Studio

COMMUNITY CORE DEMOGRAPHICS

Population 2022: 667,770

Annual Growth Rate: 0.54%

(worldpopulationreview.com/us-countries/mi/kent-county-population)

Males: 49.2%

Females: 50.73%

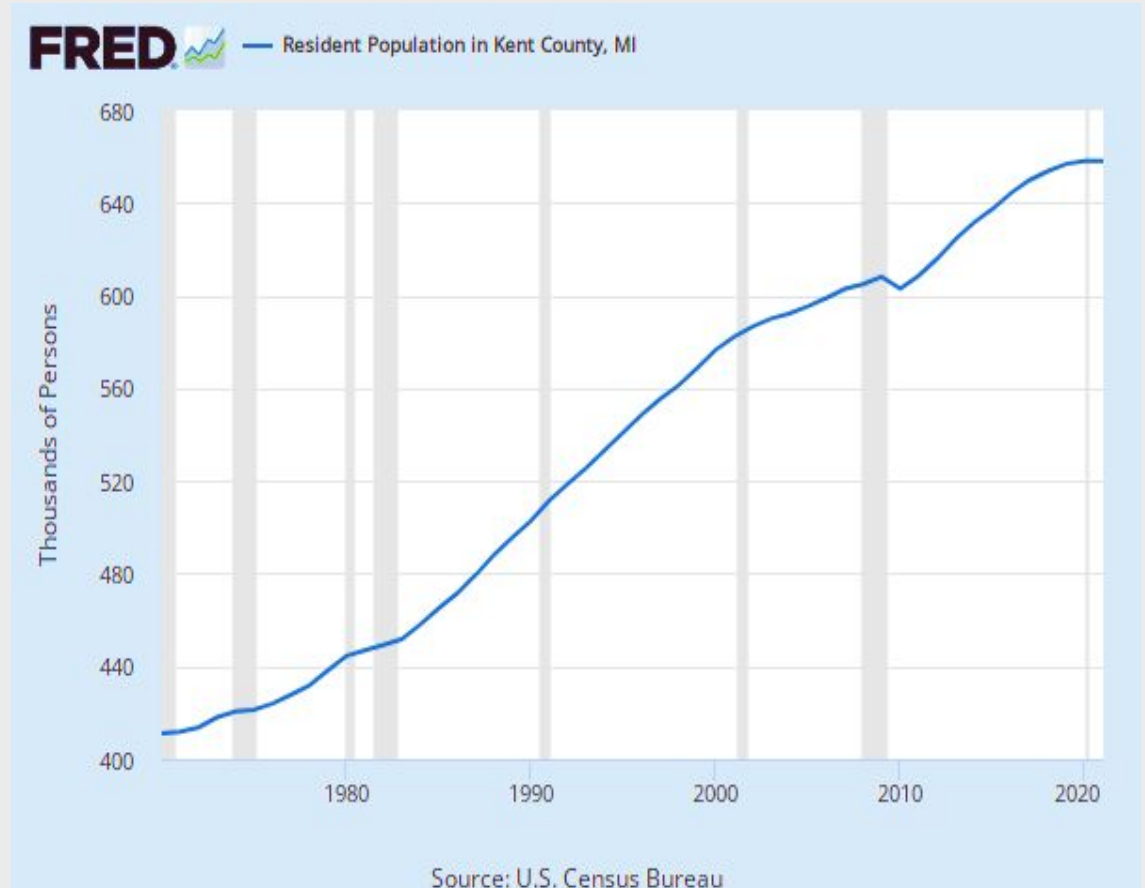
(United States Census Bureau, 2019)

Caucasian: 73.2%

Hispanic: 10.8%

Black African American: 10.7%

(<https://www.city-data.com/county/Kent-County-MI.html>)



COMMUNITY CORE ETHNICITY, VALUES & BELIEFS

European Ancestry:

- German – 20.5%
- Dutch - 18% (40% in 1990)
- Irish – 11%
- Polish – 7.7%

Hispanic Ancestry

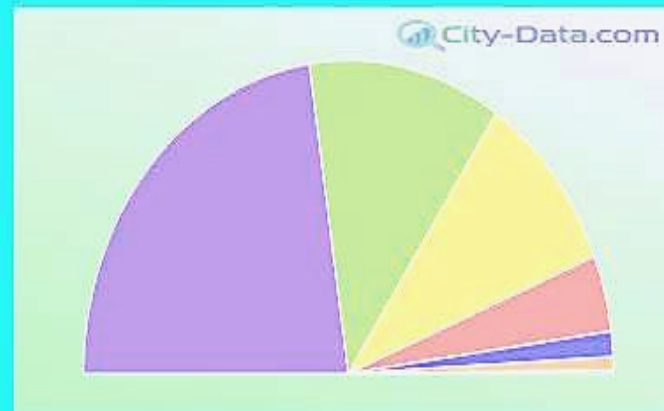
- Mexican – 65.1%

Asian Ancestry

- Vietnamese: 28.5%

Religions Adherents in 2010

Kent County, MI



- None (45.3%)
- Evangelical Protestant (23.5%)
- Catholic (19.0%)
- Mainline Protestant (7.9%)
- Other (2.6%)
- Black Protestant (1.4%)
- Orthodox (0.3%)

Places of Worship:

Cathedral of St Andrew
Ada Bible Church
St. Robert of Newminster
Fountain Street Church
Saint Nicholas Orthodox
Korean New Hope
Sunshine Community Church
Calvary Church

EIGHT SUBSYSTEMS OF A COMMUNITY

Physical

Health & Social Services

Economics

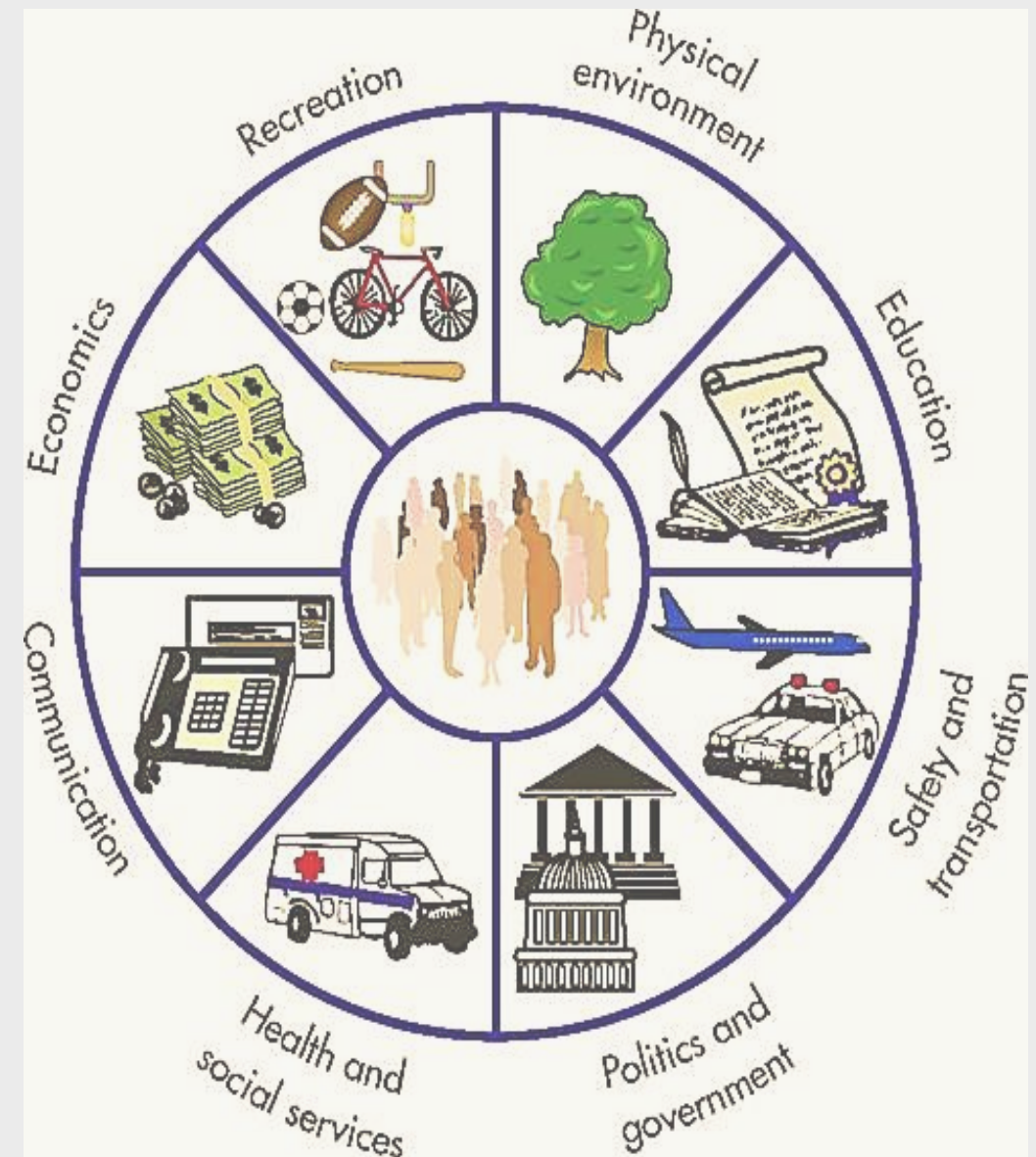
Safety & Transportation

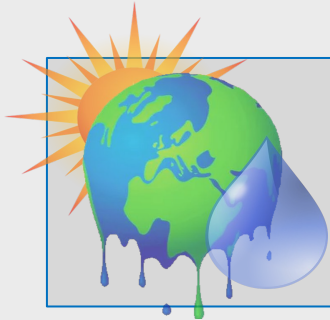
Politics & Government

Communication

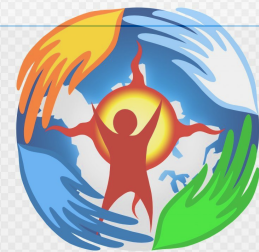
Education

Recreation





PHYSICAL ENVIRONMENT SUBSYSTEM



Area & Weather

Land area: 856 sq. mi.

☐ **847 sq. miles land** (21 Townships , 5 Villages, 9 Cities)

☐ **25 sq. miles water** (248 Lakes, Rivers, Streams)

BestPlace Comfort Index – 6.6 (US 7)

☐ **Snow**– per year 66”; US 28” average

☐ **Rain** – per year 37”; US 38” average

☐ **Nighttime below Zero** – 138.8 Days Annually

Risk Factors

Cancer Risk

☐ **Kent County** - 39.6 ;Michigan – 33.1

(Environmental Protection Agency, 2019).

Respiratory Illness Risk: Kent County – 32.1; Michigan – 27.5

Water Quality Index (1-100): 39 -Kent County; USA – 55

Lead Poisoning in Children:

Kent County – 3.5%; Michigan – 2.9%

Air Quality Index (1-100)

Kent County – 65; US - 58

(BestPlaces, 2019)

Health Subsystem

Health Behaviors

Average Life Expectancy

78.7; Other Dashboard – 79.1

COVID Risk Index - 2022

7; All Dashboard 5.5

Overdose Deaths

2020 – Increased 11%

(Hogan, 2021)

Opioid Deaths – Grand Rapids

20.4 per 100,000; Other Dashboard – 19.4

Premature Deaths per 100,000

All Causes – Grand Rapids:

9,200

7,759.4 Across all Dashboard cities

(City Health Dashboard, 2022)



[hospital kent county michigan - Search \(bing.com\)](https://www.bing.com/search?q=hospital+kent+county+michigan)

Physical Inactivity

43.7%; All Dashboard – 25.8%

Depression

22.9%; All Dashboard – 21.4%

Preventive Services 65+

31.4%; All Dashboard – 30.1%

Binge Drinking

21%; All Dashboard – 18.1%

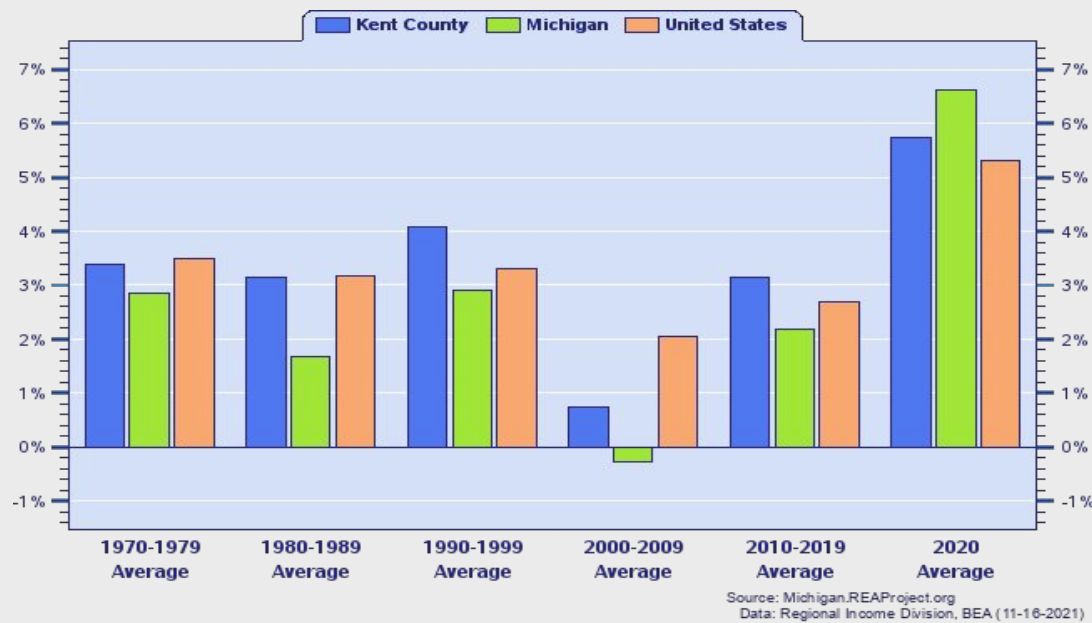
(City Health Dashboard, 2022)



HEALTH & SOCIAL SERVICES SUBSYSTEMS

Blodgett Spectrum & Butterworth Spectrum Campus
Helen DeVos Children's Hospital
University of Michigan Metro
Trinity Health Saint Mary's
Forest View & Pine Rest

ECONOMY SUBSYSTEM



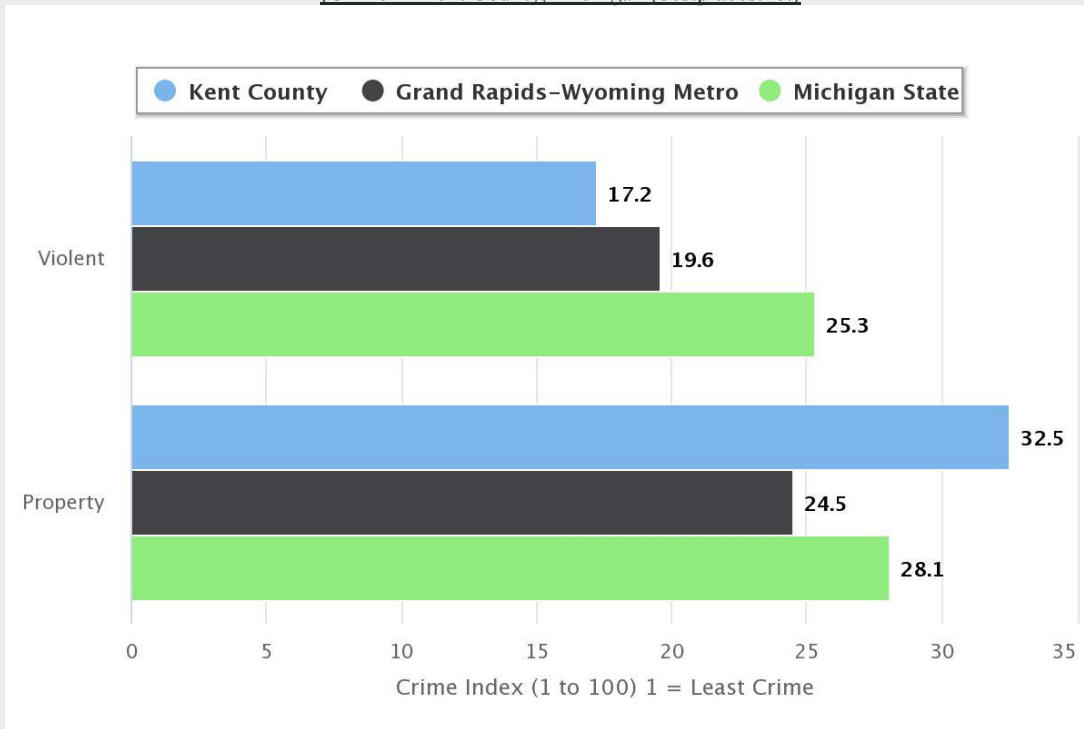
(United States Bureau of Labor Statistics, 2022)

2020 – Median Income - \$65,722;
Poverty 11.1%

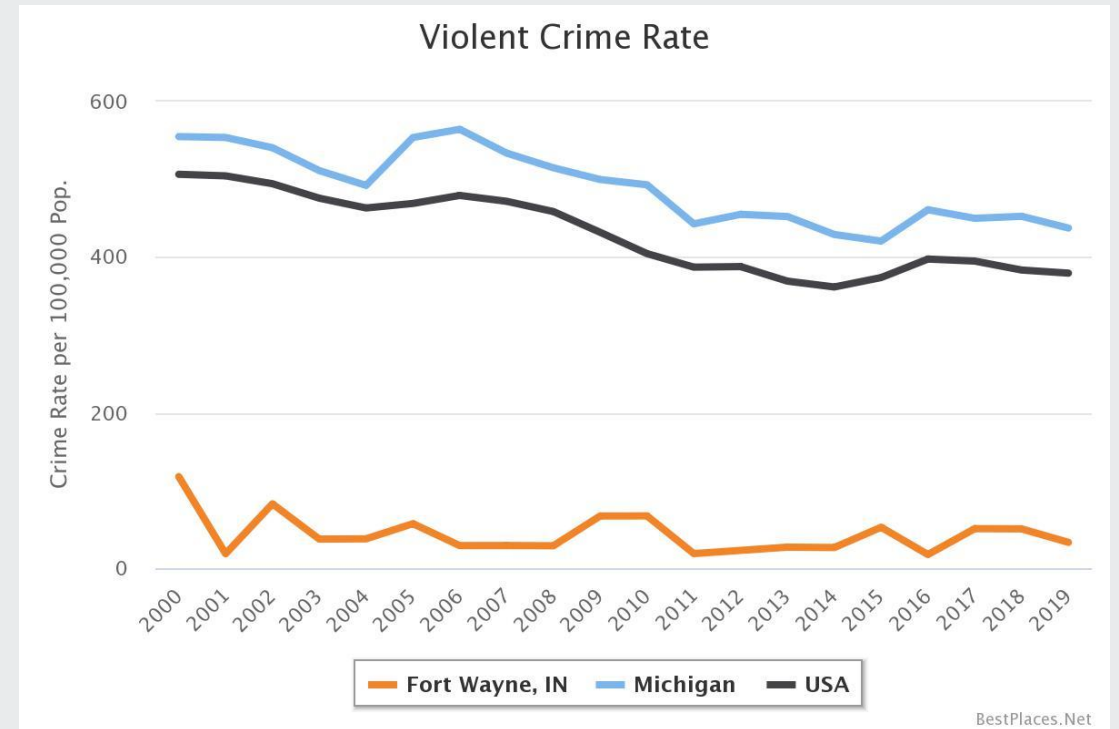
Unemployment Rate Kent County: May
2020 = 20%; August 2022 = 4.8%


SAFETY SUBSYSTEM

(Crime in Kent County, Michigan (bestplaces.net))



Sex Offender Ratio per 100,000:
Kent County – 51.36; US 18.13



Grand Rapids 2022  3,363 crimes -761 assaults; 15 homicides (Roelofs, 2022)

SAFETY SUBSYSTEM

Fire & Police

54 Fire Departments (FD)

- ❑ One FD per 11,784 people
- ❑ Ranked 80th out of 83 counties

16 Police Departments (PD)

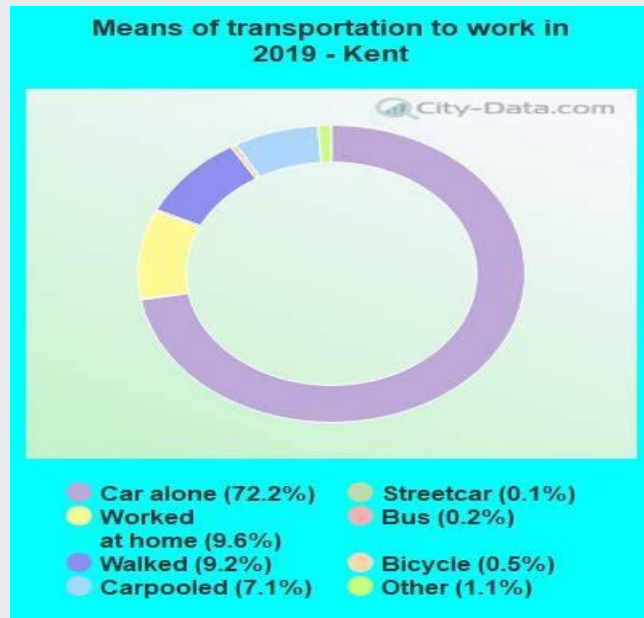
- ❑ One PD per 39,773 people
- ❑ Ranked 75th out of 83 counties

Kent County Sheriff's Department



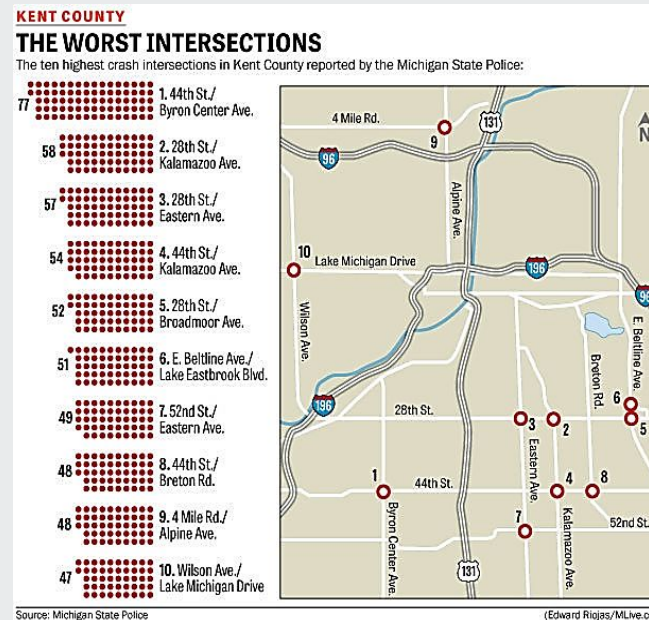
TRANSPORTATION SUBSYSTEM

Means of Transportation



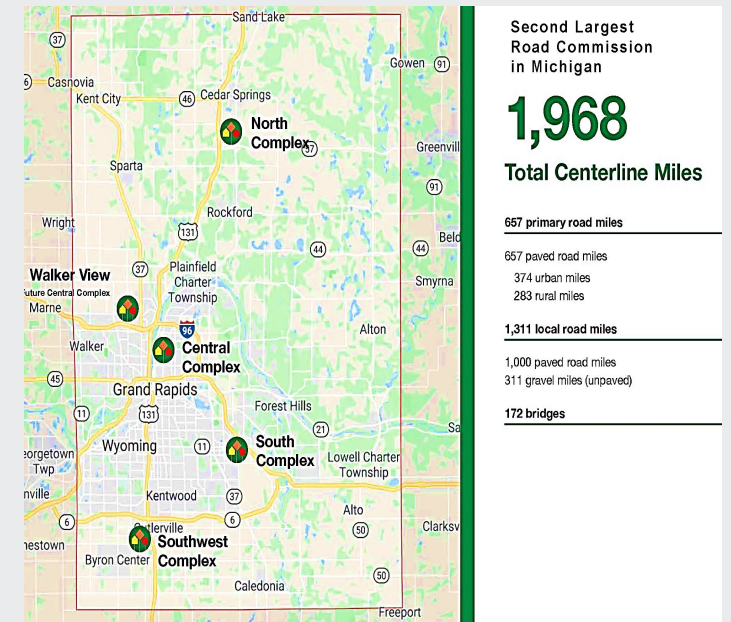
[means of transportation kent county michigan - Search \(bing.com\)](#)

Worst Intersections



[intersections in kent county michigan - Search \(bing.com\)](#)

2nd Largest Road Commission



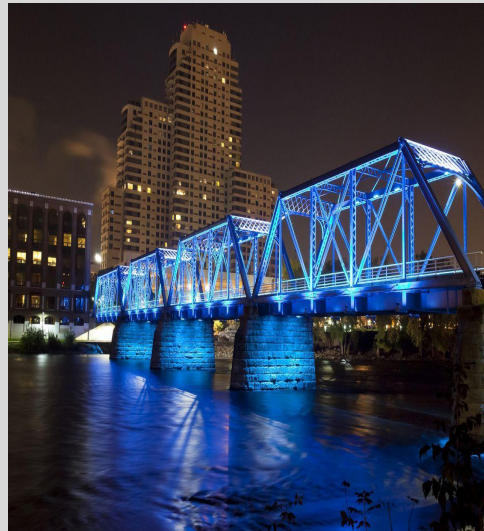
[transportation systems in kent county michigan - Search \(bing.com\)](#)

TRANSPORTATION SUBSYSTEM



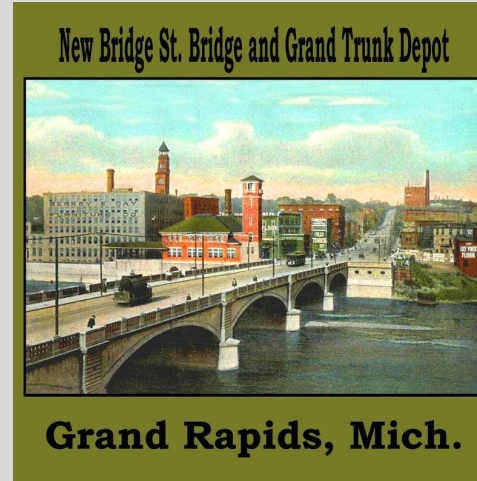
Eleven Airports

[kent county michigan airport - Bing images](#)



515 Bridges

<https://www.bing.com/images/search?view=detailV2&ccid=kUCJUIiQ&id>



Five Rail Trails

[List of rail trails in Michigan - Wikipedia](#)



Bus Lines

[laker line gvsu - Bing images](#)

POLITICS & GOVERNMENT SUBSYSTEM

Elected Officials

Mayors: 3 Offices

Grand Rapids: Rosalynn Bliss

Wyoming: Jack Poll

Kentwood: Stephen Kepley



Sheriff: Michelle LaJoye-Young

- **County Clerk**
- **Drain Commissioner**
- **Prosecuting Attorney**
- **County Treasurer**
- **Part of Michigan's 2nd and 3rd Congressional Districts for State Senators**

(mayor office kent county michigan - Search (bing.com))

Communication

Libraries:

Grand Rapids Public Library

Kent District:

Cascade Township Branch

Wyoming Branch

Plainfield Township Branch

TV Stations

WOOD, WZZM, WXMI, WGVU

Radio Stations

WGRD, WLAV, WFUR, WCSG

Tornado Sirens

Safety & Radio Alerts



Education

Departments of Education: 4
Public School Districts: 27
Public Schools: 265
Private Schools: 57
Colleges/Universities: 13

High School Graduation Rate

▣ 32.8%

Associates Degree

▣ 27.4%

Bachelors Degree or Higher

▣ 33.1%

(<https://scd.datadrivendetroit.org/profiles/06000US>)



[kirkhof college of nursing gvsu - Bing images](#)

Recreation

Parks: 31

Golf Courses: 36

Dog Parks: 5, 1 Indoor

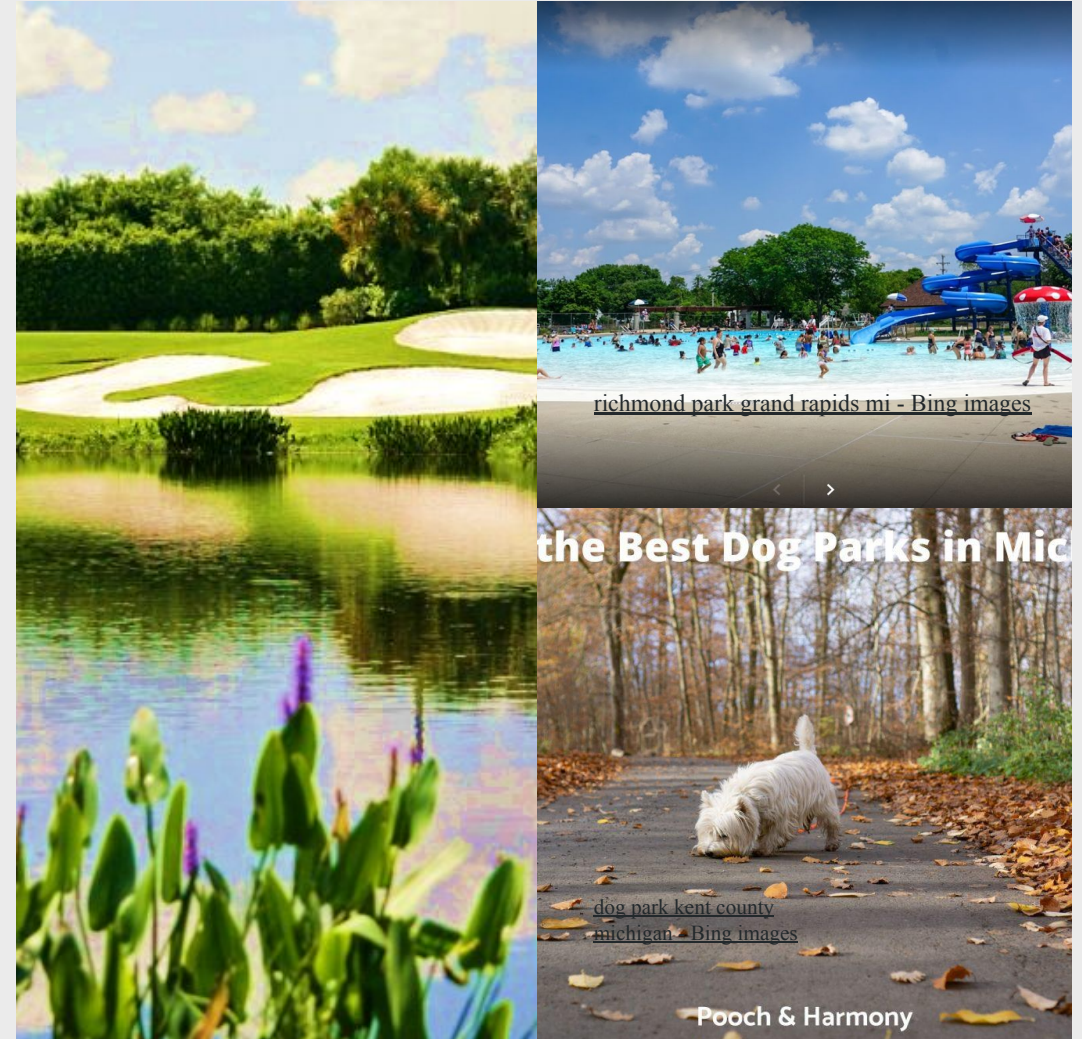
YMCA's: 22

Swimming Pools: 3

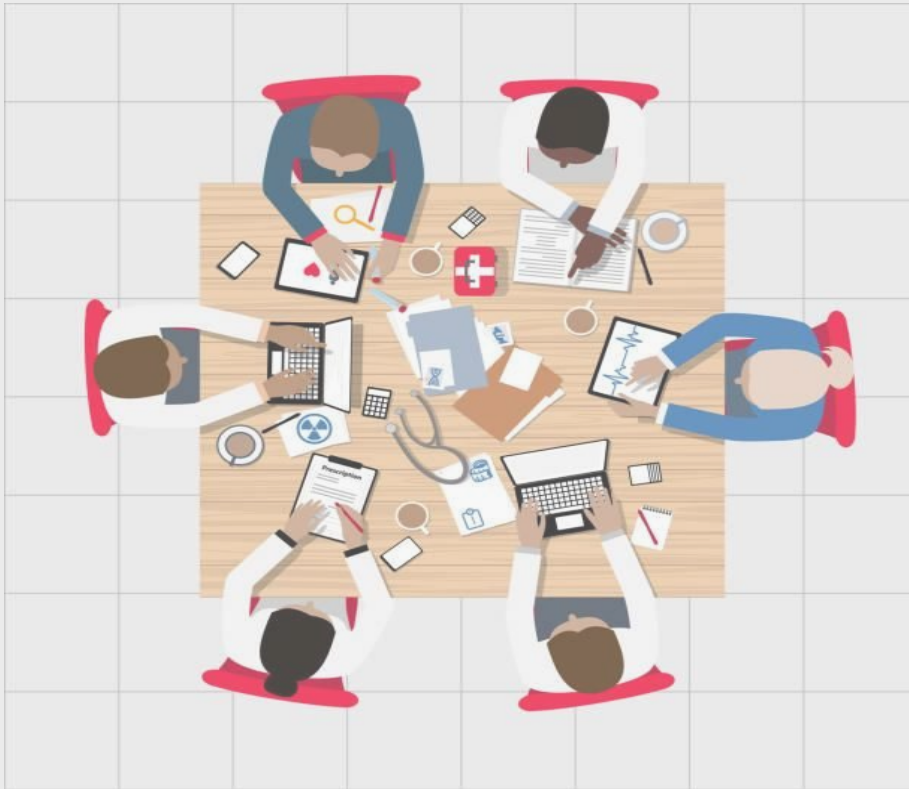
Activities

- ❑ Biking, Hiking, Golf
- ❑ Swimming, Fishing, Tennis
- ❑ Camping, Walking/Trails

(Kent County Parks and Trails, 2021)



KEY INFORMANTS



- Joann Hoganson - KCHD
- Kristen Gildner – Tandem365
- Cathy Armstrong - KCHD
- Marissa Brown - KCHD
- Maddie Hall – KCHD
- Amy Shears – KCHD
- John West - KCHD

(medical meetings clip art - Search (bing.com))

KEY THEMES



- Increase use of preventive medicine in existing EMS system
- Implement use of telemedicine into existing EMS system
- Expand role and scope of practice in current EMS system with use of paramedic practitioner
- Introduce advanced paramedics into primary teams and interprofessional care teams

FIRST



[literature review clip art - Search \(bing.com\)](#)

FIRST LITERATURE REVIEW

Individuals are at risk for oral and dental health complications during pregnancy.

- Adeniyi, A., Donnelly, L., Jevitt, C., Kardeh, B., Von Bergmann, H., & Brondani, M. (2021). Pregnant women's perspectives on integrating preventive oral health in prenatal care. *BMC Pregnancy and Childbirth*, 21(271), 1-10. <http://doi.org/10.1186/s12884-021-03750-4>
- Hemalatha, V. T., Manigandan, T., Sarumathi, T., Aarthi, N., & Amudhan, A. (2013). Dental considerations in pregnancy: A critical review on the oral care. *Journal of Clinical and Diagnostic Research*, 7(5), 948-953. <https://doi.org/10.7860/jcdr/2013/5405.2986>

Osteoporosis poses a significant health problem among older adults.

- Caley, J. A. (2013). Public health impact of osteoporosis. *The Journals of Gerontology*, 68(10), 1243-1251. doi: 10.1093/Gerona/gtl-093
- Gai, Q. Y., Lv, H., Li, Y. P., Fu, Q. M., & Li, P. (2020). Education intervention for older adults with osteoporosis: A systematic review. *Osteoporosis International*, 31, 625-635. doi: 10.1007/s00198-019-05166-5

FIRST LITERATURE REVIEW

Elders are at risk regarding emergency care in the community setting.

Ontengco, J. B. (2019). Increasing referrals to a community paramedicine fall prevention program through implementation of a daily management system. *Journal of Trauma Nursing*, 26(1), 50-57. <https://doi.10.1097/JTN.0000000000000415>

Williams, G. R., & Hestelendy, A. J. (2014). The expanding scope of EMS: Decreasing emergency department overcrowding in the United States. *Journal of Paramedic Practice*, 6(12), 614-618. <https://doi.org/10.12968/jpar.014.6.12.614>

Homeless teens are at risk for health management problems.

Warren, D., Gilmore, J. P., & Wright, C. (2021). Developing an embedded nursing service within a homeless shelter: Client's perspectives. *International Journal of Environmental Research and Public Health*, 18, 1-12 <https://doi.org/10.3390/ijerph18094719>

Rodriguez, J., Applebaum, J., Stephenson-Hunter, C., Tinio, A., & Sharpapiro, A. (2013). Cooking, eating, fitness, and fun (CHEFFs): Qualitative evaluation of a nutritional education program for children living in urban family homeless shelters. *American Journal of Public Health*, 103(S2), S361-S367. <https://doi.org/10.2105/AJPH.2013.301558>

POTENTIAL NURSING DIAGNOSES



At Risk for Impaired Perinatal & Infant Dentition/Oral Health among pregnant women and infants in Kent County related to lack of a perinatal & tiny teeth/infant oral health program at the Kent County Health Department as evidenced by the exclusion of Kent County in the Michigan Initiative for Maternal and Infant Health (MIMIOTT) grant program & pilot study.

At Risk for Impaired Bone Health among women in Kent County related to lack of a community-based bone health program at the Mary Free Bed YMCA & other Kent County YMCA facilities, knowledge deficits, and lack of familiarity with resources.

POTENTIAL NURSING DIAGNOSES



At risk for deficient community health in Kent County among elders in need of emergency home care interventions and emergency transport related to a deficit in community paramedic interprofessional education for primary, secondary, and tertiary preventive care, knowledge deficit, and lack of resources available for referrals.

At risk for ineffective health management among runaway & homeless teens in Kent County related to reported lack of knowledge/life skills, access to health education/exercise programs and lack of familiarity with community resources.

SELECTED NURSING DIAGNOSIS



At Risk for deficient community health in Kent County among elders in need of emergency home care interventions and emergency transport related to deficit of community paramedic interprofessional education for primary, secondary, and tertiary preventive care, knowledge deficit, and lack of resources available for referrals.

HEALTHY PEOPLE 2030 OBJECTIVES



Injury Prevention

- ❑ Reduce fall-related deaths among older adults – **IVP-08**
- ❑ Reduce the proportion of older adults who use inappropriate medications – **DA-02**
- ❑ Reduce the rate of emergency department visits due to falls among older adults – **OA – 03**
- ❑ Reduce fatal injuries – **IVP-01**

(U.S Department of Health and Human Services, 2020)

([healthy people 2030 - Search \(bing.com\)](#))

HEALTHY PEOPLE 2030 OBJECTIVES



Health Communication

- ▣ Increase the health literacy of the population – **HC/HIT-R01**

Community

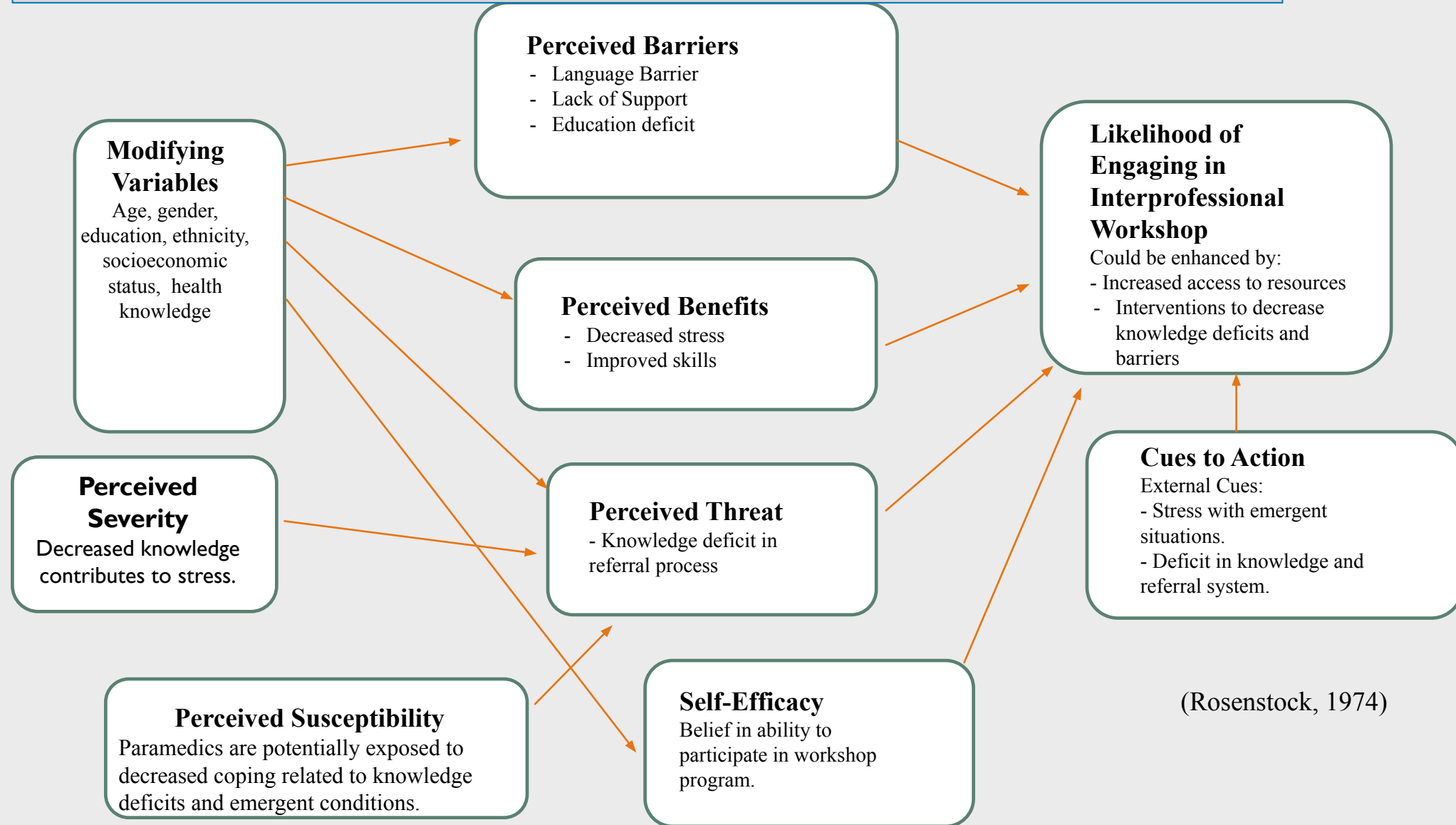
- ▣ Increase the number of community organizations that provide prevention services – **ECBP-D07**

Hospital and Emergency Department Services

- ▣ Reduce emergency visits for nonfatal injuries – **IVP-02**

(U.S Department of Health and Human Services, 2020)

Health Belief Model – Workshop Intervention



SECOND



[literature review clip art - Search \(bing.com\)](#)

SECOND LITERATURE REVIEW

Increase the use of preventive measures in existing EMS System

Davenport, K., Cameron, A., Samson, M., Sri-on, J., & Liu, S. W. (2020). Fall prevention knowledge, attitudes, and behaviors: A survey of emergency providers. *Western Journal of Emergency Medicine*, 21(4), 826-830. <https://doi:105811/westjem.2020.4.43387>

Bjorck, M., & Wijk, H. C. (2018). Is hospitalization necessary? A survey of frail older person with cognitive impairments transferred from nursing homes to the emergency department. *Scandinavian Journal of Caring Sciences*, 32, 1138-1147. <https://doi.1111/scs.12559>

Expand the scope of practice in EMS System

Williams, G. R., & Hestelendy, A. J. (2014). The expanding scope of EMS: Decreasing emergency department overcrowding in the United States. *Journal of Paramedic Practice*, 6(12), 614-618. <https://doi.org/10.12968/jpar.2014.6.12.614>

Muldoon, D., & Seenan, C. (2021). The introduction of advanced paramedics into primary care in Northern Ireland: A qualitative descriptive study of the experiences of general practitioners. *British Paramedic Journal*, 6(3), 1-6. <https://doi.org/10.29045/14784726.2021.12.6.3.1>

SECOND LITERATURE REVIEW

Implement use of telemedicine in existing EMS systems

Stevanovic, A., Beckers, S., Czaplik, M., Bergrath, S., Coburn, M., Brokmann, J. C., Hilgers, R-D., Rossaint, R., & TEMS Collaboration Group. Telemedical support for prehospital emergency medical services (TEMS Trial): Study protocol for a randomized controlled trial. *BioMed Central*, 18(43), 1-6. <https://doi.10.1186/s13063-017-1781-2>

James, H. S. E., Smith, A. C., Thomas, E. E., Snoswell, C. L., Caffery, L. J., & Haydon, H. M. (2021). Exploring paramedics' intention to use a specialist palliative care telehealth service. *Progress in Palliative Care*, 29(2), 106-113. <https://doi.10.1080/09699260.202.1852657>

Introduce advanced paramedics into primary teams/interprofessional activities

Rasku, T., Kaunonen, M., Thyer, E., Paavilainen, E., & Joronen, K. (2019). The core components of community paramedicine – integrated care in primary setting: A scope review. *Scandinavian Journal of Caring Science*, 33, 508-521. <https://doi.10.1111/scs.12659>

Ferreira, P. C., Teston, E. F., Marquete, V. F. de Sousa Santos, R. M., Rossi, R. M., & Marcon, S. S. (2021). Use of urgency and emergency services for acute hypertension and/or diabetes complications. *ESC Anna Nery*, 25(5), 1-9. <https://doi.org/10.1590/2177-9465-EAN-2021-0003>



LIFE EMS - SURPRISES ENCOUNTERED



Capstone Site Selected

- After conducting the literature review and key informant interviews, Group C Students decided the Capstone project would be completed at Life EMS with Tandem365 as an education workshop for staff.

Needs – Lack of

- Preventative measures (Fall risk, Evaluation Tools)
- Referral Information – Kent County
- Increased Scope of Practice: (Telemedicine, Paramedic Practitioner, Primary Care Team Member)

ASSIGNED SITE: LIFE EMS WITH TANDEM365 STAFF

“WE PROVIDE THE HIGHEST LEVEL OF CARE TO OUR PATIENTS, ALONG WITH EXTENSIVE TRAINING AND A SUPPORTIVE WORK ENVIRONMENT FOR ALL OUR ASSOCIATED”

(LIFE EMS AMBULANCE, 2022, PARA. #1).

1275 Cedar Street N.E., Grand Rapids, Michigan



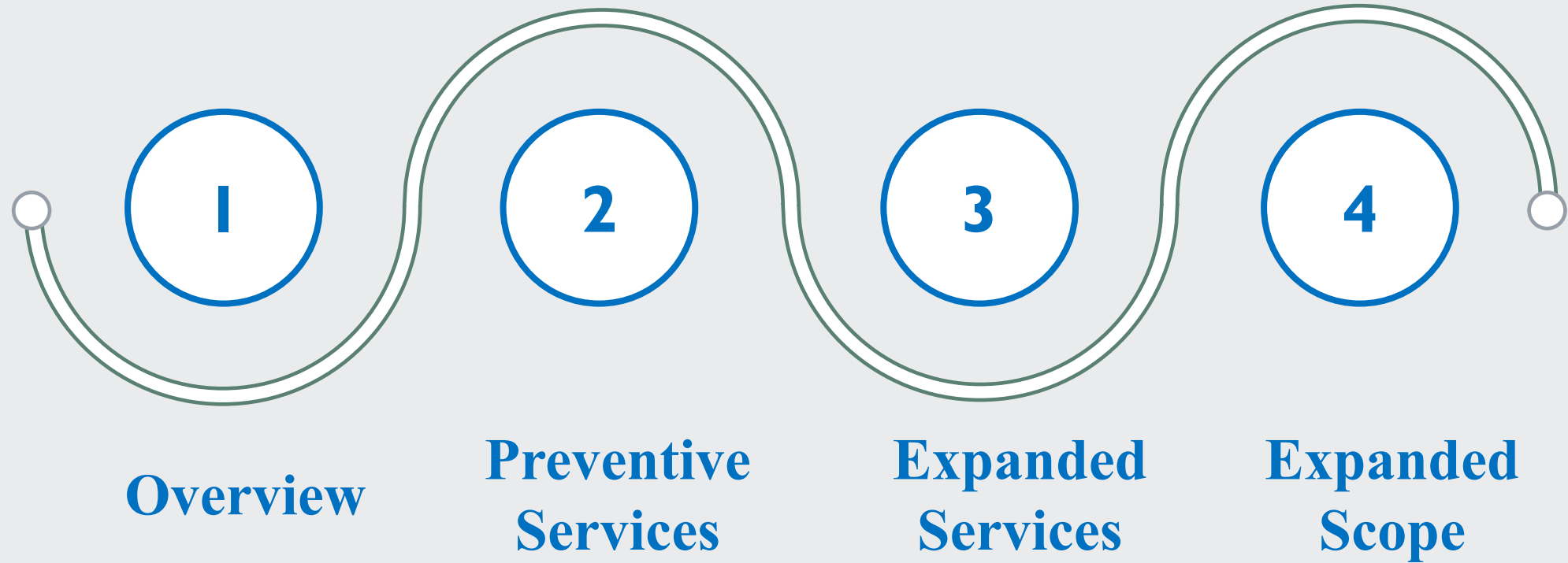
Only Six ICP's Cover Six Counties

TANDEM365
CARE IS BETTER TOGETHER

Life EMS – Covers 527 sq. miles of 847 sq miles in Kent County

Tandem365 Savings to Priority Health - \$350 & Blue Care Network \$388 per month per patient enrolled

IMPROVING EMERGENT CARE WORKSHOP
SEPTEMBER 16, 2022 – LIFE EMS & TANDEM365
10:00 A.M. – 11:00 A.M.



LESSON PLAN



Topic: Interprofessional Educational Workshop – Improving Emergent Care with overview of EMS & interprofessional teams, use of preventive measures/tools, health needs assessment of KCHD, expanded scope of practice for EMS, and referral process updates.

The Behavior Desired: Practice of understanding EMS & interprofessional teams, use of preventive measures/tools, health needs assessment of KCHD, expanded scope of practice for EMS, and referral process updates.

Learning Outcome: Participants will have an increased understanding and knowledge of EMS teamwork, preventive measures/tools, health needs in Kent County, & referral updates.

Capstone Student Skills & Prior Knowledge: Knowledge of public speaking, EMS preventive work, tools, KCHD assessment, and referral systems.

Set-Up

Items Required/Set-Up: Flyers, 2022 Senior Service in KC, Likert scale pre- and post-test printed, brochure.
Five Stations Addressed

Time Required: 65 minutes total

- Orientation Time & Pretest = 10 minutes
- Five Stations = 10 minutes each
- Post-Test = 5 minutes





COST ANALYSIS



Brochures & Handouts

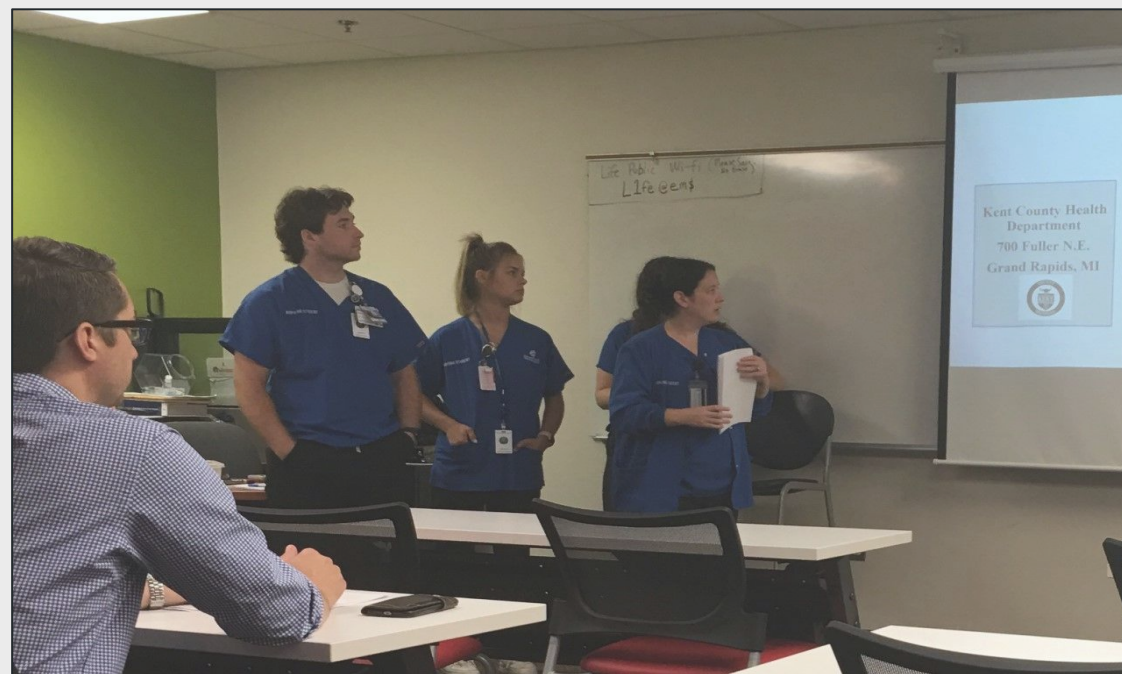
15 – Brochures & Flyers Printed

□ No Cost

15 – Formal Handouts & PPT

□ No Cost

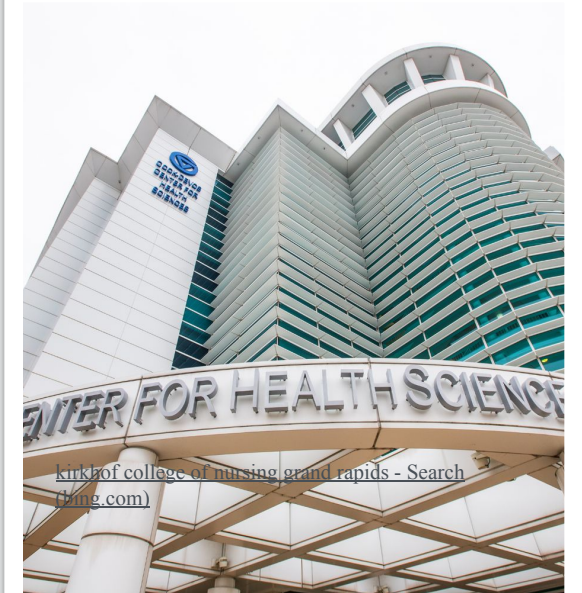
Capstone Presentation





TANDEM365
CARE IS BETTER TOGETHER

[tandem365 grand rapids mi - Search \(bing.com\)](#)



IMPROVING EMERGENT CARE WORKSHOP

Station One: Overview EMS & Interprofessional Teams

Station Two: Use of Preventive Measures, Tools

Station Three: Health Needs Assessment by KCHD

Station Four: Expand Scope of Practice - EMS

Station Five: Referral Process Updates

STATION ONE: OVERVIEW – EMS & INTERPROFESSIONAL TEAMS

Life EMS

- Ambulance Services
- Wheelchair/Mobility Transport
- Standby Event Medical Care
- Tactical Medical Support



[ambulance clip art - Bing images](#)

Tandem365

- Integrated Care Paramedic Visits
- Care Coordinators
- Medication Management
- Mental Health Resources
- RN & Social Worker Navigation
- Telehealth

STATION TWO: PREVENTIVE MEASURE - EMS

Living Environment

Fall Prevention

- ❑ Home Chore (Senior Neighbors)
- ❑ Home Modifications (Disability Advocates of KC)
- ❑ Home Repair
- ❑ Vision Services (Cherry Health)

Safety

- ❑ Emergency Need Fund – One Time Prescription Assistance (Senior Neighbors)
- ❑ Mobility Equipment (Alternative in Motion)
- ❑ Personal Emergency Response System (Elders Helpers)

STATION TWO: PREVENTIVE MEASURE - EMS

Living Environment

Hoarding Concerns (Refer to
Gr Hoarding Taskforce
hoarding@grcity.us)

Hazards of Hoarding

- ❑ Trip & Fall, Fire Hazard
- ❑ Blocked Entrance/Exit
- ❑ Animals-Pests – Poor Health

Hoarding



hoarding - Bing images

STATION TWO: PREVENTIVE MEASURE - EMS

- ❑ Fall Risk Assessment Tool for Home Health Care
- ❑ Fall Risk Assessment Tool (FRAT)
- ❑ Clutter – Hoarding Scale

Johns Hopkins Fall Risk Assessment Tool for Home Health Care

If patient has any of the following conditions, check the box and apply Fall Risk interventions as indicated.

High Fall Risk - Implement High Fall Risk interventions per protocol

- ☐ History of more than one fall within 6 months before admission
- ☐ Patient is deemed high fall-risk per protocol (e.g., seizure precautions)

Low Fall Risk - Implement Low Fall Risk interventions per protocol

- ☐ Complete paralysis or completely immobilized

Do not continue with Fall Risk Score Calculation if any of the above conditions are checked.

FALL RISK SCORE CALCULATION – Select the appropriate option in each category. Add all points to calculate Fall Risk Score. (If no option is selected, score for category is 0)

Points

Age (single-select)

- ☐ 60 - 69 years (1 point)
- ☐ 70 - 79 years (2 points)
- ☐ greater than or equal to 80 years (3 points)

Fall History (single-select)

- ☐ One fall within 6 months before admission (5 points)

Elimination, Bowel and Urine (single-select)

- ☐ Incontinence (2 points)
- ☐ Urgency or frequency (2 points)
- ☐ Urgency/frequency and incontinence (4 points)

Medications: Includes PCA/opiates, anticonvulsants, anti-hypertensives, diuretics, hypnotics, laxatives, sedatives, and psychotropics (single-select)

- ☐ On 1 high fall risk drug (3 points)
- ☐ On 2 or more high fall risk drugs (5 points)
- ☐ Sedated procedure within past 24 hours (7 points)

Patient Care Equipment: Any equipment that tethers patient (e.g., IV infusion, chest tube, indwelling catheter, SCDs, etc.) (single-select)

- ☐ One present (1 point)
- ☐ Two present (2 points)
- ☐ 3 or more present (3 points)

Mobility (multi-select; choose all that apply and add points together)

- ☐ Requires assistance or supervision for mobility, transfer, or ambulation (2 points)
- ☐ Unsteady gait (2 points)
- ☐ Visual or auditory impairment affecting mobility (2 points)

Cognition (multi-select; choose all that apply and add points together)

- ☐ Altered awareness of immediate physical environment (1 point)
- ☐ Impulsive (2 points)
- ☐ Lack of understanding of one's physical and cognitive limitations (4 points)

Total Fall Risk Score (Sum of all points per category)

SCORING: 6-13 Total Points = Moderate Fall Risk, >13 Total Points = High Fall Risk

STATION THREE: 2020 KENT COUNTY COMMUNITY HEALTH NEEDS ASSESSMENT - HEALTH RELATED NEEDS

- Access to Care
- Arthritis
- Chronic Pain
- Diabetes
- Discrimination & Racial Inequity
- Economic Security

- Food & Nutrition
- Housing
- Mental Health
- Obesity
- Stress & Social Support

(Brummel, 2020)

STATION THREE: 2020 KC COMMUNITY HEALTH NEEDS ASSESSMENT - HEALTH RELATED NEED

Diabetes

- “Occurs when the body cannot produce or respond appropriately to insulin, resulting in high blood glucose levels.
- The three major types Type 1, Type 2, and Gestational.
- Type 2 diabetes, adult onset, accounts for 90-95% of all cases”.
- Kent County Trends in prevalence — 8.5%; Michigan 11.7% (Brummel, 2020, p. 60)

- Ninth leading cause of deaths in KC
- Leading cause of preventable hospitalizations
- 15.4% of all preventable hospitalizations in 2018

(Brummel, 2020)

STATION THREE: 2020 KC COMMUNITY HEALTH NEEDS ASSESSMENT - HEALTH RELATED NEED

Mental Health

“Diagnosed depression is more common in Kent County compared to Michigan and the U.S”. (Brummel, 2020, p. 67)

- ❑ KC: 23.7%; Mich. 19.7% - Depression

Opioid Surveillance – Kent County

- ❑ 1/21-3/22 – 103 Accidental Overdoses
- ❑ 2013-2022: over 90% accidental deaths from Heroin, Cocaine, Fentanyl
- ❑ Narcan from Red Project: 2021-2022, Narcan Nasal Kits over 2,000

Social Support – Referrals

Red Project – 401 Hall Street, SE

- ❑ Harm Reduction Model, Syringe & Condom Access, Counselors, Narcan Rescue Kits in Vending Machine, PrEP Services, Recovery Coach, HIV/HCV Testing.

Network 180

- ❑ Crisis and Access Services
- ❑ Recovery & Disability Services
- ❑ Adult, Youth, & Family Services

STATION 4: EXPAND SCOPE OF PRACTICE - EMS

Community Paramedic Model

- ❑ Integrate with public health agency
- ❑ Connect patients to services
- ❑ Provide education/health promotion
- ❑ Integrate with health systems
- ❑ Integrate with home health

(RHIhub, 2020)



STATION 5: REFERRALS & KENT COUNTY HEALTH NEEDS/SERVICES

Kent County Health Department

- ❑ Opioid Surveillance
- ❑ Opioid Task Force
- ❑ Emergency Preparedness

Spectrum

- ❑ Core Health Program (Diabetes, COPD, Cardiac issues)

2020 Senior Service Directory

- ❑ Senior Millage Services for KC

Substance Use Centers

- ❑ The Red Project
- ❑ Network 180
- ❑ Mel Trotter inebriate shelter

Kent County Health Department

- ❑ 2020 Health Needs Assessment

BROCHURE

Six Panel Brochure

Panel 1 – Overview

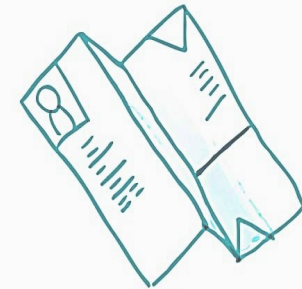
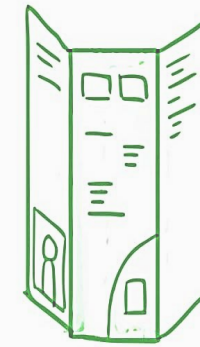
Panel 2 – Preventive Measures

Panel 3 – Health Needs Eval

Panel 4 – Expand Scope

Panel 5 – Referral Updates

Panel 6 – KCON Contribution



[brochure clip art - Search \(bing.com\)](#)

FORMATIVE EVALUATION

Barriers

- ☐ Limited student access to Life EMS – Contract Issues Unresolved
- ☐ Limited access to KCHD staff 2022 Winter – COVID-19.
- ☐ Limited Staff available at Life EMS – Friday presentation

What changes were made as the project was implemented?

- ☐ Revised plan to educate Tandem365 staff rather than paramedic students due to legal contract issues.
- ☐ No need for Spanish flyers & brochures.
- ☐ KCHD staff interactions occurred only in the fall 2022 rather than winter & fall 2022 – COVID-19.

FORMATIVE EVALUATION

Communication Methods

- PowerPoint, Brochure, Flyers, Handouts from KCHD needs assessment.

Content Modification

- Utilized the Faces Likert Scale for pre-test and post-test, no need for Spanish interpreter.

Resources

- Required use of masks for unvaccinated individuals in attendance per Life EMS policy, hand sanitizer at Tandem365.

SUMMATIVE EVALUATION

To Measure Objectives

Faces Handout Questionnaire

Pre and Post Test placed in anonymous envelope before and after Workshop

Administration Participants – 3
(Tested)

Tandem365 Staff – 15 (Not tested)

Life EMS Staff - Future
Paramedic Classes

Pre-Test = Completed before the
Workshop.

Post-Test = Complete out after the
Workshop.

Please circle the number above the
face for the answer for each question.



SUMMATIVE EVALUATION



1. I understand how to assess the living environment with fall risk tools/hoarding and how to refer for repairs and hoarding in Kent County.

1 2 3 4 5

2. I am educated about the 2020 KC Community Health Needs Assessment and how it pertains to Life EMS and Tandem365 role.

1 2 3 4 5

3. I am educated about Spectrum's Core Health Program and how it impacts chronic & potential emergent health needs.

1 2 3 4 5

4. I understand the proposed expanded scope of practice for EMS personnel.

1 2 3 4 5

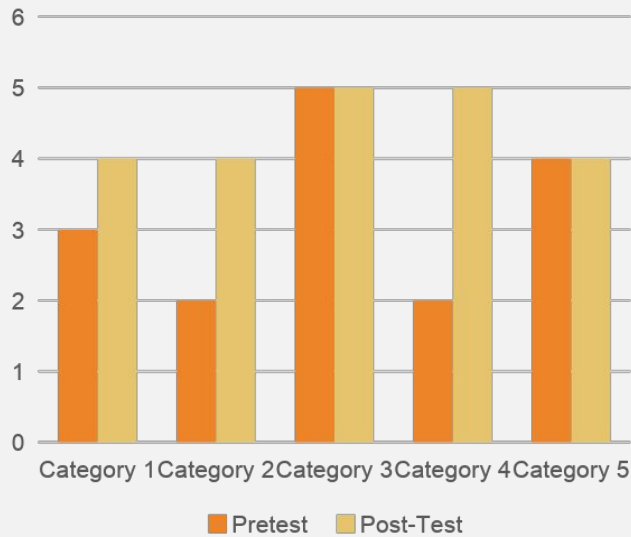
5. I am educated with the use of the 2022 Kent County Senior Services/Millage Referral Document.

1 2 3 4 5

SUMMATIVE EVALUATION

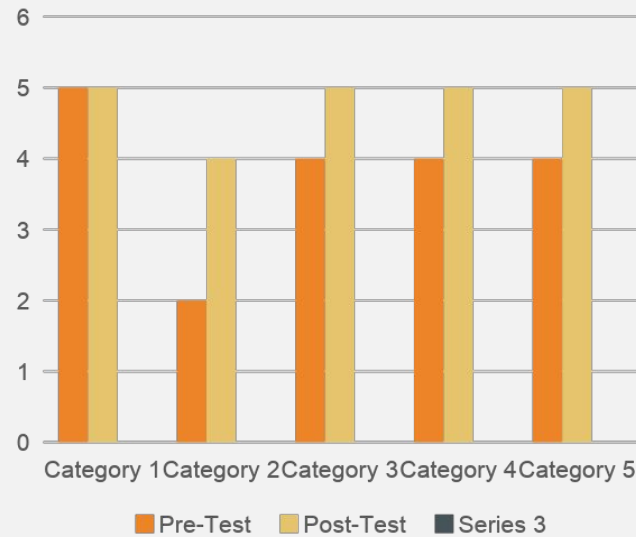
Improved Categories:

1, 2, & 3
Participant 1



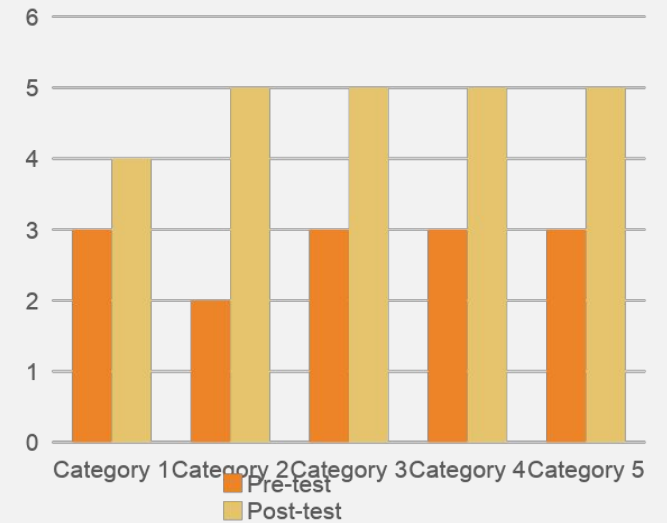
Improved Categories:

2, 3, 4, & 5
Participant 2



Improved Categories:

1, 2, 3, 4, & 5
Participant 3



SUMMATIVE: BEHAVIOR CHANGES & HP GOALS

Outcomes Met – Behavior Changes

- Education – Preventive measures and tools among Tandem 356 staff and Life EMS management with changes & understanding.
- Prevention – Preventive measures for Life EMS manager & Tandem365 staff with changes & understanding.
- Referral Process – Referral process now in beginning process for program with Life EMS and Tandem365

Healthy People 2030 Selected Goals – Moved Closer to Goals

- Increase the number of community organization that provide prevention services – **ECBP-D07**
- Reduce the rate of emergency department visits due to falls among older adults – **OA – 03**
- Reduce emergency visits for nonfatal injuries – **IVP-02**

PROFESSIONAL ISSUES:



Accountability

- Engaged in teamwork for development of educational program at Life EMS & Tandem365.

Collaboration

- Collaborated with Life EMS, KCHD & Tandem365 staff regarding preventive tools/measures, referral processes, and KCHD Needs Assessment 2022.

Advocacy

- Forwarded handouts and PowerPoint with information to managers/leaders at KCHD & Life EMS regarding project.

LEGAL ISSUES



HIPAA Privacy Acts/Confidentiality

- ❑ Maintained privacy and security of KCHD, Tandem365, & Life EMS information.
- ❑ Conducted pre-test, and post-test in an anonymous and professional manner.

Copyright

- ❑ Acknowledged the original sources of material used in PPT.

Scope of Nursing Practice

- ❑ Acted within the Nursing Scope of Practice & KCHD directives

ETHICAL ISSUES



Justice

- ▣ Provided education for use among elders & vulnerable populations.

Autonomy

- ▣ Empowered Tandem365 and Life EMS staff members to understand current referral process in Kent County, 2020 KCHD Health Needs Assessment, & preventive measures/tools .

Beneficence

- ▣ Developed workshop to decrease barriers among paramedic students & benefit for use of materials to assist vulnerable populations.

Hardcopy Binders

- ❑ Developed for use at the KCHD and Life EMS/Tandem365.

Brochure and Flyer

- ❑ Created for use at KCHD and Life EMS & Tandem365.

Relevant Topic

- ❑ Selected relevant topic for future use among Life EMS and Tandem365 classes.



Questions



TANDEM365
CARE IS BETTER TOGETHER



THANK YOU

Presenters:

Emily Farkas, Mia Fedon,
Ashley Komosinski,
Marty O'Neill, Anna Preuss,
Kaitlyn Rompala,
Rebecca Rouwhorst,
& Jalen Van Dyke

[kirkhof college of nursing gvsu - Bing images](#)



REFERENCES

- Adeniyi, A., Donnelly, L., Jevitt, C., Kardeh, B., Von Bergmann, H., & Brondani, M. (2021). Pregnant women's perspectives on integrating preventive oral health in prenatal care. *BMC Pregnancy and Childbirth*, 21(271), 1-10. <http://doi.org/10.1186/s12884-021-03750-4>
- Aspinall, E. J., Nambiar, D., Goldberg, D. J., Hickman, M., Weir, A., Van Velzen, E., Palmateer, N., Doyle, J. S., Hellard, M. J., & Hutchinson, S. J. (2014). Are needle and syringe programmes associated with a reduction in HIV transmission among people who inject drugs. *International Journal of Epidemiology*, 43(1), 235-248. doi: 10.1093/ije/dyt243
- Bassetti, S., & Battegay, M. (2004). Staphylococcus aureus infections in injection drug users: Risk factors and prevention strategies. *Infection*, 32(2), 163-169. <https://doi.org/10.1007/s15010-004-3106-0>
- BestPlaces. (2019). Health in Kent County, Michigan. <https://www.bestplaces.net/health/county/michigan/kent>
- Caley, J. A. (2013). Public health impact of osteoporosis. *The Journal of Gerontology*, 68(10), 1243-1251. doi: 10.1093/Gerona/gtl093
- Chadwick, K., & Adams, N. (2021). Challenges of managing drug injection-induced wounds in the community. *Journal of Community Nursing*, 35(4), 42-45.
- City of Grand Rapids. (2012). *Grand Rapids Police Department*. <https://www.grandrapidsmi.gov/government/department/Police.Department>
- City of Grand Rapids. (2021). *My Neighborhood*. <https://www.grandrapids.gov/Residents/my-neighborhood>
- Community Research Institute. (2002-2020). Kent County. <https://www.cridata.org/GeoProfile.aspx?type=31&loc=2634000031035>
- Coull, A. F., Atherton, I., Taylor, A., & Watterson, A. E. (2014). Prevalence of skin problems and leg ulceration in a sample of young injecting drug users. *Harm Reduction Journal*, 11, 1-9. <https://doi.org/10.1186/1477-7517-11-22>

REFERENCES

- County Health Rankings & Roadmaps. (2021). *Michigan*. <http://www.countyhealthrankings.org>
- Data USA. (2021). Kent County, Michigan. <https://datausa.io/profile/geo/kent-county-mi/>
- Environmental Protection Agency. (2019). National air toxics assessment. BestPlaces.net
- Fisher, H., Kesten, J., Hussey, D., Lord, C., Roberts, L., Bayliss, J., Erswell, H., Preston, A., Telfer, M., Scott, J., Harris, M., Mellon, D., Hickman, M., & MacArthur, G. (2022). Using the person-based approach to develop a tailored intervention to prevent bacterial skin and soft tissue infections among people who inject drugs: A participatory study. *Research Square*, 1-25. <https://doi.org/10.21203/rs.3.rs-1336452/v1>
- Fernandez, R. M., Cary, M., Duarte, G., Jesus, G., Alarcao, J., Torre, C., Costa, S., Costa, J., & Vaz Carneiro, A. (2017). Effectiveness of needle syringe programmes in people who inject drugs: An overview of systematic reviews. *BMC Public Health*, 17(309), 1-15.
<https://doi.org/10.1186/s12889-017-4210-2>
- Gai, Q. Y., Lv, H., Li, Y. P., Fu, Q. M., & Li, P. (2020). Education intervention for older adults with osteoporosis: A systematic review. *Osteoporosis International*, 31, 625-635. doi: 10.1007/s00198-019-05166-5
- Hagan, H., Pouget, E. R., & Des Jarlais, D. C. (2011). A systematic review and meta-analysis of interventions to prevent Hepatitis C virus infection in people who inject drugs. *Journal of Infectious Disease*, 204(1), 74-83. doi:10.1093/infdis/jir196
- Health Department Kent County Michigan. (2021). About the Kent County Health Department. <https://www.accesskent.com/Health/>
- Health Equity Index of GRAAHI. (2021). Disparities. <https://hei.graahi.org/>
- Hemalatha, V. T., Manigandan, T., Sarumathi, T., Aarthi, N., & Amudhan, A. (2013). Dental considerations in pregnancy: A critical review on the oral care. *Journal of Clinical and Diagnostic Research*, 7(5), 948-953. <https://doi.org/10.7860/jcdr/2013/5405.2986>

REFERENCES

- Hernandez, E., & Carlson, N. (2019). *Kent County congregational study, 2007*. doi: 10.1760510SF.1015G7DM
- Huyck, M. A., Messmer, S., Mayer, S. m., & Yingling, C. (2021). Intrawound injection of heroin as a drug delivery route among a cohort of people who inject drugs. *Health Sciences Report*, 4(1), 1-3. <https://doi.org/10.1002/hsr2.231>
- Kent County MI. (2021). Data and peer group rankings. <https://Michigan.hometownlocator.com/mi/kent>
- Kent County Michigan. (2021). *Violent crime rates and maps*. <https://crimegrade.org/violent-crime-kent-county-mi/>
- Kent County Park and Trails. (2021). *Kent County parks brochure*. <https://kentcountyparks.org>
- Life Expectancy by State. (2021). *Michigan*. <https://worldpopulationreview.com/state-rankings/life-expectancy-by-state>
- Mack, J. (2019). Look up religious profile of your Michigan county.
<http://www.mlive.com/news/Kalamazoo/2015/11/look-up-the-religious-profile.html>
- Mack, J. (2019). Which are the most- and least- healthiest communities in Michigan?
<https://www.mlive.com/news/g661-2019/03/7373b384367976>
- Martin, N. K., Hickman, M., Hutchinson, S. J., Goldberg, D. J., & Vickerman, P. (2013). Combination interventions to prevent HCV transmission among people who inject drugs: Modeling the impact of antiviral treatment, needles, and syringe programs, and opiate substitution therapy. *Clinical Infectious Diseases*, 57(S2), S39-S45. <https://doi.org/10.1093/cid/cit296>

REFERENCES

- Moradi-Joo, M., Ghiasvand, H., Noroozi, M., Armoon, B., Noroozi, A., Karimy, M., Rostami, A., Mirazee, M. S., & Hermmat, M. (2019). Prevalence of skin and soft tissue infections and its related high-risk behaviors among people who inject drugs: A systematic review and meta-analysis. *Journal of Substance Use*, 24(4), 350-360. <https://doi.org/10.1080/14659891/2019.1572805>
- Roelofs, T. (2022). Rise in violent crime plagues some Michigan metros this summer. *Bridge Michigan*.
<https://www.bridgemi.com/urban-affairs/rise-violent-crime-plagues-some-Michigan-metros-summer>
- Spectrum Health (2019). *Connected to our communities*. <https://www.spectrumhealth.org/healthier-communities>
- Spectrum Health (2019-2020). Spectrum Health Grand Rapids community health needs assessment.
<https://www.spectrumhealth.org/locations/spectrum-health-hospitals-butterworth-hospital/community-health-needs-assessment>
- United States Bureau of Labor Statistics. (2022). Unemployment rate in Kent County. <https://fred.stlouisfed.org/series/MIKENT1URN>
- United States Census Bureau. (2019). American community survey 2014-2018 5-year estimates.
<https://www.census.gov/newsroom/press-releases/2019/acs-5-year.html>

REFERENCES

United State Department of Health and Human Services. (2020). Health People 2030. <https://health.gov/healthpeople>

Vlahov, D., & Junge, B. (1998). The role of needle exchange programs in HIV prevention. *Public Health Report*, 113(1), 75-80.

<https://www.ncbi.nlm.nih.gov/pmc/articles/PMC/307729/>

Warren, D., Gilmore, J. P., & Wright, C. (2021). Developing an embedded nursing service within a homeless shelter: Client's perspectives. *International Journal of Environmental Research and Public Health*, 18, 1-12 <https://doi.org/10.3390/ijerph18094719>