

10-2011

## Librarians on the Move: Embedded Librarians

Linda Masselink

*Grand Valley State University*, [masselil@gvsu.edu](mailto:masselil@gvsu.edu)

Anne Merkle MSL

*Grand Valley State University*, [merklea@gvsu.edu](mailto:merklea@gvsu.edu)

Rita Kohrman

*Grand Valley State University*, [kohrmanr@gvsu.edu](mailto:kohrmanr@gvsu.edu)

Follow this and additional works at: [http://scholarworks.gvsu.edu/library\\_presentations](http://scholarworks.gvsu.edu/library_presentations)

 Part of the [Library and Information Science Commons](#)

---

### Recommended Citation

Masselink, Linda; Merkle, Anne MSL; and Kohrman, Rita, "Librarians on the Move: Embedded Librarians" (2011). *Presentations*. 17.  
[http://scholarworks.gvsu.edu/library\\_presentations/17](http://scholarworks.gvsu.edu/library_presentations/17)

This Article is brought to you for free and open access by the University Libraries at ScholarWorks@GVSU. It has been accepted for inclusion in Presentations by an authorized administrator of ScholarWorks@GVSU. For more information, please contact [scholarworks@gvsu.edu](mailto:scholarworks@gvsu.edu).

# Librarians on the Move: Embedded Librarians

Linda Masselink, Anne Merkle, Rita Kohrman

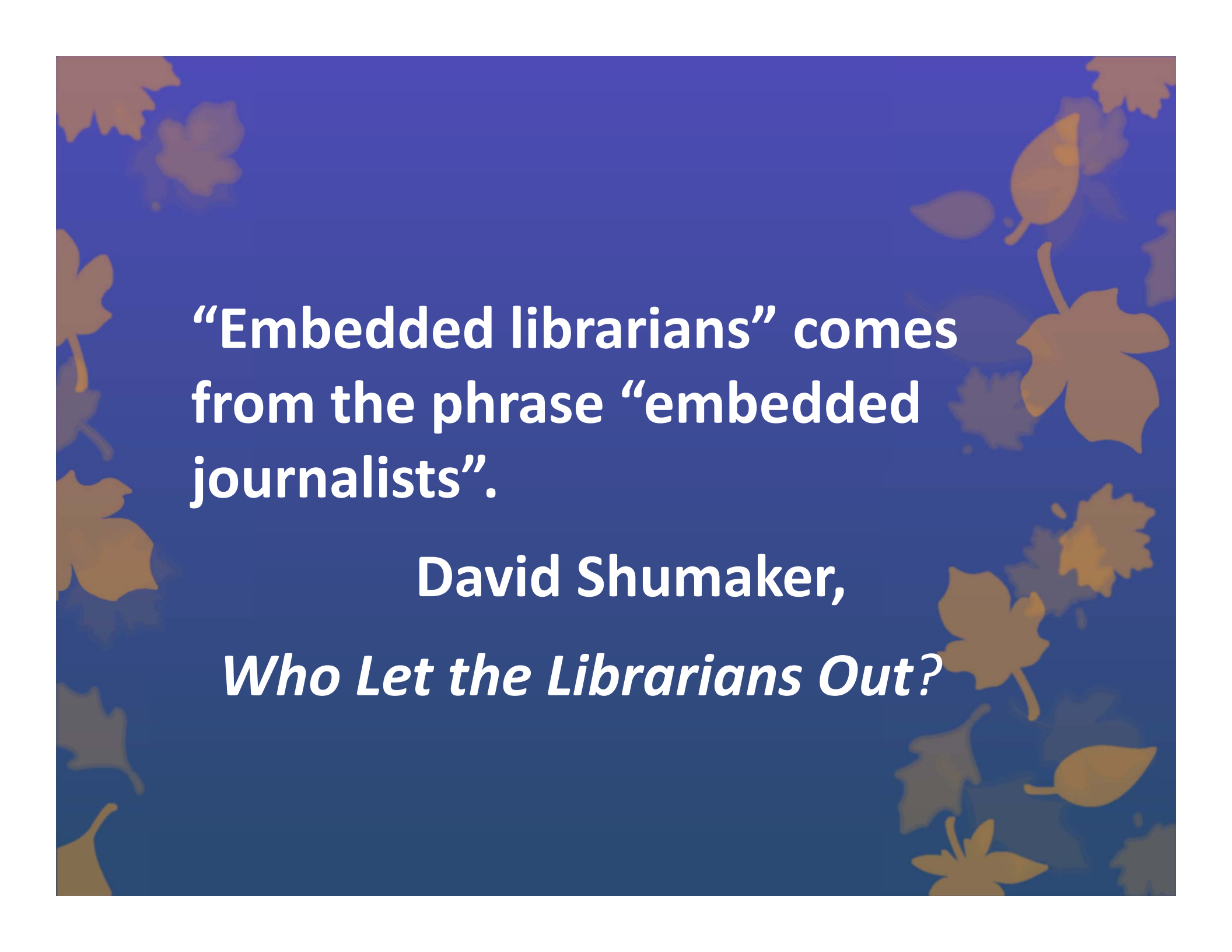
Grand Valley State University Libraries

Michigan Library Association Annual Conference

October 26, 2011



**GRAND VALLEY**  
**STATE UNIVERSITY**  
UNIVERSITY LIBRARIES

The background is a solid blue color with scattered, semi-transparent brown leaf silhouettes of various shapes and sizes, some overlapping each other.

**“Embedded librarians” comes from the phrase “embedded journalists”.**

**David Shumaker,**

***Who Let the Librarians Out?***



A word cloud of terms related to library and educational services. The words are arranged in a roughly rectangular shape, with varying sizes and orientations. The colors are primarily blue and teal. The terms include:

- research rescue
- roving office
- library guides
- course management system
- virtual
- online discussion
- community events
- virtual office
- iPhone app
- research partner
- programmatic-based
- project-based
- webinars
- outreach
- classroom
- co-teaching
- information literacy integration

# How do we define it?

Providing library expertise  
outside the library

# How did we start?

- BlackBoard
- Videos online with Off-Campus Library Services
- A Dark and Stormy Night\*

\* Madeleine L'Engle and Snoopy

The background is a solid blue color with a pattern of brown, stylized leaves scattered across it. The leaves vary in shape and size, some resembling maple leaves and others more like simple ovals. The text is centered in the middle of the page.

# Networking and Supporting

# Lights! Camera! Action!

- [Telepresence](#)
- [How to be a Super Searcher](#)
- [Slideshare.net/gvsulib](http://Slideshare.net/gvsulib)



# Real Life For Students, Faculty & Librarians

**Allendale**

21.21  
Miles

15.40  
Miles

**Holland**

**Grand  
Rapids**

28.60  
Miles

# Why do we need embedded librarians?

- Develop better relationships
- Build better connections with students
- Increase visibility to faculty and students

and...

# Send a Message

- Highlight impact/value of librarians
- Promote library services
- Promote library resources
- Deliver customized service

and....

# Students

- Increase student comfort level
- Contribute to the mission of higher education /college experience

# Best Practices for Getting Started

- Get support from administration; departments, other librarians
- Meet with Department Chairs
- Investigate best times for service

# Publicize, Publicize, Publicize

- Contact faculty
- Provide your contact information
- Locate an area
- Essential: strong wireless signal

# Best Practices for Success

- Introduce yourself
- Encourage faculty to direct students to you
- Try an online presence
- Be consistent
- Keep statistics
- Don't be discouraged

# Impact/Challenges

- Workload considerations
- Inconvenience
- Reporting/Assessment
- Accounting of time
- Conflict of loyalty
- Commitment to a service model

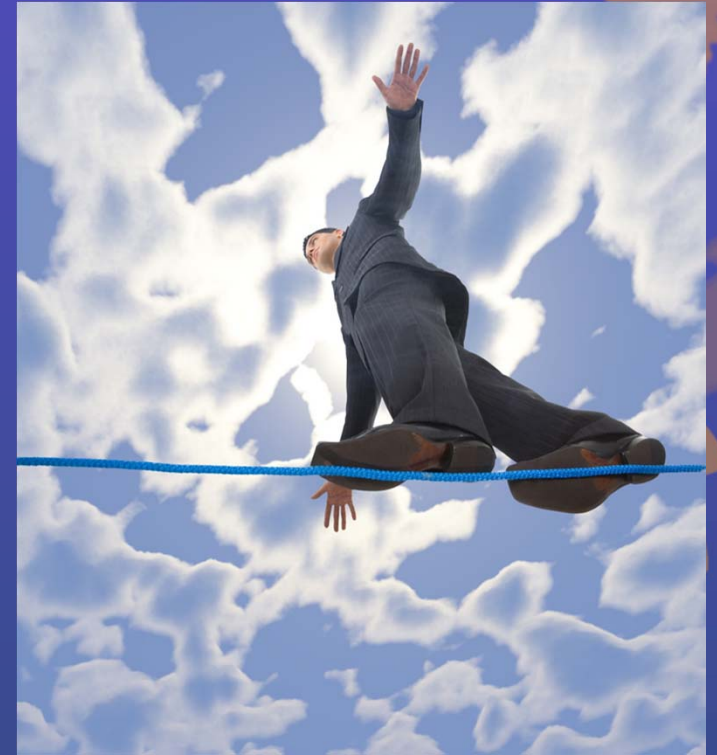


# Resources that helped us


- Bartnik, L. et al (2010). We will be assimilated: Five experiences in embedded librarianship.
- Kvenlid, C., & Calkins, K. (Eds.). (2011). *Embedded librarians: Moving beyond one-shot instruction*.
- Strothmann, M., & Antgell, K. (2010). The live-in librarian: Developing library outreach to university residence halls.

[Annotated Bibliography](#)

**Take the risk!**



**Step outside your  
comfort zone!**

- 
- Linda Masselink, Liaison Librarian for Seidman College of Business  
masselil@gvsu.edu
  - Anne Merkle, Liaison Librarian for Sociology, Honors and the Juvenile Collection  
merklea@gvsu.edu
  - Rita Kohrman, Liaison Librarian for the College of Education  
kohrmanr@gvsu.edu